



# THE EIGHTY-FIRST AUSTRALIAN UNIVERSITIES

## BOAT RACE AND ROWING CHAMPIONSHIPS

LAKE WENDOUREE, BALLARAT

MAY 14 AND 15, 1976

### OFFICIALS

BOAT RACE OFFICIALS V.R.A. NOMINEES  
COMMENTATOR MR. ROGER WILSON  
INTER-VARSITY CONVENOR SIMON TULLOH

### LA TROBE UNIVERSITY ROWING CLUB

PRESIDENT	JOHN FREARSON
CAPTAIN	PETER ATKINSON
VICE-CAPTAIN	MARGARET LONG
SECRETARY	CAROLINE COTTMAN
TREASURER	ATHOL WHITE

### UNIVERSITY IDENTIFICATION

ADELAIDE	WHITE, BLACK 'V', CREST
A.N.U.	WHITE, BLUE HORIZONTAL BAND
FLINDERS	DARK BLUE, WHITE, PALE BLUE
LA TROBE	RED, WHITE INSIGNIA
MACQUARIE	GREEN, WHITE
MELBOURNE	WHITE, CREST
MONASH	SAGE BLUE
N.S.W.	BLACK, CREST
QUEENSLAND	MAROON, CREST
SYDNEY	WHITE, BLUE TIE AND CREST
TASMANIA	GOLD, RED TRIM
WESTERN AUSTRALIA	DARK GREEN, YELLOW TRIM AND BADGE

EIGHTY-FIRST AUSTRALIAN UNIVERSITIES  
BOAT RACE FOR THE OXFORD AND CAMBRIDGE CUP



*Current holders Melbourne University*



*Bow B.W. Longden  
2 M.J. Nolan  
3 M.C. Ross  
4 H.J.M. Lowe  
5 R.P. Widmer  
6 D.R. English  
7 T.H. Horkings  
Stroke S. Swaney  
Cox P.J. Howan  
Coach W. Stokes*

*University of Tasmania*

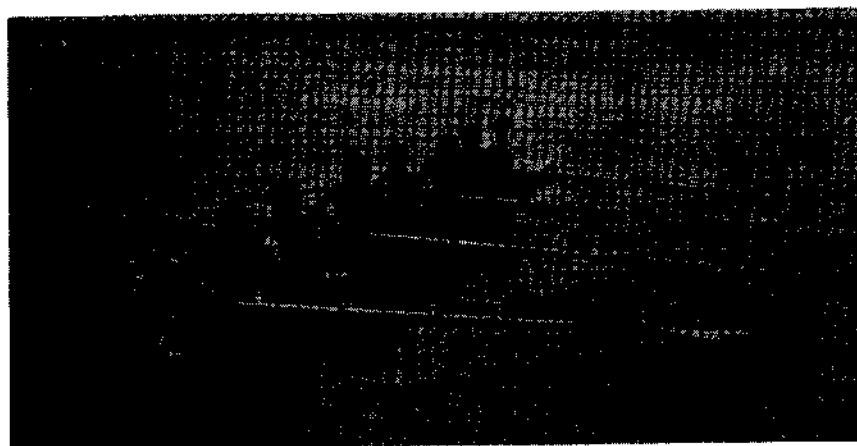
*Bow Paul Kitto  
2 Ian Guest  
3 David McCarthy  
4 Tim Saul  
5 Peter Dazeley  
6 Richard Norton  
7 Doug Buchanan  
Stroke David Downie  
Cox Mark Smithies  
Coach J.G. Turner*



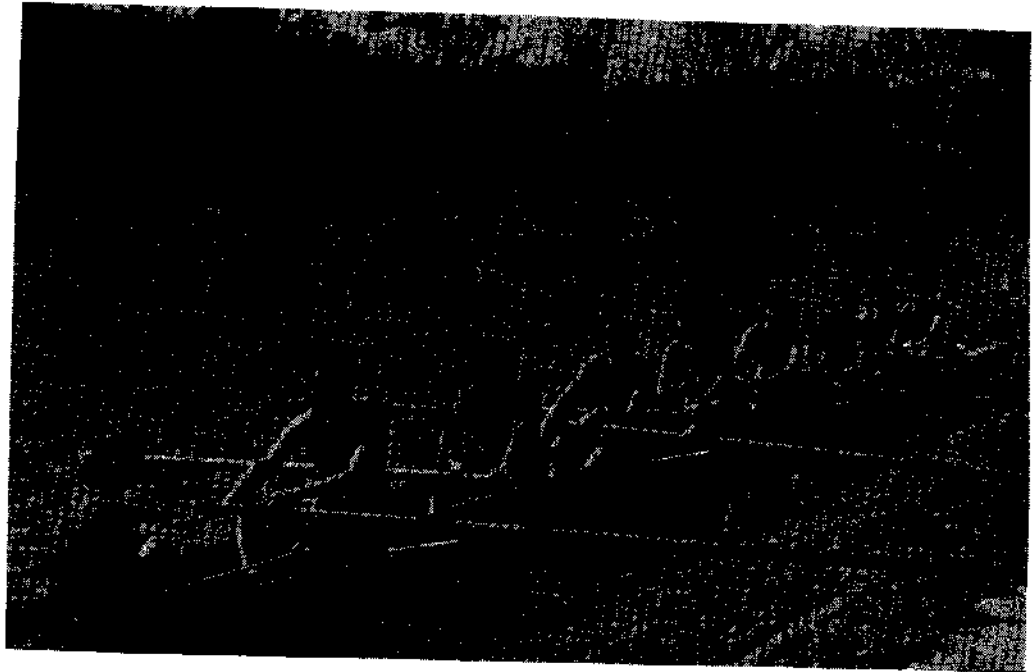
*Australian National University*

Bow	Damian Pethica	13-0
2	Phil Lansdown	12-3
3	Tony Burkitt	13-2
4	Richard Carey	12-4
5	Jeremy Wurm	13-0
6	Rob de Fegely	13-4
7	David Stegman	12-8
Stroke	Hugh Watson	13-0
Cox	Alistair Walton	9-0
Coach	Perry Nolan	

*University of  
Western Australia*



Bow	John Harris
2	Neil Campbell
3	Bruce Robinson
4	Bob Prior
5	Peter Woodland
6	Peter Bairstowe
7	Rob Mc Comb
Stroke	Andrew Bainbridge
Cox	John Mort
Coach	Paul Cox



*La Trobe University*

Bow Tom Mullins  
2 John Rolland  
3 Hans Benzing  
4 Andrew Stewart  
5 Jahn Cramer  
6 Mike Smith  
7 Paul Graham  
Stroke Peter Atkinson  
Cox Peter Aldridge

*Sydney University*

Bow M. Cooke  
2 B. Lynch  
3 P. Winkworth  
4 P. Waight  
5 S. Newnham  
6 A. Anismoff  
7 G. Lemon  
Stroke J. Dwyer  
Cox T. O'Hanlan  
Coach J.StV. Welch

*Adelaide University*

Bow J.W. Bolt  
2 C.W. Lott  
3 F.G. Quigley  
4 T. Willoughby  
5 A.D. Donald  
6 D.D. Hatcher  
7 G.W. Duncan  
Stroke R.J. Lang  
Cox J.W. Lemon  
Coach R.F. Elleway



## LIGHTWEIGHT FOURS CHAMPIONSHIP

FOR THE SIR FRED J. SCHONNEL CUP



*Current holder*

*Melbourne  
University*

*Bow F. Saccard  
2 N. Robinso  
3 J. McGrath  
Stroke N. O'Brya  
Cox R.N. Brown  
Coach H. Nichols*

### *Flinders University*

*Bow Doug Fotheringham  
2 David Blue  
3 Duncan Craick  
Stroke John Wells  
Cox Mark Wicken*

### *Adelaide University*

*Bow J.C. Kernot  
2 G.P. McNeil  
3 G.J. Maddern  
Stroke A.O. Beal  
Cox J.M. Ferris  
Coach M.R. Magarey*

### *MacQuarie University*

*Bow S. Collins  
2 I. Robinson  
3 G. Robinson  
Stroke R. Hodginson  
Cox J. Mundine  
Reserves P. Bendall  
M. Redd*

### *University of Tasmania*

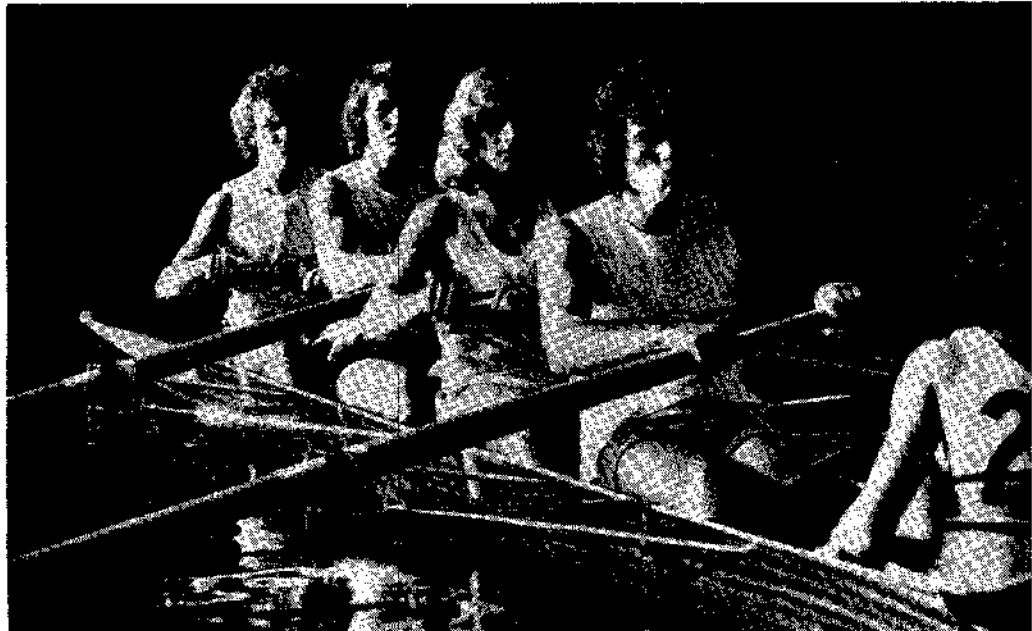
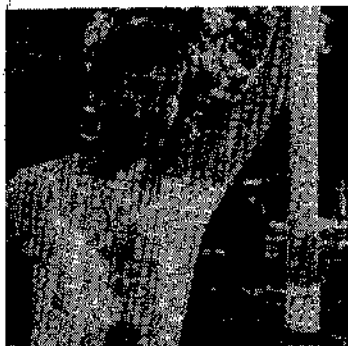
*Bow James Roberts-Thomps  
2 Barry Sproal  
3 Warren Moore  
Stroke Alistair Lewis  
Cox Scott Hannah  
Coach H. Denny*





*Australian National  
University*

*Bow Joe Wolfe  
2 Nick Gellie  
3 Chris Shrosbree  
Stroke Geoff Hindson  
Cox Alistair Walton  
Coach Dave Bagnall*



*Melbourne University*

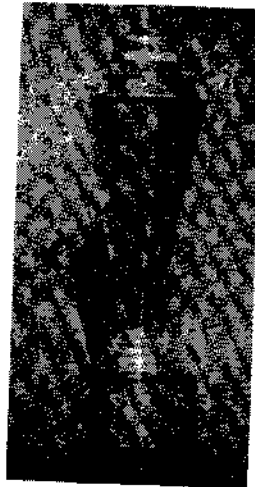
*Bow P. Van Veenendaal  
2 P. Antonie  
3 S. Gillett  
Stroke G. Rees  
Cox T. Mc Coy  
Coach C. Smith*





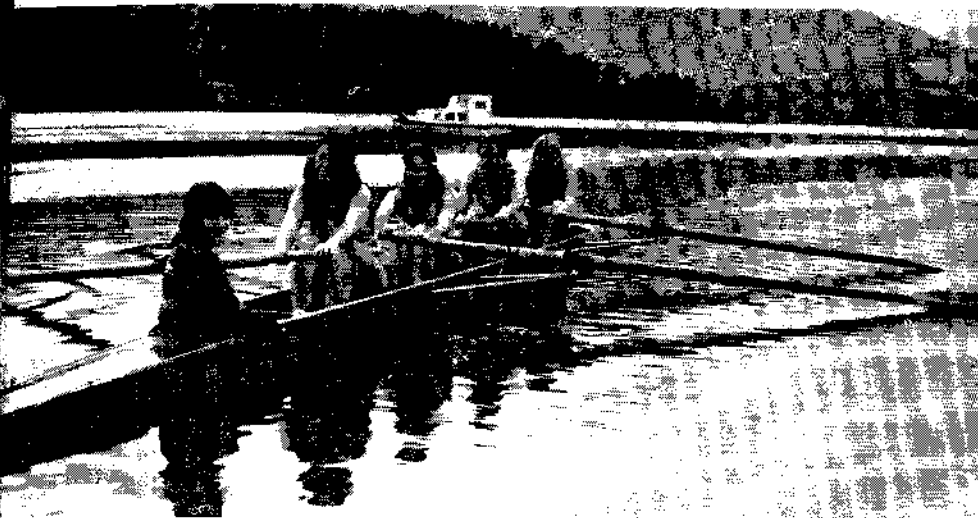
*Monash  
University*

*Bow A. Guerin  
2 R. Richardson  
3 M. Owen  
Stroke C. Low  
Cox A. Bowick  
Coaches J.E. Bourke  
D. Palfreyman*



*The Schonneel Cup*

## LADY MARGARET CUP FOR COXED FOURS



Current holders  
University of  
Tasmania

Bow	J. Lewis
2	U. Stanny
3	R. Foster
Stroke	S. McGinis
Cox	M. Brophy
Coach	K. Braslin

Sydney University



Bow	L. Cottee
2	P. Kahl
3	M. Revington
Stroke	E. Mackie
Cox	C. Bain
Coach	M. McKenzie

Eleanor Mackie	Pauline Kahl	Christine Bain
Maureen Revington	Lisa Cottee	

*Adelaide University*

Bow Angela Cotton  
2 Trish Cameron  
3 Sue Nairne  
Stroke Dale Henrich  
Cox Gabrielle Kinnane  
Coach Peter Emery  
Reserve Barbara Henrich

*Monash University*

Bow Angela Hill  
2 Jenny Morgan  
3 Jo Rilly  
Stroke Ros Barnard  
Cox Kerry Howard

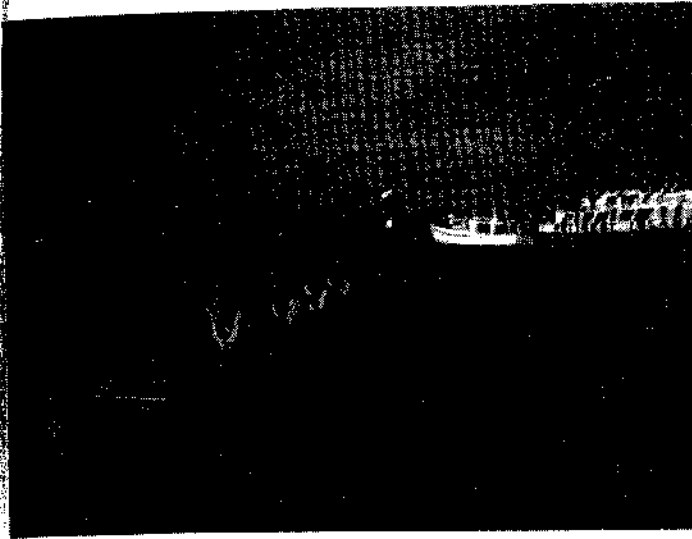
*Flinders University*

Bow Kim Labuen  
2 Maggie Clark  
3 Veronica Bagshaw  
Stroke Patricia Sukett  
Cox Doreen Shepard

*University of Tasmania*

Bow Elizabeth Miller  
2 Catherine Gunter  
3 Jo Laneman  
Stroke Jan Lewis  
Cox Rosemary Bird  
Coach David Schier

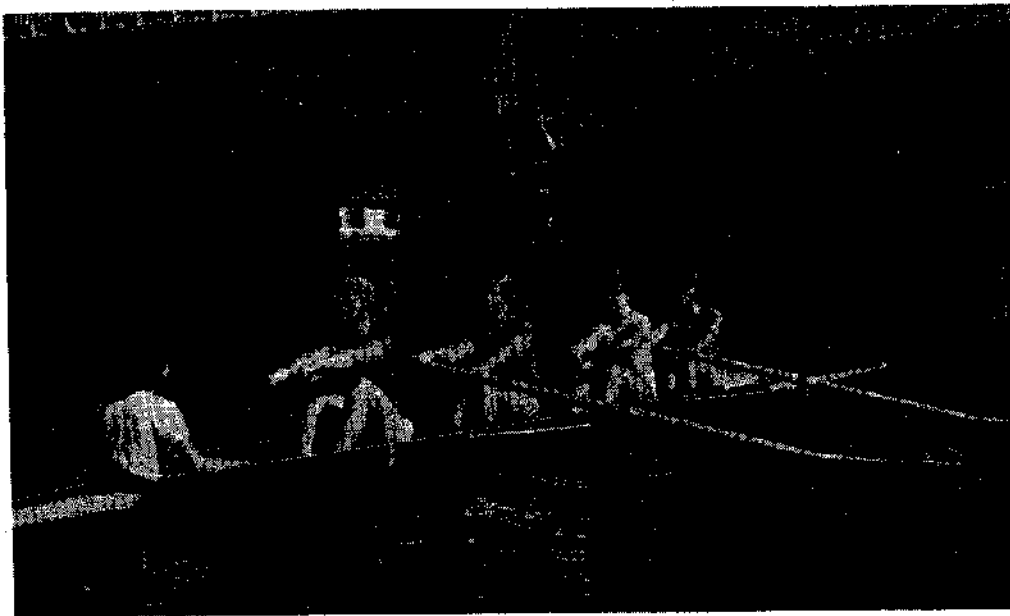
*University of Queensland*



University of Western

Australia

Bow	Rosemary	Barwick
2	Verna	Westward
3	Jane	Cowan
Stroke	Penny	Curry
Cox	Tanya	Borisow
Coach	Terry	Scook



La Trobe University

Bow	Annette	Holland
2	Margaret	Long
3	Rosa	Paris
Stroke	Beverley	Johnstone
Cox	Bernadette	Higgins
Coach	Simon	Tulloh



*Monash University*

*Bow R. Everist*  
*Stroke J. Sjovoljaak*



*Melbourne University*

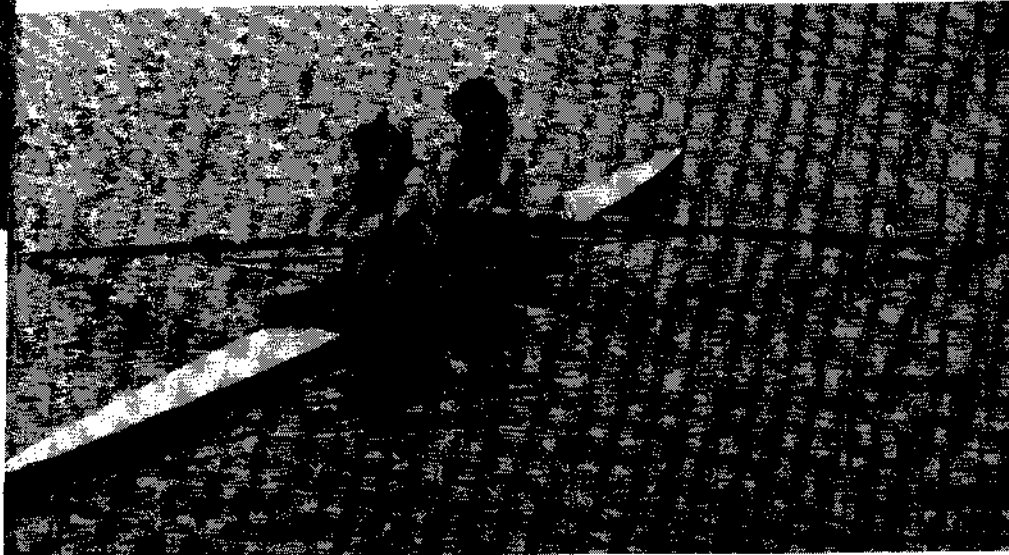
*Bow A. Griffiths*  
*Stroke K. Esser*  
*Coach W. Stokes*

*University of New South  
Wales*

*Bow J. McNamara*  
*Stroke J. Fardy*  
*Coach A. Horsley*



EIGHTH ANNUAL COXWAINLESS PAIRS CHAMPIONSHIP  
FOR THE CARLTON AND UNITED BREWERIES GOBLETS



*Current holders*

*University of  
Tasmania*

*Bow D. McCar  
Stroke P. Kitto*

*University*

*. Griffiths  
. Esser  
. Stokes*

*Sydney University*  
*Bow R. Hessan  
Stroke S. Cole*

*University of Tasmania*

*Bow Andrew Baird  
Stroke Andrew Gibson  
Coach C. King*

*MacQuarie University*

*Bow K. Hendy  
Stroke G. Clayton  
Reserve P. Mathews*

*Adelaide University*

*Bow N.C. Winter  
Stroke A.L. Smith  
Coach M.G. Page*

*La Trobe University*

*Flinders University*

*Bow J. Secthell  
Stroke Henery Duncan*



AUSTRALIAN UNIVERSITIES SCULLING CHAMPIONSHIPS  
WILLS TROPHY

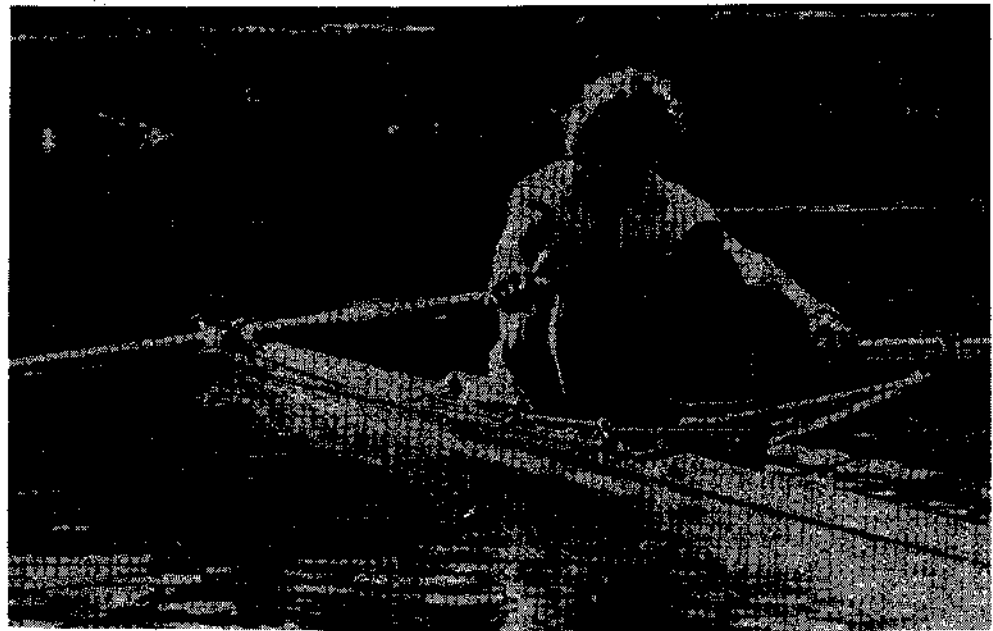


*Current holder*

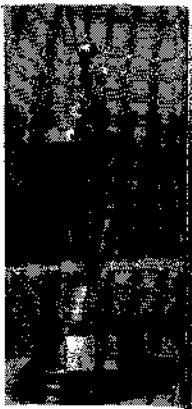
*Ted Hale, University*

*Winner 1971, 1972*

*Australian representat  
Montreal, 1976*

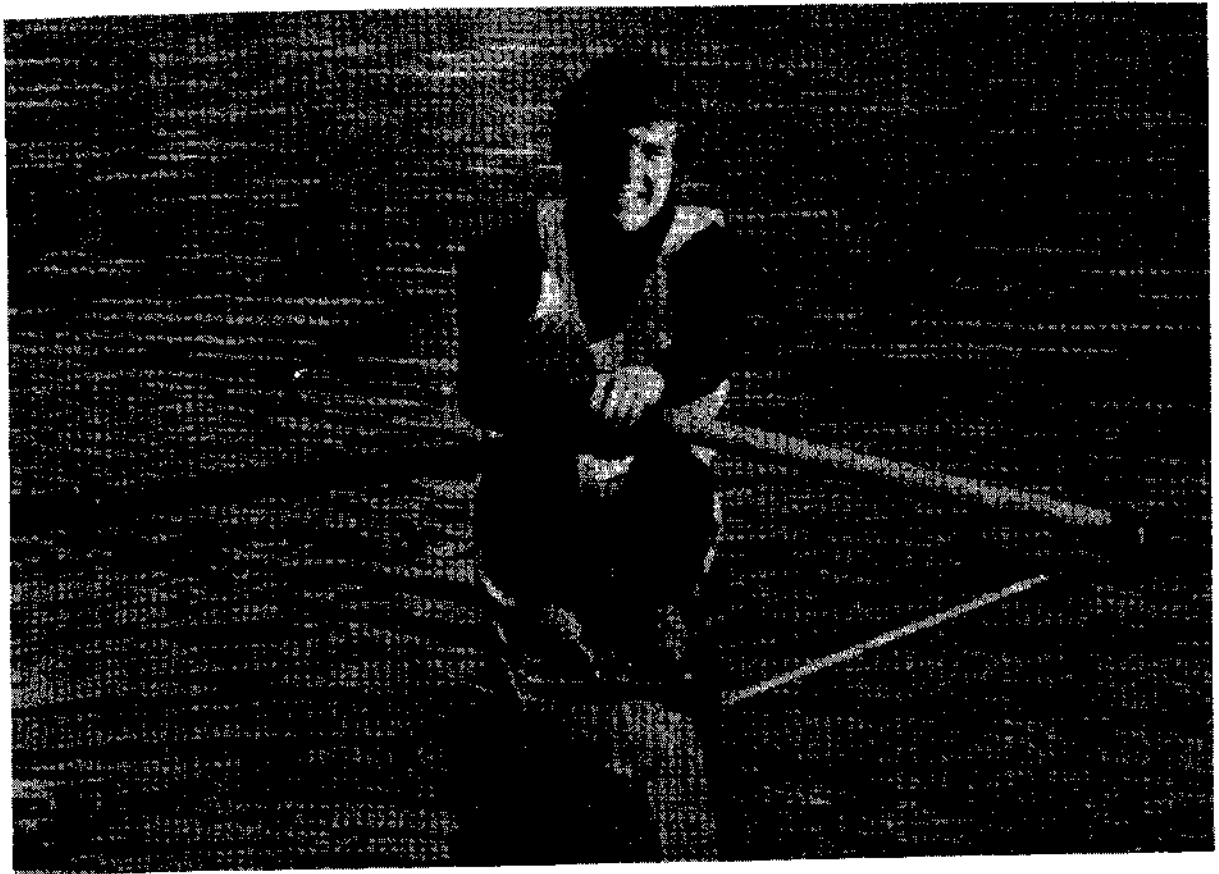


*Melbourne University R.J. Bleakley  
Winner 1974, representing Queenslanc*



Tasmania

sculler



Australian National University

Peter Nevett



University of Queensland

Ralph French

La Trobe University

Monaah University

Sydney University

Clive Allison

Nick Newton

C. Rowe

University of Tasmania

Adelaide University

David Schier

M.G. Hebblewhite

# KATH SUHR CUP

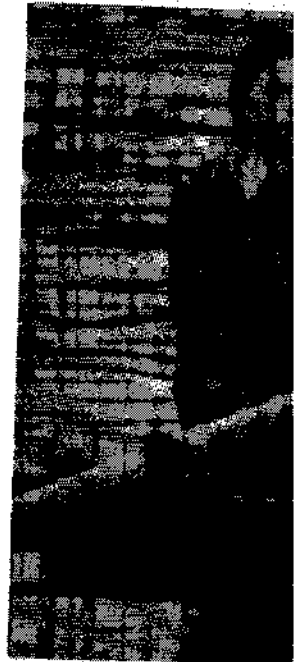
*Current holder*  
*K.N. Norrie*  
*Sydney University*

*University of Tasmania*  
*Shanne McGinnies*

*Sydney University*  
*V. Webb*  
*La Trobe University*  
*Caroline Cottman*

*Monash University*  
*Andrea Giles*

*Australian National University*  
*Judith Anson*



# THE CHALLENGE TROPHY

For womens' coxed pairs

Current holders  
University of Western Australia

University of Tasmania

Bow Kerri Brimfield  
Stroke Cynthia Walsh  
Cox Rosemary Bird  
Coach David Schier

Monash University

Bow Andrea Giles  
Stroke Deb Milner  
Cox Kerry Howard

Sydney University

Bow M. Dally  
Stroke P. Mackenzie  
Cox S. Udall  
Coach M. McKenzie

University of  
Western Australia

Bow P. O'Reilly  
Stroke G. King  
Cox T. Borisow

La Trobe University

Bow Anne Rambaugh  
Stroke Dianne Vale  
Cox Karin Dahl-Paulsen  
Coach Simon Tullch

Adelaide University

Bow Zofia Kramonka  
Stroke Barbara Henrich  
Cox Melinda Sumner  
Coach Phillip Keane

# STROKES

## Early Fours Races

SYDNEY:  
MELBOURNE:

1870 A. Yeomans  
1870 \*T.C. Hope

1871 C.H. Fitzhardinge  
1871 \*T. Coles

## Eights

Sydney	Melbourne	Adelaide	Queensland
1888 E.H. Wilkinson	1888 *S. McCulloch	1888 A.P. Cox	1920 T.J. Bale
1889 Not represented	1889 C.H. Chomley	1889 *R. Cruickshank	1921 F.B. Cullen
1890 *W.A. Conlon	1890 J.G. McKay	1890 Not represented	1922 *E.B. Freeman
1891 *R.F. deB. Lopez	1891 T. Crosthwaite	1891 W.R. Bayly	1923 *E.B. Freeman
1892 R.W. Thomas	1892 *A.R. Morrison	1892 W.R. Bayly	1924 E.B. Freeman
1893 C.H. Helsham	1893 *A.R. Morrison	1893 W.R. Bayly	1925 T.E. Collins
1894 *C.H. Helsham	1894 D.C. Moddison	1894 Not represented	1926 Not represented
1895 *M.C. Chubb	1895 H.A.C. Irying	1895 W.H. Gosse	1927 T.E. Collins
1896 A.G. Purves	1896 H.E. Bullivant	1896 *W.H. Gosse	1928 T.R. Groom
1897 *G.A. Vivers	1897 H.E. Bullivant	1897 W.H. Gosse	1929 J.P. McGrath
1898 *R.P. Hickson	1898 P.C. Hunt	1898 J.D. Connor	1930 Not represented
1899 H.J. Gould	1899 *W.H. Gosse	1899 Not represented	1931 P.C. Lahey
1900 *H.J. Gould	1900 Not represented	1900 J.C. Connor	1932 J.R.A. Walker
1901 *H.O. Lethbridge	1901 H.J. Whiting	1901 Not represented	1933 R.W. McGhie
1902 H.O. Lethbridge	1902 *H.J. Whiting	1902 C.T. Hargrave	1934 Not represented
1903 *V. McDowell	1903 H.J. Whiting	1903 J.R. Muirhead	1935 K. Bradfield
1904 V.V. Nathan	1904 *H.J. Whiting	1904 C.L. Jessop	1936 Not represented
1905 *A. Morrison	1905 H.J. Whiting	1905 J.R. Fullarton	1937 D.C. O'Beirne
1906 A. Morrison	1906 *H.J. Whiting	1906 J.R. Fullarton	1938 S. Hawgood
1907 *A. Morrison	1907 A.G. Greenham	1907 C.A. Hamilton	1939 D.C. O'Beirne
1908 *T.S. Dixon	1908 S. Fraser	1908 C.A. Hamilton	1940 D.McL. Clouston
1909 *T.S. Dixon	1909 F.A.H. Boynton	1909 C.A. Hamilton	1941 D.McL. Clouston
1910 C.N. Douglas	1910 F.A.H. Boynton	1910 *A.L. Kennedy	1942 Not represented
1911 A.J. Robson	1911 *C.S. Steele	1911 A.L. Kennedy	1943 P. Taylor
1912 A.T. Cunningham	1912 *F.H. Moran	1912 C.L. Abbot	1944 P. Taylor
1913 R.G. Wade	1913 *H.C. Disher	1913 D. Yates	1945 P. Taylor
1914 E.A. Woodward	1914 *H.C. Disher	1914 D. Yates	1946 P. Taylor
1915 T.M. Barnett	1915 *A. Spowers	1915 Not represented	1947 P. Taylor
1916 T.M. Barnett	1916 F.H. Hadley	1916 Not represented	1948 P. Taylor
1917 J.C. Wallace	1917 *J.M. Buchanan	1917 *E. Coombes	1949 P. Taylor
1918 L.O. Rutherford	1918 J.M. Buchanan	1918 R.L. Naylor	1950 P. Taylor
1919 P.C. Golding	1919 K.H. Hadley	1919 L.C. Maiden	1951 B. Jones
1920 S.G.O. Martin	1920 *R.H. Keon-Cohen	1920 L.C. Maiden	1952 D.S. Kronfeld
1921 R.N. McCulloch	1921 R.H. Keon-Cohen	1921 L.C. Maiden	1953 D.S. Kronfeld
1922 R.H. Brown	1922 B.T. Keon-Cohen	1922 L.C. Maiden	1954 Not represented
1923 R.H. Brown	1923 A.R.M. Johnson	1923 L.C. Maiden	1955 D.S. Kronfeld
1924 R.H. Brown	1924 A.R.M. Johnson	1924 L.C. Maiden	1956 N. Thomas
1925 R.H. Brown	1925 *W. Sherlock	1925 Not represented	1957 L.G. Andrews
1926 H.W. Smeaden	1926 J.R. Adair	1926 W.M. Morgan	1958 *L.G. Andrews
1927 H.C. Loxton	1927 A.W. Oakley	1927 W.M. Morgan	1959 *L.G. Andrews
1928 H.D. Ruffan	1928 L.L.O. Bevan	1928 W.M. Morgan	1960 J. Job
1929 *H.D. Ruffan	1929 F.D. Scott	1929 W.M. Morgan	1961 J. Adam
1930 I.G. Fagan	1930 K.F. Cole	1930 R.B. Knight	1962 L.J. Warren
1931 *H.K. Deltman	1931 C.P. Sherwood	1931 Not represented	1963 E. Warren
1932 *H.K. Deltman	1932 G.R. Cameron	1932 J.R. Goode	1964 J. Lyndon
1933 *S.F. Finlay	1933 B.B. Sloan	1933 A.C. Douglas	1966 I. Revie
1934 *I.W. Middleton	1934 C.D. Smith	1934 *A.C. Douglas	1967 Not represented
1935 W.A. Pringle	1935 *C.D. Smith	1935 T.R. Goode	1968 Not represented
1936 R.C. Opie	1936 *C.D. Smith	1936 Not represented	1969 J.G. Ricketts
1937 A.G. Robson	1937 C.D. Smith	1937 J.A. Smeaton	1970 J.G. Ricketts
1938 *A.G. Robson	1938 J.C. Everist	1938 Not represented	1971 R. Townsend
1939 *A. Brown	1939 *C.D. Smith	1939 L.S. Bonnum	1972 A. McDonald
1940 *D. Rouke	1940 J.C. Everist	1940 E.H. Hobbs	1973 Not represented
1941 D. Rouke	1941 J.S. Edwards	1941 E.K. Fuller	1974 Not represented
1942 *E.G.F. Cowdery	1942 *P.N. Everist	1942 Not represented	1975 Not represented
1943 B. Northam	1943 *P.N. Everist	1943 Not represented	
1944 D.G. Lane	1944 *C.J. Smith	1943 Not represented	
1945 J. Kennaway	1945 *C.J. Smith	1944 H. Cook	
1946 M.A. Minns	1946 *I.E. Douglas	1945 H. Cook	
1947 H.M. Canvin	1947 *I.M. Jelbart	1946 J. Fassie	
1948 D.J. Goode	1948 J.R. Colville	1947 W. Fotheringham	
1949 J. Rowland	1949 J.M. Jelbart	1948 J.S. Jose	
1950 *K. Half-Johnston	1950 N.C. Courtney	1949 Not represented	
1951 *D. Lynch	1951 D.R. Messenger	1950 Not represented	
1952 *D.P. Lynch	1952 C.S. Keon-Cohen	1950 R.C. Gill	
1953 C.I. Moore	1953 *C.S. Keon-Cohen	1951 P. Humble	
1954 *P. Harris	1954 C.S. Keon-Cohen	1952 P. Bishop	
1955 P. Bookjill	1955 P.L. Renouf	1953 D. Sarah	
1956 P. Harris	1956 *B.A. Keon-Cohen	1954 R.D. Cheesman	
1957 K.A. Wharton	1957 *A.K. Ferguson	1955 P. Humble	
1958 R.F.P. Pigott	1958 *A.K. Ferguson	1956 R.C. Gill	
1959 R.B. Hampshire	1959 *L.G. Farran	1957 P. Humble	
1960 A.M. Curtin	1960 I.G. Farran	1958 P. Bishop	
1961 C.D. Shinnars	1961 S. Swaney	1959 J.M. Jelbart	
1962 A.M. Curtin	1962 R.J. Atkinson	1960 R.D. Cheesman	
1963 J. B. Siverwright	1963 R.J. Atkinson	1961 P. Humble	
1964 D. Roberts	1964 R.J. Atkinson	1962 R. Benny	
1965 D. Roberts	1965 S. Swaney	1963 A.L. Southcott	
1966 D. Roberts	1966 S. Swaney	1964 D.A. Pritchard	
1967 D. Roberts	1967 S. Swaney	1965 B.P. Southcott	
1968 D. Roberts	1968 S. Swaney	1966 B.P. Southcott	
1969 D. Roberts	1969 S. Swaney	1967 B.P. Southcott	
1970 D. Roberts	1970 S. Swaney	1968 H.N. Jeffries	
1971 D. Roberts	1971 S. Swaney	1969 I. Munro	
1972 D. Roberts	1972 S. Swaney	1970 M. Jeffries	
1973 D. Roberts	1973 S. Swaney	1971 T.D.H. Marshall	
1974 D. Roberts	1974 S. Swaney	1972 D. Hatcher	
1975 D. Roberts	1975 S. Swaney	1973 B.J. Richardson	
		1974 B.J. Richardson	
		1975 C.W. Lott	
		1975	

Fitzhardinge  
 Jules  
  
 Queensland  
 O.T.J. Bale  
 1 E.B. Cullen  
 2 \*E.B. Freeman  
 3 \*E.B. Freeman  
 4 E.B. Freeman  
 5 T.E. Collins  
 6 Not represented  
 7 T.E. Collins  
 8 T.R. Groom  
 9 J.P. McGrath  
 Not represented  
 P.C. Lahey  
 J.R.A. Walker  
 R.W. McGhie  
 Not represented  
 K. Bradfield  
 Not represented  
 D.C. O'Beirne  
 S. Hawgood  
 D.C. O'Beirne  
 D.McL. Clouston  
 D.McL. Clouston  
 Not represented  
 P. Taylor  
 P.A. Taylor  
 B. Jones  
 D.S. Kronfeld  
 D.S. Kronfeld  
 Not represented  
 D.S. Kronfeld  
 V. Thomas  
 L.G. Andrews  
 L.G. Andrews  
 L.G. Andrews  
 Job  
 Adam  
 J. Warren  
 Warren  
 Lyndon  
 Revie  
 Not represented  
 Not represented  
 G. Ricketts  
 G. Ricketts  
 Townsend  
 McDonald  
 Not represented  
 Not represented  
**Not represented**

WEST AUSTRALIA  
 1927 \*F.A. Williams  
 1928 \*O.P. Fry  
 1929 O.P. Fry  
 1930 \*M. Loiz  
 1931 Not represented  
 1932 \*J.R.S. Burnett  
 1933 Not represented  
 1934 C.S.C. Wickens  
 1935 J. Wilkins  
 1936 D. Fraser  
 1937 Not represented  
 1938 Not represented  
 1939 B. Barratt Hill  
 1940 Not represented  
 1941 F. Slee  
 1942 H.L. Paton  
 1943 Not represented  
 1944 G. Westlake  
 1945 F. Slee  
 1946 F. Slee  
 1947 R.S. White  
 1948 R.H. Kernot  
 1949 Not represented  
 1950 R. Thompson  
 1951 A. Bird  
 1952 A. Bud  
 1953 H.D. Evans  
 1954 A. Bird  
 1955 Not represented  
 1956 A. Druk  
 1957 A.A. Burbridge  
 1958 A.A. Burbridge  
 1959 D. Gillespie  
 1960 R.A. Nutsen  
 1961 R. Fitzhardinge  
 1962 R.M. Rowell  
 1963 M. LeSoeul  
 1964 M. Rowell  
 1965 C.H. Curry  
 1966 R. Fitzhardinge  
 1967 D. A. Bean

SYDNEY  
 1963 T. Nelson  
 1964 B. Sillar  
 1965 P. Titterton  
 1966 P.A. Titterton  
 1967 A.A. Lyons  
 1968 A.G. Fitzgrew  
 1969 N.C. Croker  
 1970 F. Carter  
 1971 S. Boothby  
 1972 J. Barrett  
 1973 H. Barrett  
 1974 H. Barrett  
 1975 H. Barrett

UNI OF N.S.W.  
 1963 R. Clarke  
 1964 T. Harnock  
 1965 E. Barnhart  
 1966 R. Stevenson  
 1967 J. Koran  
 1968 O. Boothby  
 1969 A. Hurnby  
 1970 Not represented  
 1971 D.J. McDonald  
 1972 P. Duncan  
 1973 P. Duncan  
 1974 P. Duncan  
 1975 P. Duncan

MELBOURNE  
 1969 \*W.G. Macconnie  
 1970 \*D.M. Barbridge  
 1971 \*D.M. Barbridge  
 1972 G.J. Dobby  
 1973 \*A.G. Macconnie  
 1974 D. W. Langdon  
 1975

QUEENSLAND  
 1972 W. Sandford  
 1973 Not represented  
 1974 Not represented

UNI OF N.S.W.  
 1956  
 1957 A.W. Crundy  
 1958 D.B. Curchod  
 1959 D.B. Curchod  
 1960 W. Young  
 1961 W. Hatfield  
 1962 W. Young  
 1963 R. Sutton  
 1964 D. Mare  
 1965 R. Hearn  
 1966 R. Hearn  
 1967 R. Hearn  
 1968 R. Hearn  
 1969 J. Brennan  
 1970 P. Wagner  
 1971 B. Chrtin  
 1972 J. O. Trevivian  
 1973 P. Wilkinson  
 1974 S. J. Kalfas  
 1975 J. Butler

LATROBE  
 1969 J. Swaney  
 1970 J.A. Kettlewell  
 1971 Not represented  
 1972 R. Orchard  
 1973 J. Kettlewell  
 1974 S. Derham

AUSTRALIAN NATIONAL UNIVERSITY  
 1967 D.J.W. Troon  
 1968 R.A. Chown  
 1969 A. Griffiths  
 1970 A. Griffiths  
 1971 C.R. Lawrence  
 1972 K.W. Currie  
 1973 N. Cooper  
 1974 Not represented

**LIGHTWEIGHT FOURS**

TASMANIA  
 1963 J.D. Fricke  
 1964 L.R. Winter  
 1965 Not represented  
 1966 Not represented  
 1967 Not represented  
 1968 Not represented  
 1969 C. Schwosover  
 1970 K. Brown  
 1971 Not represented  
 1972 Not represented  
 1973 C. Shrubree  
 1974 Not represented

WEST AUSTRALIA  
 1964 D.A. Cameron  
 1965 R.M. Rowell  
 1966 D.A. Cannon  
 1967 E.M. Rowell  
 1968 M.S. Connor  
 1969 M.S. Connor  
 1970 M.S. Connor  
 1971 Not represented  
 1972 Not represented  
 1973 Not represented  
 1974 Not represented

LATROBE  
 1974 J. Frazer  
**PAIRS**

ADELAIDE  
 1970 R. Colles  
 1971 A.D. Crompton  
 1972 M. Radnor  
 1973 A. Hardy  
 1974 P. S. Keane

MONASH  
 1969 E.M. Thompson  
 1971 J. Guest  
 1972  
 1973 I.H. Yunccon  
 1974 Not represented

MONASH  
 1963 M.F. McKenna  
 1964 W.B. Hutchins  
 1965 S.R. Bennett  
 1966 J. Nissen  
 1967 J. Nissen  
 1968 J.E. Bourke  
 1969 M.J. Kerin  
 1970 \*W.J. Bailieu  
 1971 \*W.J. Bailieu  
 1972 \*W.J. Bailieu  
 1973 \*S.B. Jelbart  
 1974 G.W. Green  
 1975 G. Green

NEWCASTLE  
 1966 W.H. Sweetland  
 1967 Not represented  
 1968 Not represented  
 1969 L. Lewis  
 1970 Not represented  
 1971 S. Silver  
 1972 P. Muller  
 1973 H. Umlauff  
 1974 Not represented

ADELAIDE  
 1963 A.B. Fannell  
 1964 R.E. Bolte  
 1965 \*P.R. Gordon  
 1966 P.R. Gordon  
 1967 P.R. Gordon  
 1968 P.R. Gordon  
 1969 H. Newland  
 1970 W. Fawcett  
 1971 H.S. Newland  
 1972 Not represented  
 1973 W.S. Moody  
 1974 W.S. Young  
 1975 W.S. Wood

NEWCASTLE  
 1966 W.H. Sweetland  
 1967 F. Lynch  
 1968 W. Henry  
 1969 Not represented  
 1970 Not represented  
 1971 E. Lewis  
 1972 Not represented  
 1973 S. Hughes  
 1974 Not represented

AUSTRALIAN NATIONAL UNIVERSITY  
 1966 R. Stank  
 1967 Not represented  
 1968 Not represented  
 1969 R.W. Faltridge  
 1970 A.R. Hill  
 1971 M. Hassett  
 1972 R.C.M. Goldsmith  
 1973 P. Nevett  
 1974 P. H. Nevett

MONASH  
 1966 R.S. Searle  
 1967 J.H. Donaldson  
 1968 W. Henry  
 1969 Not represented  
 1970 M.F. Owen  
 1971 W. John  
 1972 C. Lowe  
 1973 M.F. Owen  
 1974 J. A. C. Nevett

WEST AUSTRALIA  
 1971 D. Holt  
 1972 M. Katz  
 1973 S. Willard  
 1974 J. Taylor  
 1975 G.H. Leno

WEST AUSTRALIA  
 1973 A. Wilkins  
 1974 B.J. McKenzie  
 1975 I.P. Clait

MACQUARIE  
 1974 J.A. McCann

AUSTRALIAN NATIONAL UNIVERSITY  
 1971 M.B. Newsom  
 1972 Not represented  
 1973 Not represented  
 1974 J. A. Bartley

FLINDERS  
 1973 D. Fotheringham  
 1974 Not represented

TASMANIA  
 1974 M. Egan  
 1975 P. Kitt



# RESULTS 1870 - 1974

## Early Races

Year	Course	Winner	Time	Margin
1870	Yarra, Vic.	Melbourne	31.4	Four Oar
1871	Parramatta, N.S.W.	Melbourne	27.25	Four Oar
1888	Yarra, Vic.	Melbourne	13.5	4 lengths (2 miles)
1889	Port Adelaide, S.A.	Adelaide	16.8%	3 lengths (2½ miles against)
1890	Yarra, Vic.	Sydney	14.48%	5 lengths (2½ miles)
1891	Parramatta, N.S.W.	Sydney	17.21	4 lengths
1892	Port Adelaide, S.A.	Melbourne	17.21	6 feet
1893	Yarra, Vic.	Melbourne	16.5	2½ lengths
1894	Parramatta, N.S.W.	Sydney	17.0	10 lengths
1895	Port Adelaide	Sydney	15.45	6 lengths

## The Oxford and Cambridge Cup for V111's

1896	Yarra, Vic.	Adelaide	20.41	6 lengths (strong headwind)
1897	Parramatta, N.S.W.	Sydney	18.8	4 lengths
1898	Port Adelaide, S.A.	Sydney	18.6%	6 lengths
1899	Yarra, Vic.	Melbourne	23.2%	5 lengths (strong headwind)
1900	Parramatta, N.S.W.	Sydney	17.1	
1901	Yarra, Vic.	Sydney	16.48	½ length
1902	Port Adelaide, S.A.	Melbourne	16.44	3 lengths
1903	Parramatta, N.S.W.	Sydney	15.36	5 lengths
1904	Yarra, Vic.	Melbourne	18.1-4/5	3 lengths
1905	Port Adelaide, S.A.	Sydney	17.37	5 lengths
1906	Parramatta, N.S.W.	Melbourne	15.15	3 lengths (just under 3 mil)
1907	Yarra, Vic.	Sydney	15.33	3 lengths
1908	Port Adelaide, S.A.	Sydney	15.45	lengths
1909	Parramatta, N.S.W.	Sydney	15.50	5 lengths
1901	Yarra, Vic.	Adelaide	17.35	4 lengths (2½ miles against)
1911	Port Adelaide, S.A.	Melbourne	16.29	1½ lengths
1912	Parramatta, N.S.W.	Melbourne	17.0	3 lengths
1913	Yarra, Vic.	Melbourne	15.11-3/5	6 lengths (2½ miles)
1914	Port Adelaide, S.A.	Melbourne	17.46-2/5	7 lengths
1915-18	No race on account of Great War.			
1919	Parramatta, N.S.W.	Melbourne	19.34%	3 lengths (3 miles and 167)
1920	Yarra, Vic.	Adelaide	16.15	1½ lengths (2½ miles)
1921	Brisbane, Q.	Melbourne	17.25	1 length
1922	Port Adelaide, S.A.	Queensland	-----	1½ lengths
1923	Parramatta, N.S.W.	Queensland	17.43-1/5	4 lengths
1924	Yarra, Vic.	Melbourne	16.14	½ length (2½ miles)
1925	Brisbane, Q.	Tasmania	17.56	2½ lengths
1926	Huon, Tas.	Sydney	-----	½ length
1927	Hepean, N.S.W.	W.A.	17.30	1½ lengths
1928	Murray, S.A.	W.A.	16.43	2 lengths
1929	Yarra, Vic.	Melbourne	14.27-1/5	2½ lengths (2½ miles)
1930	Swan, W.A.	W.A.	19.57-3/5	¾ length
1931	Brisbane (H.R.), Q.	Sydney	17.40	9½ lengths
1932	Huon, Tas.	W.A.	17.19%	5 lengths
1933	Nepean, N.S.W.	Sydney	16.29	2 lengths
1934	Mannum, S.A.	Adelaide	15.30	5 lengths
1935	Yarra, Vic.	Sydney	15.17	2 lengths (2½ miles)
1936	Swan, W.A.	Sydney	12.30-2/5	2 lengths (2 miles)
1937	Brisbane (H.R.) Q.	Sydney	17.30-2/5	2½ lengths (3 miles)
1938	Huon, Tas.	Sydney	15.44	1½ lengths
1939	Nepean, N.S.W.	Melbourne	16.38	1½ lengths
1940	Nepean, N.S.W.	Melbourne	16.57	3-4 lengths
1946	Murray, S.A.	Melbourne	-----	1 length
1947	Nepean, N.S.W.	Sydney	16.51	1½ lengths
1948	Swan, W.A.	Sydney	12.11	(2 miles)
1949	Brisbane (H.R.) Q.	Sydney	11.45	2 lengths (2 miles)
1950	Yarra, Vic.	Melbourne	10.50-1/5	3 lengths (2 miles)
1951	Huon, Tas.	Melbourne & Sydney	14.46	Fast conditions
1952	Murray, S.A.	Melbourne	17.12	2 lengths
1953	Nepean, N.S.W.	Melbourne	16.13	1/3 length
1954	Swan, W.A.	Melbourne	11.38	1½ lengths (2 miles)
1955	Brisbane (H.R.) Q.	Melbourne	17.54%	8 lengths
1956	Yarra, Vic.	Melbourne	13.7	4 lengths (2½ miles)
1957	Derwent, Tas.	Melbourne	15.31	2 lengths
1958	Port R. S.A.	Queensland	17.48	4 lengths
1959	Nepean, N.S.W.	Queensland	16.5%	¾ length
1960	Swan, W.A.	Sydney	10.21-4/5	2 lengths (2 miles - less 1)
1961	Brisbane, Q.	Sydney	11.5	4 lengths (2 miles)
1962	Nepean, N.S.W.	Sydney	15.30	¾ length
1963	Yarra, Vic.	Melbourne	12.1425	4 lengths, 20 secs (2½ m)
1964	Franklin, Tas.	Sydney	15.39	1½ lengths
1965	No Contest			

1966	Mannum, S.A.	Tasmania	16.10	2 lengths
1967	Nepean, N.S.W.	Melbourne	15.59	¾ length
1968	Canning, W.A.	Melbourne	10.53	0.5 second (2 miles)
1969	Lake Wendouree	Melbourne	6.26.9	1 length (2000 metres)
1970	Lake Burley Griffin	Melbourne	6.28.9	1½ lengths
1971	Lake Kurwongbah, Qld.	Monash	6.35	0.1 sec.
1972	Manning, N.S.W.	Monash	7.33	1.25 lengths
1973	Mildura, Vic.	Monash	5.31.2	0.05 secs.
1974	Nepean, N.S.W.	Adelaide	5.40.4	0.05 secs.
1975	Franklin Tas	Melbourne	5:57.4	3 secs

miles)  
miles against wind and  
miles)

### Sir Fred J. Schoneil Cup for Lightweight IV's

IV's

ing headwind)

ing headwind)

Year	Course	Winner	Time	Margin
1963	Yarra, Vic.	Melbourne	7.20	4 lengths
1964	Franklin, Tas.	Melbourne	6.49	3 lengths
1965	No Contest		6.58	1 length
1966	Mannum, S.A.	Adelaide	7.16	¾ length
1967	Nepean, N.S.W.	Melbourne	6.53	0.5 second
1968	Canning, W.A.	Sydney	7.14	3 lengths
1969	Lake Wendouree	Melbourne	7.17.8	3 lengths
1970	Lake Burley Griffin	Melbourne	7.45	2½ lengths
1971	Lake Kurwongbah, Qld.	Melbourne	8.50.5	2.7 secs.
1972	Manning, N.S.W.	Melbourne	6.9.65	Easily
1973	Mildura, Vic.	Melbourne	6.36.2	5.2 secs
1974	Nepean, N.S.W.	Adelaide	6:39.6	14.5 secs.
1975	Franklin Tas	Melbourne	6:39.6	6 secs

### Australian Universities' Sculling Championship

under 3 miles)

miles against wind and

miles)

miles and 167 yards)

miles)

miles)

miles)

miles)

cs)

cs)

cs)

cs)

miles)

cs - less 126 yds)

cs)

cs (2½ miles)

Year	Course	Winner	Second	Margin
1927	Penzance	K.A. Flavell, Sydney	S.R. Bell, Melbourne	1½ lengths
1928	Mannum, S.A.	K.A. Flavell, Sydney	---	Row over
1929	Melbourne, Vic.	K.A. Flavell, Sydney	A. Crothers, Melbourne	10 lengths
1930-36	No Race			
1937	Brisbane, Qld.	R. Reid, Queensland	---	Row over
1938-39	No Race			
1952	Murray, S.A.	B. Sundstrap, Sydney	P. Royce, S.A.	
1953	Nepean, N.S.W.	J. Hunt, Melbourne		
1954	Swan, W.A.	B. Adams, Sydney	F. Maslen, W.A.	
1957	Derwent, Tas.	B. Ninnham, W.A.	I. P. Roberts, Sydney	
1958	Port R. S.A.	W. Hatfield N.S.W.	J. Mulcahy, Melbourne	
1959	Nepean, N.S.W.	W. Hatfield N.S.W.	J. Hazard, Q.	16 lengths
1960	Swan, W.A.	M. Wignall, Sydney	D. Durston, W.A.	
1961	Brisbane, Q.	R. Troussicot, Tas.	W. Hatfield, N.S.W.	
1962	Nepean, N.S.W.	D. Walker, W.A.	W. Hatfield, N.S.W.	2 feet
1963	Yarra, Vic.	A. Skinner, Sydney	P.R. Messenger, Melbourne	4 lengths
1964	Franklin, Tas.	J. Bennett, Queensland	J. Yuille, W.A.	
1965	No Contest			
1966	Mannum, S.A.	P.H. Hobson, Monash	M.J. Reynolds, Queensland	20 lengths
1967	Nepean, N.S.W.	R.M. Reddell, Sydney	K.P. Jelbart, Aust. Nat.	4 lengths
1968	Canning, W.A.	M.J. Reynolds, Queensland	I.R. Lee, Sydney	15.5 seconds
1969	Lake Wendouree	M.J. Reynolds, Queensland	R. Drury, N.S.W.	3 lengths
1970	Lake Burley Griffin	R.M. Reddell, Sydney	P.H. Hobson, N.S.W.	2½ lengths
1971	Lake Kurwongbah, Qld.	F.O. Hale, Tas.	I.R. Lee, Sydney	8.3 secs.
1972	Manning, N.S.W.	F.O. Hale, Tas.	P.H. Hobson, N.S.W.	Easily
1973	Mildura, Vic.	I.R. Lee, Sydney	G. Larkins, W.A.	27 secs.
1974	Nepean, N.S.W.	R. J. Bleakley, Queensland	A. Whitworth, Melbourne	21 secs.
1975	Franklin Tas	E.O. Hale, Tas	M. Brown Sydney	32.6 secs

### Carton & United Goblets for Cox'less Pairs

1969	Lake Wendouree	Melbourne	7.5.3.1	1½ lengths
1970	Lake Burley Griffin	Melbourne	7.5.7.5	3 lengths
1971	Lake Kurwongbah, Qld.	Melbourne	8.18	16.6 secs.
1972	Manning, N.S.W.	Sydney	9.57.5	Easily
1973	Mildura, Vic.	Melbourne	6.36.4	6.2 secs.
1974	Nepean, N.S.W.	Melbourne	7.19.6	5.2 secs.
1975	Franklin Tas	Tasmania	7.19	11.5secs

# WOMEN'S RESULTS

## Lady Margaret Cup for Coxed Fours

1968	Sydney
1969	Sydney
1970	Melbourne
1971	Sydney
1972	Declared no contest
1973	Newcastle
1974	Western Australia
1975	Tasmania

## The Challenge Trophy for Coxed Pairs

1968	Newcastle
1969	Newcastle
1970	Queensland
1971	Western Australia
1972	Australian National University
1973	Newcastle
1974	La Trobe
1975	Western Australia

## The Kath Suhr Sculling Cup

1968	Margaret Clarke (Newcastle)
1969	Anne Ellison (Sydney)
1970	—
1971	Liz Minti (Sydney)
1972	Rosalind Southwood-Jones (A.N.U.)
1973	Sue Kemp (Newcastle)
1974	Anne Parkin (La Trobe)
1975	K. Norrie (Sydney)

## Summary of wins of Oxford and Cambridge Cup

Melbourne	70	starts	33.5	wins
Sydney	79	starts	27.5	wins
Adelaide	60	starts	6	wins
Western Aust.	34	starts	4	wins
Queensland	38	starts	4	wins
Monash	12	starts	3	wins
Tasmania	29	starts	2	wins
N.S.W.	10	starts		
A.N.U.	7	starts		
Newcastle	5	starts		
La Trobe	5	starts		
Macquarie	2	starts		

PROGRAMME.

FRIDAY, 14th MAY, 1976.

EVENT 1: SIR FRED J. SCHONELL CUP FOR MEN'S COXED LIGHTWEIGHT FOURS.

10.00a.m.	- Heat 1 -	1st 500	Place	Margin	Time
Station 2	MACQUARIE		4	.....	.....
Station 3	A.N.U.	1:44.5	2	.....	.....
Station 4	FLINDERS		3	.....	.....
Station 5	TASMANIA	1:43.4	1	.....	.....

EVENT 2:

10.15a.m.	- Heat 2 -	5000 1-41	1005	3rd 5	Place	Margin	Time
Station 2	MONASH		3:24.2	2 - 5:14.7	2	.....	7:05.
Station 3	MELBOURNE		3:19.2	1 - 5:5.6	1	.....	6:53.5
Station 4	ADELAIDE			3 -	3	.....	.....

EVENT 3: THE CARLTON AND UNITED GOBLET'S FOR MEN'S COXWAINLESS PAIR

10.30a.m.	- Heat 1 -	Place	Margin	Time
Station 2	SYDNEY	.....	.....	.....
Station 3	MACQUARIE	.....	.....	.....
Station 4	ADELAIDE	.....	.....	.....
Station 5	MONASH	.....	.....	.....

EVENT 4:

10.45a.m.	- Heat 2 -	Place	Margin	Time
Station 2	MELBOURNE	1	3:47.5/6.7	.....
Station 3	TASMANIA	.....	.....	.....
Station 4	N.S.W.	.....	.....	.....
Station 5	FLINDERS	.....	.....	.....

Crews placed first and second in heats proceed to finals, remainder to repercharges.

Draw for repercharge, will be held 30 minutes after the last heat in the Ballarat City Shed.

EVENT 5: W.D. & H.O. WILLS TROPHY FOR MEN'S SCULLS

Time	Heat	Station	Time	Place	Margin	Time
11.00a.m.	- Heat 1 -					
		Station 2	MELBOURNE	3 58	2	5 59.6
		Station 3	A.N.U.	3 44	1	5 44.6
		Station 4	TASMANIA	2 56	3	
		Station 5	N.S.W.			

EVENT 6:

Time	Heat	Station	Place	Margin	Time
11.15a.m.	- Heat 2 -				
		Station 2	SYDNEY		
		Station 3	QUEENSLAND		
		Station 4	ADELAIDE		
		Station 5	MONASH		

EVENT 7: THE OXFORD AND CAMBRIDGE CUP FOR EIGHTS.

Time	Heat	Station	Time	Place	Margin	Time
11.30a.m.	- Heat 1 -					
		Station 2	MONASH	(3) 3.04	$\frac{1}{2}$ length	
		Station 3	MELBOURNE	1 30 (2) 3.05	4.40 $\frac{1}{2}$ lgs.	6.16.5
		Station 4	TASMANIA	(1) 3.03		6.15.1
		Station 5	A.N.U.	(4) .....		

EVENT 8:

Time	Heat	Station	Time	Place	Margin	Time
11.45a.m.	- Heat 2 -					
		Station 2	SYDNEY	1 35	2	3.03.1
		Station 3	ADELAIDE		1	3.03
		Station 4	LA TROBE		4	
		Station 5	W.A.		3	

EVENT 9: LADY MARGARET CUP FOR WOMEN'S COXED FOURS

Time	Heat	Station	Place	Margin	Time
12.00	- Heat 1 -				
		Station 2	QUEENSLAND		
		Station 3	W.A.		
		Station 4	ADELAIDE		
		Station 5	MONASH		

EVENT 10:

12.15p.m. - Heat 2 -	Place	Margin	Time
Station 2 FLINDERS	.....	.....	.....
Station 3 TASMANIA	.....	.....	.....
Station 4 LA TROBE	.....	.....	.....
Station 5 / SYDNEY	.....	.....	.....

EVENT 11: LIGHTWEIGHT FOURS

2.30p.m. - Repercharge -	Place	Margin	Time
Station 2 <i>Adelaide</i>	...1...	.....	.....
Station 3	.....	.....	.....
Station 4	.....	.....	.....

EVENT 12: COXWAINLESS PAIRS

2.45p.m. - Repercharge -	Place	Margin	Time
Station 2	.....	.....	.....
Station 3	.....	.....	.....
Station 4	.....	.....	.....
Station 5	.....	.....	.....

EVENT 13: MENS SCULLS

3.00p.m. - Repercharge -	Place	Margin	Time
Station 2 <i>Adelaide</i>	...3...	.3.....	.....
Station 3 <i>Tas</i>	...2...	.3 length.	.....
Station 4 <i>Monash</i>	...1...	.3 length.	.8.45.
Station 5	.....	.....	.....

EVENT 14: EIGHTS

3.15p.m. - Repercharge -	Place	Margin	Time
Station 2 <i>A.N.U.</i>	...2...	.1/2 Metre.	6:34..
Station 3 <i>Monash</i>	...1... 3.10	. length. 4.49	6:31....
Station 4 <i>W.A.</i>	...3...	.....	.....
Station 5 <i>La Trobe</i>	...4...	.....	.....



SATURDAY MAY 15th 1976.

EVENT 1: LIGHTWEIGHT FOURS

12.30p.m. - Petite Final -	Place	Margin	Time
Station 3 <i>FLINDERS</i>	.....	.....	....
Station 4 <i>MACQUARIES</i>	.....	.....	....

EVENT 2: COXWAINLESS PAIRS

12.45p.m. - Petite Final -	Place	Margin	Time
Station 3	.....	.....	....
Station 4	.....	.....	....

EVENT 3: MENS SCULLS

1.00p.m. - Petite Final -	Place	Margin	Time
Station 3	.....	.....	....
Station 4	.....	.....	....

EVENT 4: EIGHTS

1.15p.m. - Petite Final -	Place	Margin	Time
Station 3 <i>Katoko</i>	.....	.....	....
Station 4 <i>W.A.</i>	.....	.....	....

EVENT 5: SIR FRED J. SCHONELL CUP FOR MEN'S COXED LIGHTWEIGHT FC

1.30p.m. - Final -	Place	Margin	Time
Station 1 <i>A.N.U.</i>	.....	.....	....
Station 2 <i>Adelaide</i>	.....	.....	....
Station 3 <i>Tasmania</i>	.....	.....	....
Station 4 <i>M.V.B.C.</i>	.....	.....	....
Station 5 <i>Merash.</i>	.....	.....	....

EVENT 6: THE CARLTON AND UNITED GOBLET'S FOR MEN'S COXSWAINLESS PAIR.

1.45p.m.	- Final -	Place	Margin	Time
Station 1	N.S.W.	.....	.....	.....
Station 2	SYDNEY	.....	.....	.....
Station 3	M.V.B.C.	.....	.....	.....
Station 4	Tasmania	.....	.....	.....
Station 5	Adelaide	.....	.....	.....
Station 6	Flinders	.....	.....	.....

EVENT 7: W.D. AND H.O. WILLS TROPHY FOR MEN'S SCULLS.

2.00p.m.	- Final -	Place	Margin	Time
Station 1	Sydney	.....	.....	.....
Station 2	O'Leary	.....	.....	.....
Station 3	M.V.B.C.	.....	.....	.....
Station 4	A.N.U.	.....	.....	.....
Station 5	Adelaide	.....	.....	.....
Station 6	Tasmania	.....	.....	.....

EVENT 8: THE OXFORD AND CAMBRIDGE CUP FOR EIGHTS.

2.15p.m.	- Final -	Place	Margin	Time
Station 1	Adelaide	.....	.....	.....
Station 2	Tasmania	.....	.....	.....
Station 3	M.V.B.C.	.....	.....	.....
Station 4	A.N.U.	.....	.....	.....
Station 5	Sydney	.....	.....	.....
Station 6	Monash.	.....	.....	.....

EVENT 9: THE CHALLENGE TROPHY FOR WOMENS COXED PAIRS

2.30p.m.	-Final -	Place	Margin	Time
Station 1	SYDNEY	.....	.....	.....
Station 2	W.A.	.....	.....	.....
Station 3	TASMANIA	.....	.....	.....
Station 4	MONASH	.....	.....	.....
Station 5	ADELAIDE	.....	.....	.....
Station 6	LA TROBE	.....	.....	.....

EVENT 10: KATH SUHR TROPHY FOR WOMEN'S SCULLS.

2.45p.m. - Final -	Place	Margin
Station 2 LA TROBE	.....	.....
Station 3 TASMANIA	.....	.....
Station 4 SYDNEY	.....	.....

EVENT 11: WOMENS FOURS

3.00p.m. - Petite Final -	Place	Margin
Station 3	.....	.....
Station 4	.....	.....

EVENT 12: THE LADY MARGARET CUP FOR WOMEN'S COXED FOURS

3.15p.m. - Final -	Place	Margin
Station 1	.....	.....
Station 2	.....	.....
Station 3	.....	.....
Station 4	.....	.....
Station 5	.....	.....
Station 6	.....	.....

PRESENTATIONS TO WINNING CREWS WILL BE MADE AT THE  
 INTERVARSITY DINNER. 7p.m. SATURDAY MAY 15th 1976.  
 WENDOUREE SHIRE HALL.

\*\*\*\*\*