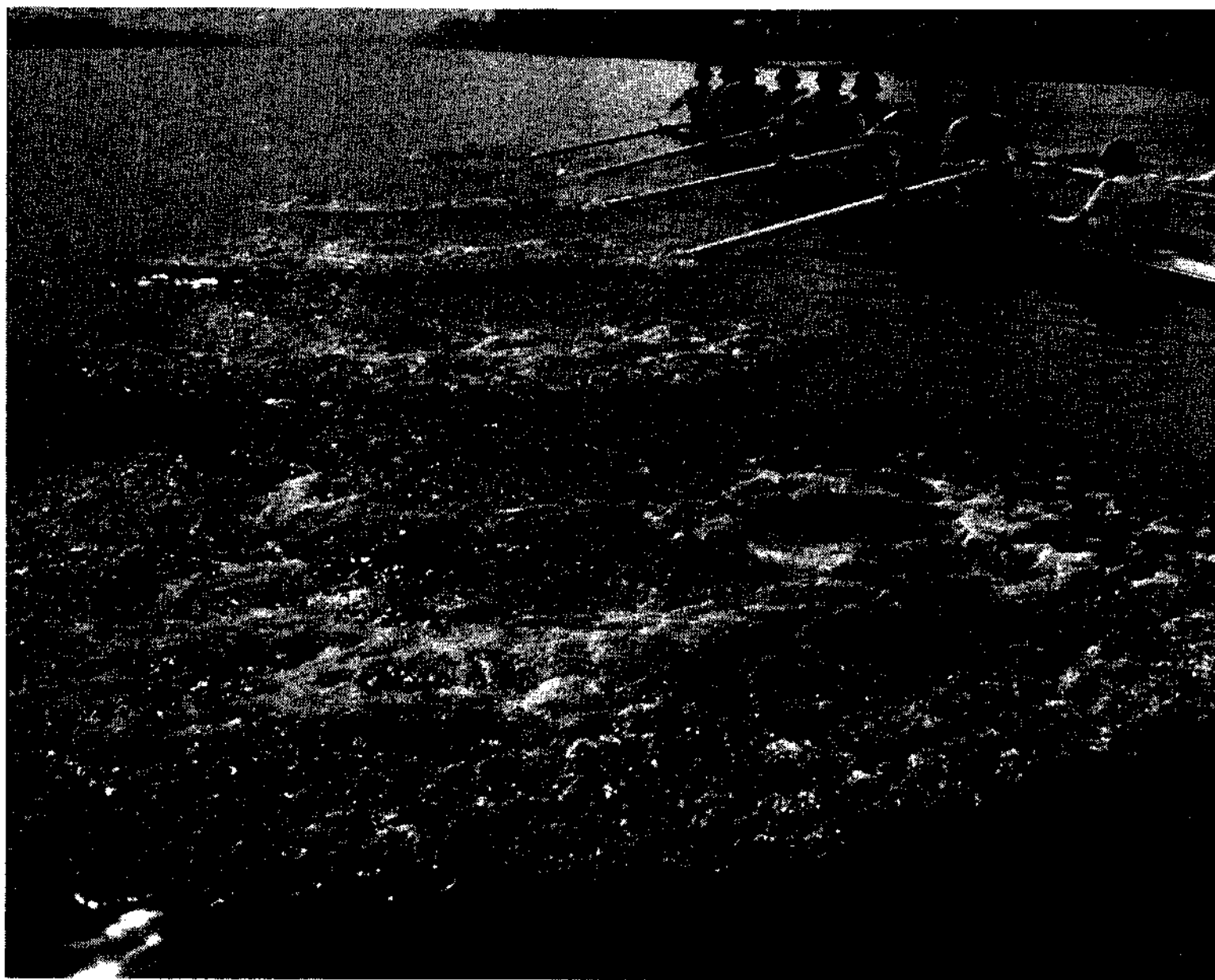


The Australian Universities 78th Rowing Championships and Boat Race



MILDURA 18th & 19th May 1973

THE AUSTRALIAN UNIVERSITIES' ROWING CHAMPIONSHIPS

The Inter-Varsity Boat Race and Rowing Championships is one of the oldest established sporting events in this country.

The first Inter-Varsity boat race was held on December 20th, 1870, between fours representing Sydney and Melbourne Universities, over a three-and-a-half-mile course on the Yarra River. Apart from an event contested by representatives of the States of New South Wales and Victoria on the Parramatta River in 1863, there does not seem to have been any other race of interstate status prior to the 1870 Inter-Varsity. The race was won by Melbourne in 31 mins. 4 secs. The following year a Melbourne four again defeated Sydney, this time on the Parramatta course.

The race was not contested again until 1888, when eights representing Sydney, Melbourne and Adelaide Universities met on the Hambourg Reach course. Melbourne was first, with Adelaide second and Sydney third. Sydney, stroked by W.A. Conlon, recorded its first win in 1890, when it won from Melbourne on the Yarra River course. Adelaide, stroked by W.H. Gosse, won for the first time in 1896, defeating Sydney and Melbourne on the Yarra. The race has been rowed every year since 1888 except during the war years, 1915-1918 and 1941-1945. There was no race in 1965 either, following the picnic of 1964 when revelling oarsmen committed mutiny, piracy and other acts upon a Hobart ferry.

In 1896 a most appropriate trophy was provided for the race, when a group of old University "Blues" oarsmen in England presented what is now known as the Oxford and Cambridge Cup as a perpetual trophy to be competed for annually by the Australian Universities. The historic value of such a trophy makes it unique in the field of Australian sport.

Until 1920, only Sydney, Melbourne and Adelaide contested the race, but in this year Queensland sent to Melbourne a crew which finished third. In 1921 they came second, and won in 1922 and 1923. E.B. Freeman stroked both winning crews.

In 1924 Tasmania entered a crew, and in 1925 won the race from Sydney in Brisbane. R.A. Scott stroked the winning crew.

Western Australia competed for the first time in 1927, when a crew stroked by F.A. Williams won on the Nepean River course. This was the first occasion on which a crew had won on its first start since the original race in 1870; it was also the first occasion on which all six Australian Universities were represented; and in that same year the Sculling Championship was inaugurated.

In 1956 the University of New South Wales competed for the first time, and Monash entered in 1963. In that year also the Lightweight Fours Championship over 2000 metres was introduced, the event being won by Melbourne in the time of 7 mins. 20 secs.

In 1966 the Australian National University and Newcastle University were both represented, and in 1969 Latrobe entered for the first time.

This year Macquarie University will be represented in the eight-oared event for the first time.

The events in the Seventy-eighth Australian Universities Boat Race and Rowing Championships will be conducted on a new 2000 metre course on the Murray River at Mildura.

May we take this opportunity to extend a welcome to visiting oarsmen, and to wish all competitors in this year's Inter-Varsity the best of luck, and good rowing.

**78th AUSTRALIAN UNIVERSITIES ROWING
CHAMPIONSHIPS AND BOAT RACE
1973
MURRAY RIVER MILDURA**

OXFORD & CAMBRIDGE CUP

Present Holders: *MONASH UNIVERSITY*

THE CARLTON & UNITED GOBLETS

Present Holders: *SYDNEY UNIVERSITY*

SIR FRED J. SCHONELL CUP

Present Holders: *MELBOURNE UNIVERSITY*

THE W.D.&H.O. WILLS TROPHY

Present Holder: *E. HALE, Tasmania University*

RACE OFFICIALS

Referee:	J. W. Bradshaw, Esq.	Starter:	P. A. Cayzer, Esq.
Aligner:	N. F. Wilkinson, Esq.	Umpires:	R.R. Aitken, Esq. and D. H. Boykett, Esq.
Judges:	H.E. Hassall, Esq., B. Kilpatrick, Esq., D. McKay, Esq., F.G. Rickards, Esq., G.H. Talbot, Esq., R.J. Traeger, Esq.	Time Keepers:	F.G. Rickards, Esq. D.H. Boykett, Esq.
		Clerk of Scales:	J. W. Bradshaw, Esq.
		Despatch Steward:	Arthur Adams, Esq.
	Course Commentator:		Roger Wilson, Esq.

MELBOURNE UNIVERSITY BOAT CLUB OFFICIALS

Patrons	:	Dr. Clive Disher, C.B.E., E.D. W. Balcombe Griffiths, O.B.E., M.C., E.D.
President	:	G. H. Nicholson, Esq.
Captain	:	R. S. Zahara, Esq.
Vice-Captain:		A. G. Michelmore, Esq.
Hon. Secretary :		M. A. Feddersen, Esq.
Inter-Varsity Convenor	:	R. J. Stewart, Esq.

LIST OF UNIVERSITIES

1. ADELAIDE UNIVERSITY	—	White singlet, black "V" and crest.
2. AUSTRALIAN NATIONAL UNIVERSITY	—	White singlet, royal blue trim and horizontal band with crest.
3. FLINDERS UNIVERSITY	—	
4. LATROBE UNIVERSITY	—	Red with white lettering.
5. MACQUARIE UNIVERSITY	—	Green and white.
6. MELBOURNE UNIVERSITY	—	White singlet with crest.
7. MONASH UNIVERSITY	—	Light blue singlet with crest.
8. NEWCASTLE UNIVERSITY	—	Garnet and grey with crest.
9. UNIVERSITY OF N.S.W.	—	Black singlet with crest.
10. UNIVERSITY OF QUEENSLAND	—	Maroon singlet with badge.
11. SYDNEY UNIVERSITY	—	White singlet with blue and gold tie and crest.
12. UNIVERSITY OF TASMANIA	—	Gold with red facings.
13. UNIVERSITY OF WEST. AUSTRALIA	—	Dark green with yellow trim and

Mildura

The City of Mildura is situated on the River Murray in the North-Western part of Victoria and is approximately 340 miles from Melbourne.

Mildura is the focal point of the Mallee Region and is the centre of the great irrigation development which was the inspiration of the Chaffey Brothers in 1890.

Not only is Mildura one of the principal provincial Cities of Victoria but, situated at the border of South Australia and New South Wales, it is also the central point of the areas of those States which are so far removed from their own Capitals.

The fact that the River Murray is a boundary between the States has, in this particular area, been a unifying force rather than a means of division, for the whole of the economy of this part of Australia is bound up with the River.

The Intersarsity Regatta could not have been held if this were not so. The Shire of Wentworth in New South Wales has given magnificent co-operation with the City of Mildura to ensure that all details in connection with Intersarsity run smoothly.

The country surrounding Mildura, being exceedingly dry, comes within the classification of "desert"; the average rainfall in the local area is 10 inches annually, which becomes less and less the further one progresses away from the River.

However, through the process of irrigation there has been created a real oasis, which could truly be called the "fruit garden" of Australia, the centre of which, the City of Mildura, now stands as a living reminder of those early pioneers who were prepared to support their vision of the future with sheer hard labour and industry.

So, the City of Mildura was born; today, it is a place of some 14,500 people, but it also serves an immediate population beyond its own boundaries of a further 20,000 or so people.

Being so isolated from large cities and surrounded by desert, Mildura has, through sheer force of circumstances, been required to provide for itself all the amenities for comfortably pleasant living. This has been done in such great measure that it is a place where one really lives.

All aspects of life are catered for from the Arts Centre and Library to some of the best sporting facilities anywhere in country Australia.

Motels and hotels abound in this attractively laid out garden city and for the past three years letterheads have carried the wording "Premier Tourist City – By Award." This title was justly earned – the comments of an average of three quarter of a million visitors a year just can't be wrong.

78th Annual Australian Universities' Boat Race

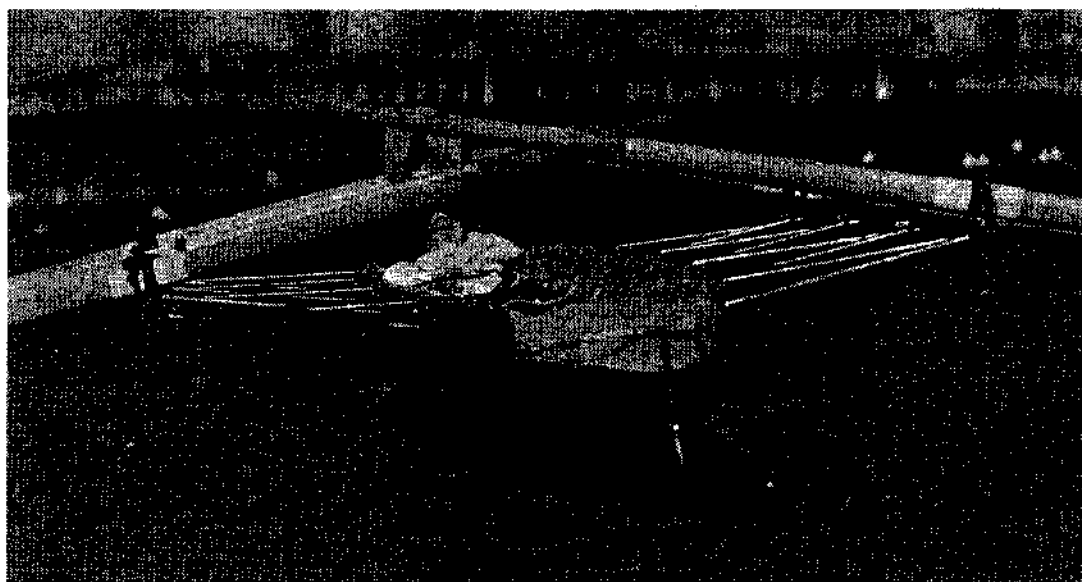
for the

Oxford and Cambridge Cup



ADELAIDE UNIVERSITY

Bow :	J. C. Paton	12.08
2 :	M. Hebblewhite	13.10
3 :	R. F. Elleway	13.12
4 :	F.S.P. Szuster	14.00
5 :	C. W. Lott	13.03
6 :	M. G. Page	14.01
7 :	D. D. Hatcher	12.07
Stroke :	B. J. Richardson	14.00
Cox :	A. F. Johnson	8.07
Coach :	Roger Moore Esq.	



AUSTRALIAN NATIONAL UNIVERSITY

Bow :	K. Postletwaite	12.11
2 :	C. Roberts	11.04
3 :	M. Body	13.00
4 :	D. Game	12.02
5 :	D. Walters	13.10
6 :	K. Currie	12.07
7 :	D. Munro	11.07
Stroke :	N. Cooper	12.06
Cox :	J. O'Brien	9.11
Coach :	B. Ninham Esq.	



UNFORTUNATELY NO PHOTOGRAPH WAS SUPPLIED

LATROBE UNIVERSITY

Bow	: P. Unwin	10.07
2	: J. Frearson	11.04
3	: G. Boxhall	10.11
4	: A. White	12.04
5	: D. Craig	13.07
6	: I. Knox	14.01
7	: P. Atkinson	13.01
Stroke	: J. Kettlewell	13.07
Cox	: S. Tulloh	8.07
Coach	: P. Royal Esq.	



MACQUARIE UNIVERSITY

Bow	: G. Buttres-Grove	11.00
2	: G. Cameron	12.00
3	: I. Robertson	11.00
4	: J. Clowes	14.00
5	: J. Sharp	14.07
6	: E. Dobbin	13.00
7	: J. McCann	13.00
Stroke	: P. Fox	13.07
Cox	: L. Kennedy	9.00
Coaches	: Tony Wimble Esq. Ron Bath Esq.	

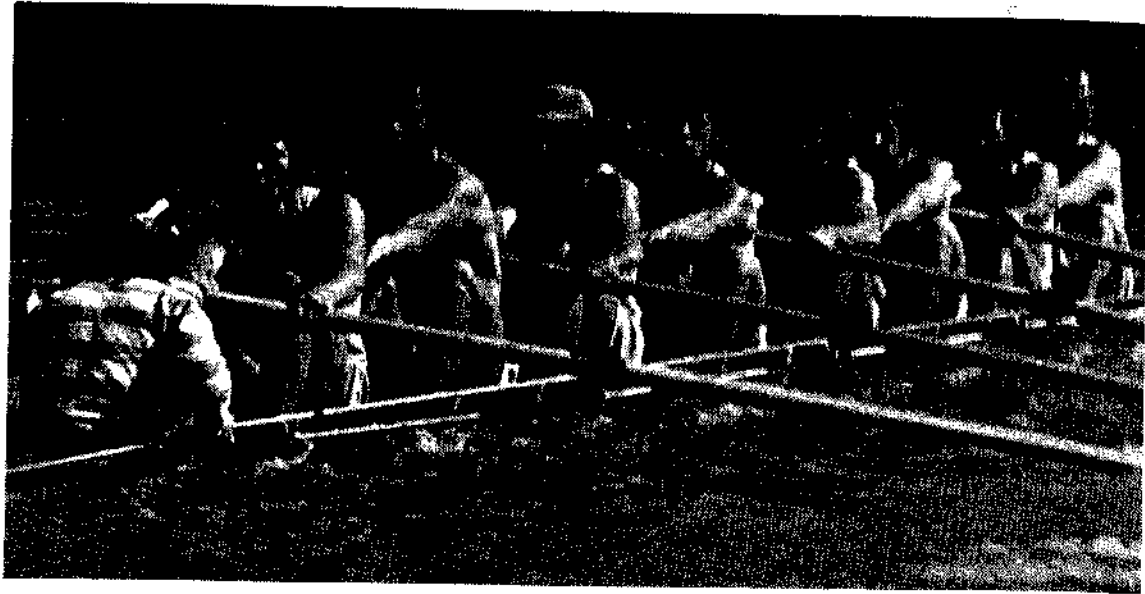


MELBOURNE UNIVERSITY

Bow	: I. L. Cochran	12.12
2	: K. R. Richardson	13.05
3	: M. C. Ross	14.08
4	: R. S. Zahara	13.02
5	: J. B. Shelton	15.02
6	: D. R. English	13.05
7	: R. P. Widmer	13.06
Stroke	: R. J. Atkinson	12.09
Cox	: P. J. Howman	8.09
Coach	: William Stokes Esq.	

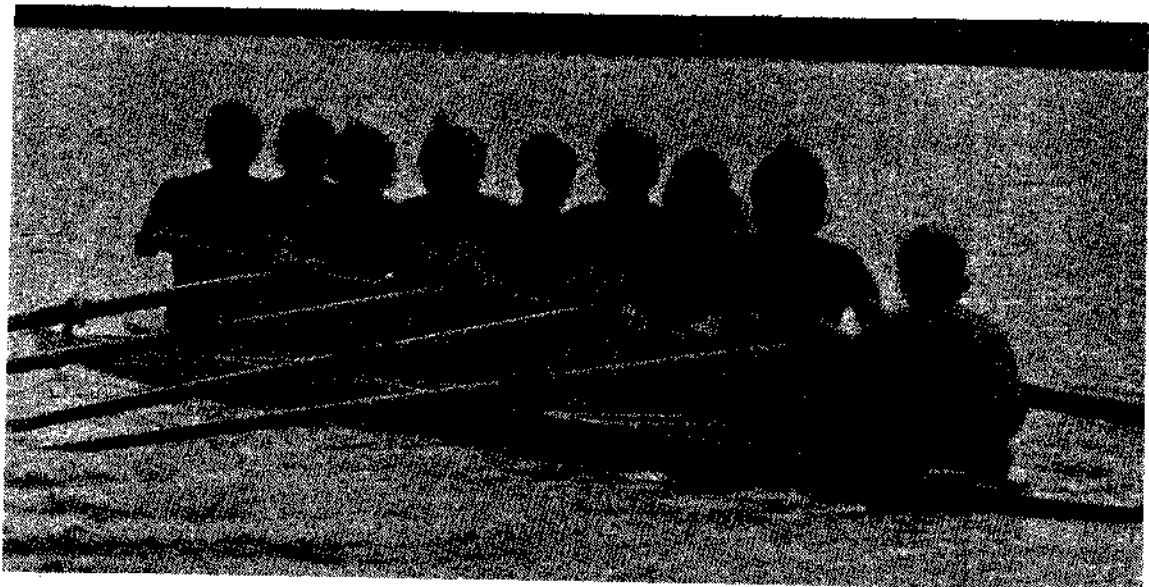
MONASH UNIVERSITY

w	: G. W. Green	13.00
2	: M. J. Kerin	12.04
3	: J. E. Bourke	13.07
4	: D. A. Worthley	12.10
5	: B. Romanin	15.00
6	: M. J. Stee	12.04
7	: J.G.L. McKeand	13.07
ke	: S. B. Jelbart	12.02
ox	: A. J. Hancock	8.09
ch	: J. H. Marshall Esq.	



NEWCASTLE UNIVERSITY

w	: A. Johnson	11.05
2	: B. Couper	11.06
3	: B. Yates	13.00
4	: P. Legge	13.00
5	: P. Comerford	12.10
6	: P. Muller	12.02
7	: T. Lotszczk	13.02
ce	: H. Umlauff	14.00
ox	:	
h	:	



UNIVERSITY OF N.S.W.

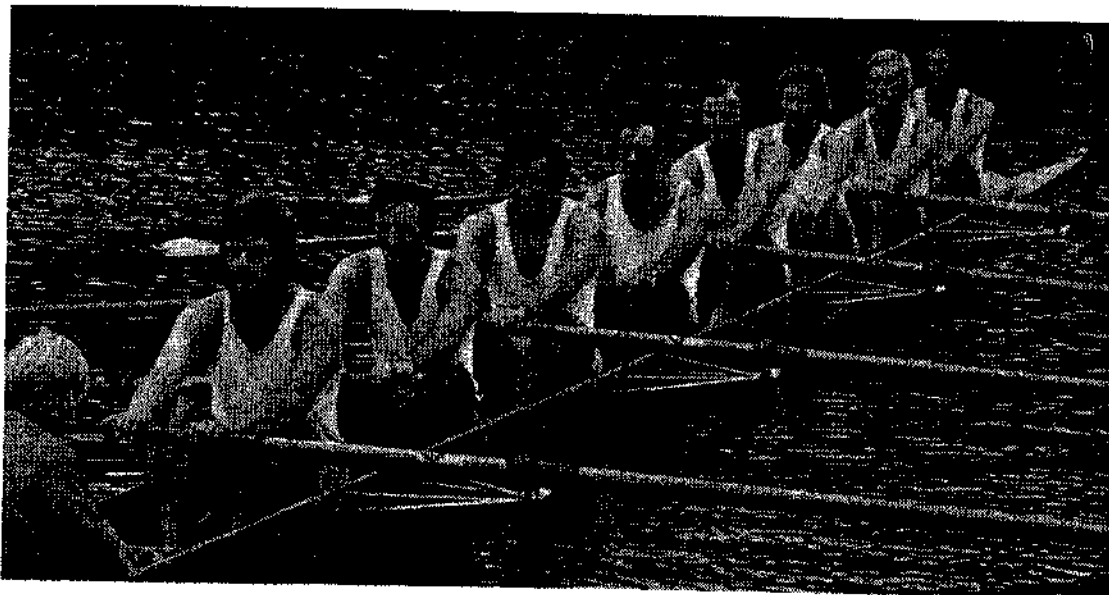
w	: P. Katz	12.07
2	: A. Horsley	12.02
3	: J. Taylor	13.00
4	: B. Weir	13.03
5	: J. Punshon	13.00
6	: R. Paver	13.07
7	: A. Lee	11.12
e	: P. Wilkinson	13.07
x	: J. Carlisle	9.00
h	:	





SYDNEY UNIVERSITY

Bow :	A. M. Curtain	13.0
2 :	A. R. Simson	13.0
3 :	D. E. Roberts	13.0
4 :	J. B. Siverwright	13.1
5 :	R. M. Redell	13.0
6 :	D. N. Burrell	14.0
7 :	S. C. Newnham	13.1
Stroke :	C. D. Shinnars	13.1
Cox :	T. O'Hanlon	8.0
Coach :	M. C. Grace Esq.	



TASMANIAN UNIVERSITY

Bow :	N. Bonner	
2 :	R. Castledene	
3 :	M. Powell	
4 :	I. Guest	
5 :	K. Braslin	
6 :	C. Henderson	
7 :	G. Hall	
Stroke :	S. Dean	
Cox :	C. Wojtas	
Coach :	J. Turner Esq.	



UNIVERSITY OF WESTERN AUSTRALIA

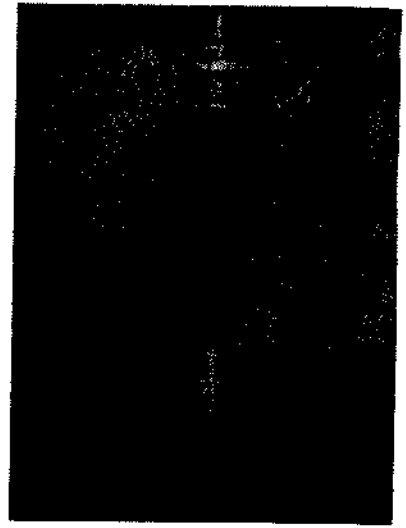
Bow :	G. Rudeforth	11.06
2 :	D. Ransom	12.01
3 :	J. Jecks	12.02
4 :	D. Bean	12.00
5 :	M. Scott	13.06
6 :	C. James	12.06
7 :	C. Curry	12.00
Stroke :	R. Fitzhardinge	13.02
Cox :	R. McLellan	8.07
Coach :	John Reddaway Esq.	

Lightweight Fours Championship

10th Annual Australian Universities'

for the

for Fred J. Schonell Cup



ADELAIDE UNIVERSITY

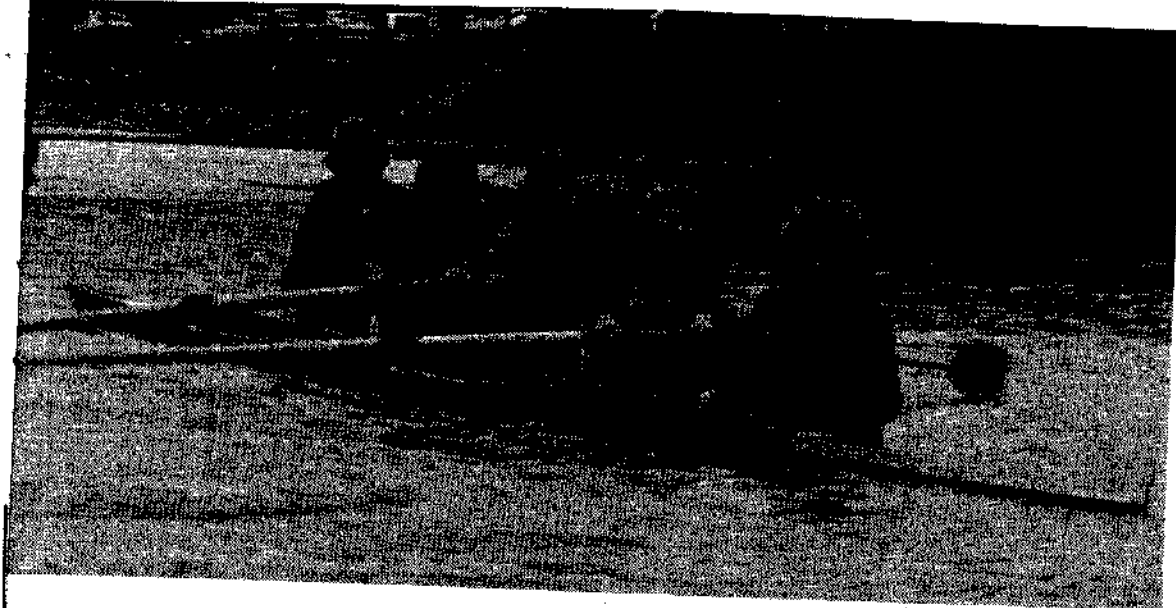
w	: G. P. McNeil	10.10
2	: W. S. Young	11.00
3	: N. J. Birdseye	10.08
e	: W. S. Moody	10.08
x	: J. Lemon	8.07
h	: Dean Clayton Esq.	



AUSTRALIAN NATIONAL UNIVERSITY

v	: P. Stolz	10.09
2	: N. Dwyer	10.13
3	: M. Callaghan	10.08
e	: P. Nevett	10.10
<	: M. Lamb	9.08
n	: B. Skinner Esq.	

UNFORTUNATELY NO PHOTOGRAPH WAS SUPPLIED



MELBOURNE UNIVERSITY

Bow : S. H. Tuck
 2 : D. R. Lord
 3 : F. D. Saccardo
 Stroke : M.C.B. Cox
 Cox : R. N. Brownlee
 Coach : Harvey Nicholson Esq



MONASH UNIVERSITY

Bow : T. J. Porter 11
 2 : J.A.C. Nevett 11
 3 : A. P. Williams 11
 Stroke : M. F. Owen 11
 Cox : O. Wells 8
 Coach : A. J. Smith Esq.



NEWCASTLE UNIVERSITY

Bow : T. Osborne 10
 2 : N. Ritchie 10
 3 : P. Bond 10
 Stroke : S. Hughes 10
 Cox :
 Coach :

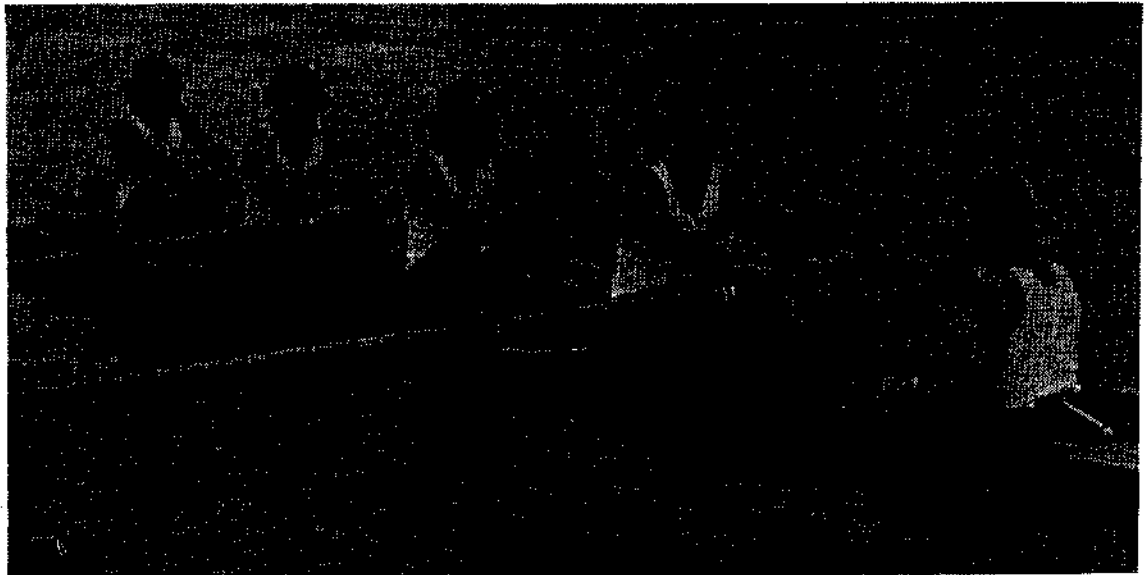
UNIVERSITY OF N.S.W.

w : G. Huggins 10.05
2 : J. Carpenter 10.06
3 : W. Klintworth 10.12
ce : P. Duncan 10.12
ix : D. Pascoe 9.05
h :



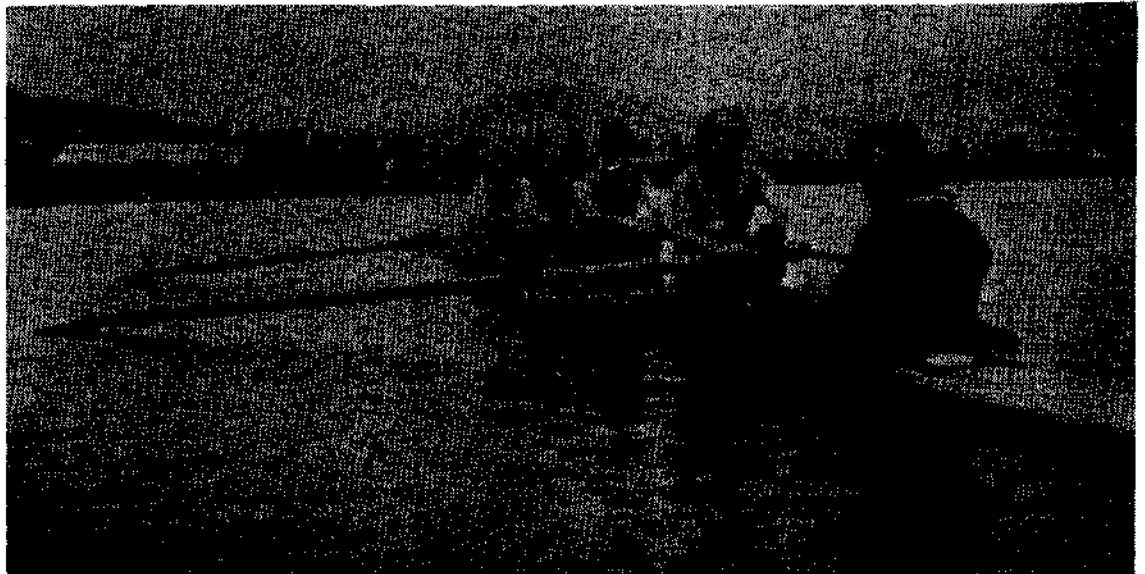
SYDNEY UNIVERSITY

w : D. Mitchell 10.06
2 : T. Vinson 10.10
3 : J. Mack 10.10
ce : H. Barrell 11.00
ix : D. Blomberg 8.07
rg : J. Mitchell 10.06
ch : I. MacDonald Esq.



TASMANIAN UNIVERSITY

w : J. Schouter
2 : R. Burn
3 : A. Edwards
ke : C. Shrosbree
ix : J. Burn
ch : A. Edwards Esq.



PROGRAMME

Friday 18th May, 1973

EVENT 1: THE CARLTON & UNITED GOBLET FOR COXWAINLESS PAIRS

10.30 a.m. Heat 1

		Place	Margin	Time
STATION 1	University of N.S.W.			
STATION 2	Sydney University			
STATION 3	University of W.A.			
STATION 4	Monash University			

10.45 a.m. Heat 2

		Place	Margin	Time
STATION 1	Adelaide University			
STATION 2	Flinders University			
STATION 3	Melbourne University			
STATION 4	Queensland University			

EVENT 2: W. D. & H. O. WILLS TROPHY FOR SCULLS

11.00 a.m. Heat 1

		Place	Margin	Time
STATION 1	University of W.A.			
STATION 2	University of N.S.W.			
STATION 3	Sydney University			
STATION 4	Adelaide University			
STATION 5	Latrobe University			

11.15 a.m. Heat 2

		Place	Margin	Time
STATION 1	University of Tasmania			
STATION 2	Flinders University			
STATION 3	Melbourne University			
STATION 4	Monash University			

EVENT 3: SIR FRED J. SCHONELL CUP FOR LIGHTWEIGHT FOURS

11.30 a.m. Heat 1

		Place	Margin	Time
STATION 1	University of N.S.W.	2	7.5 sec	
STATION 2	University of Tasmania	3	1.9 sec	
STATION 3	Australian National University	4		
STATION 4	Adelaide University	1	11 sec	6m. 16.5 sec

11.45 a.m. Heat 2

		Place	Margin	Time
STATION 1	Melbourne University	1	16 sec	6m. 16 sec
STATION 2	Monash University	3	4.25 sec	
STATION 3	Newcastle University	2	5 sec	
STATION 4	Sydney University	4		

EVENT 4: OXFORD & CAMBRIDGE CUP FOR EIGHTS

12.00 noon Heat 1

		Place	Margin	Time
STATION 1	Sydney University
STATION 2	University of W.A.
STATION 3	Newcastle University
STATION 4	Australian National University
STATION 5	University of N.S.W.
STATION 6	Macquarie University

12.15 p.m. Heat 2

		Place	Margin	Time
STATION 1	Adelaide University
STATION 2	Monash University
STATION 3	Melbourne University
STATION 4	University of Tasmania
STATION 5	Latrobe University

In all events the first and second placings in each heat shall proceed direct to the finals with the remaining crews going into the repechages.

12.30 p.m.: Draw for stations in the repechages, at the Mildura Life Saving Club (Finish).

— INTERVAL —

EVENT 5: THE CARLTON & UNITED GOBLET FOR COXWAINLESS PAIRS

3.00 p.m. Repechage

		Place	Margin	Time
STATION 1
STATION 2
STATION 3
STATION 4
STATION 5
STATION 6

EVENT 6: W. D. & H. G. WILLS TROPHY FOR SCULLS

3.15 p.m. Repechage

		Place	Margin	Time
STATION 1
STATION 2
STATION 3
STATION 4
STATION 5
STATION 6

EVENT 7: SIR FRED J. SCHONELL CUP FOR LIGHTWEIGHT FOURS

3.30 p.m. Repechage

		Place	Margin	Time
STATION 1
STATION 2
STATION 3
STATION 4
STATION 5
STATION 6

EVENT 8: OXFORD & CAMBRIDGE CUP FOR EIGHTS

3.45 p.m. Repechage 1

	Place	Margin	Time
STATION 1
STATION 2
STATION 3
STATION 4
STATION 5
STATION 6

4.00 p.m. Repechage 2

	Place	Margin	Time
STATION 1
STATION 2
STATION 3
STATION 4
STATION 5
STATION 6

The first and second placings in each repechage shall proceed to the final, except in Event 8, when only the first placing shall proceed to the final from each repechage. The remaining crews will proceed to the petite final in their respective event.

4.30 p.m.: Draw for stations in the finals, at the Mildura Life Saving Club (Finish.)

Saturday 19th May, 1973

EVENT 1: THE CARLTON & UNITED GOBLET FOR COXWAINLESS PAIRS

2.00 p.m. Petite Final

	Place	Margin	Time
STATION 1
STATION 2
STATION 3
STATION 4
STATION 5
STATION 6

EVENT 2: W. D. & H. O. WILLS TROPHY FOR SCULLS

2.15 p.m. Petite Final

	Place	Margin	Time
STATION 1
STATION 2
STATION 3
STATION 4
STATION 5
STATION 6

EVENT 3: SIR FRED J. SCHONELL CUP FOR LIGHTWEIGHT FOURS

2.30 p.m. Petite Final

	Place	Margin	Time
STATION 1
STATION 2
STATION 3
STATION 4
STATION 5
STATION 6

EVENT 4: OXFORD & CAMBRIDGE CUP FOR EIGHTS

2.45 p.m. Petite Final

	Place	Margin	Time
STATION 1			
STATION 2			
STATION 3			
STATION 4			
STATION 5			
STATION 6			

EVENT 5: THE CARLTON & UNITED GOBLET FOR COXWAINLESS PAIRS

3.00 p.m. Final

	Place	Margin	Time
STATION 1 .. Melbourne	1	6.2 sec	6m. 36.4 sec
STATION 2 .. Queensland	3	20.2 sec	
STATION 3 .. Monash	2	2.2 sec	
STATION 4 .. N.S.W.	4		
STATION 5			
STATION 6			

EVENT 6: W. D. & H. O. WILLS TROPHY FOR SCULLS

3.15 p.m. Final

	Place	Margin	Time
STATION 1 .. W.A.	2		
STATION 2 .. Monash	3		
STATION 3 .. Sydney	1		6m. 37.4 sec
STATION 4			
STATION 5			
STATION 6			

EVENT 7: SIR FRED J. SCHONELL CUP FOR LIGHTWEIGHT FOURS

3.30 p.m. Final

	Place	Margin	Time
STATION 1			
STATION 2			
STATION 3			
STATION 4			
STATION 5			
STATION 6			

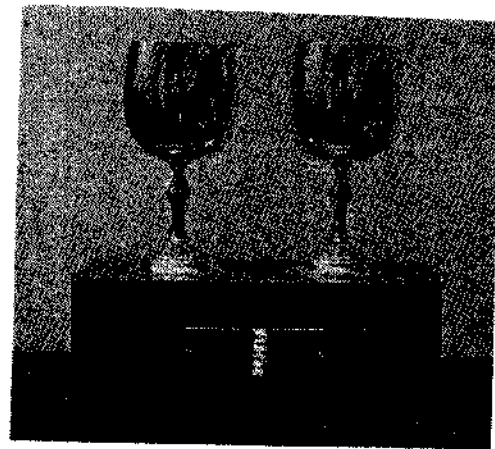
EVENT 8: OXFORD & CAMBRIDGE CUP FOR EIGHTS

3.45 p.m. Final

	Place	Margin	Time
STATION 1			
STATION 2			
STATION 3			
STATION 4			
STATION 5			
STATION 6			

At the conclusion of the Championships the Challenge Cups and Trophies will be presented to the winning Crews and Sculler by His Excellency Major-General Sir Rohan Delacombe, K.C.M.G., K.C.V.O., K.B.E., C.B., D.S.O., K.St.J., Governor of Victoria.

5th Annual Australian Universities' Coxwainless Pairs Championship for the Carlton & United Goblets



ADELAIDE UNIVERSITY

Bow : J. Parker 13.01
Stroke : A. Hardy 12.07
Coach :

MELBOURNE UNIVERSITY

Bow : A. G. Michelmore 11.05
Stroke : G. Rees 11.00

UNIVERSITY OF N.S.W.

Bow : S. Willard 13.01
Stroke : A. Fairbairn 13.00
Coach :

FLINDERS UNIVERSITY

Bow : M. Higgs 12.09
Stroke : D. Fotheringham 12.12
Emerg : D. Young
Coach :



MONASH UNIVERSITY

Bow : I. D. Holyman 12.10
Stroke : J. H. Yuncken 12.06
Coach : D. B. Bishop Esq.

QUEENSLAND UNIVERSITY

Bow : W. S. Bewg 13.00
Stroke : R. J. Conrad 12.12
Coach : R. Bushell, Esq.



SYDNEY UNIVERSITY

Bow : E. F. Carter 12.02
Stroke : M. E. Ritchie 14.04
Coach : J. Salvage Esq.

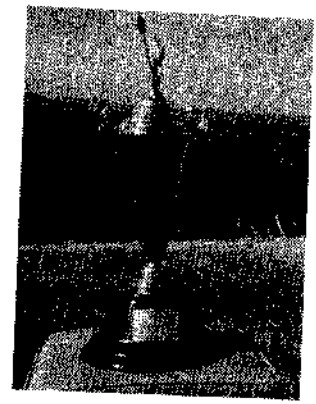


UNIVERSITY OF WESTERN AUSTRALIA

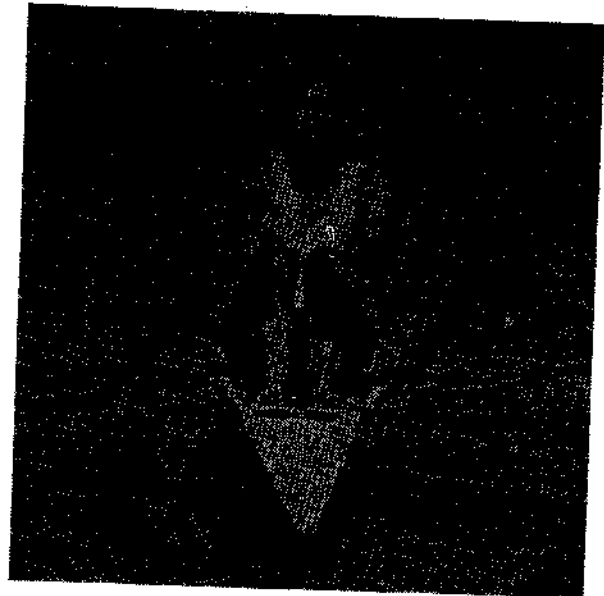
Bow : R. Cooper 12.07
Stroke : A. Wilkins 13.02
Coach :



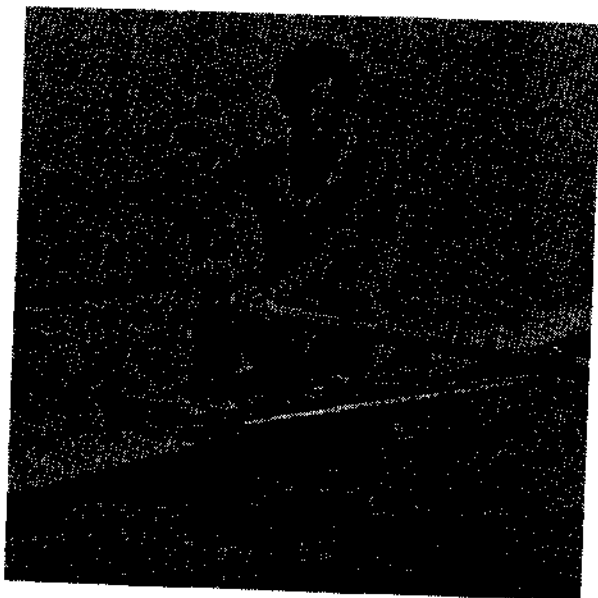
23rd Annual Australian Universities Sculling Championship for the W.D. & H.O. Wills Trophy



ADELAIDE UNIVERSITY
N. White 12.08



UNIVERSITY OF WESTERN AUSTRALIA
G. Larkins 12.07



SYDNEY UNIVERSITY
I. R. Lee 13.07
Coach : George Cook Esq.

FLINDERS UNIVERSITY
H. E. Mitchell 13.12

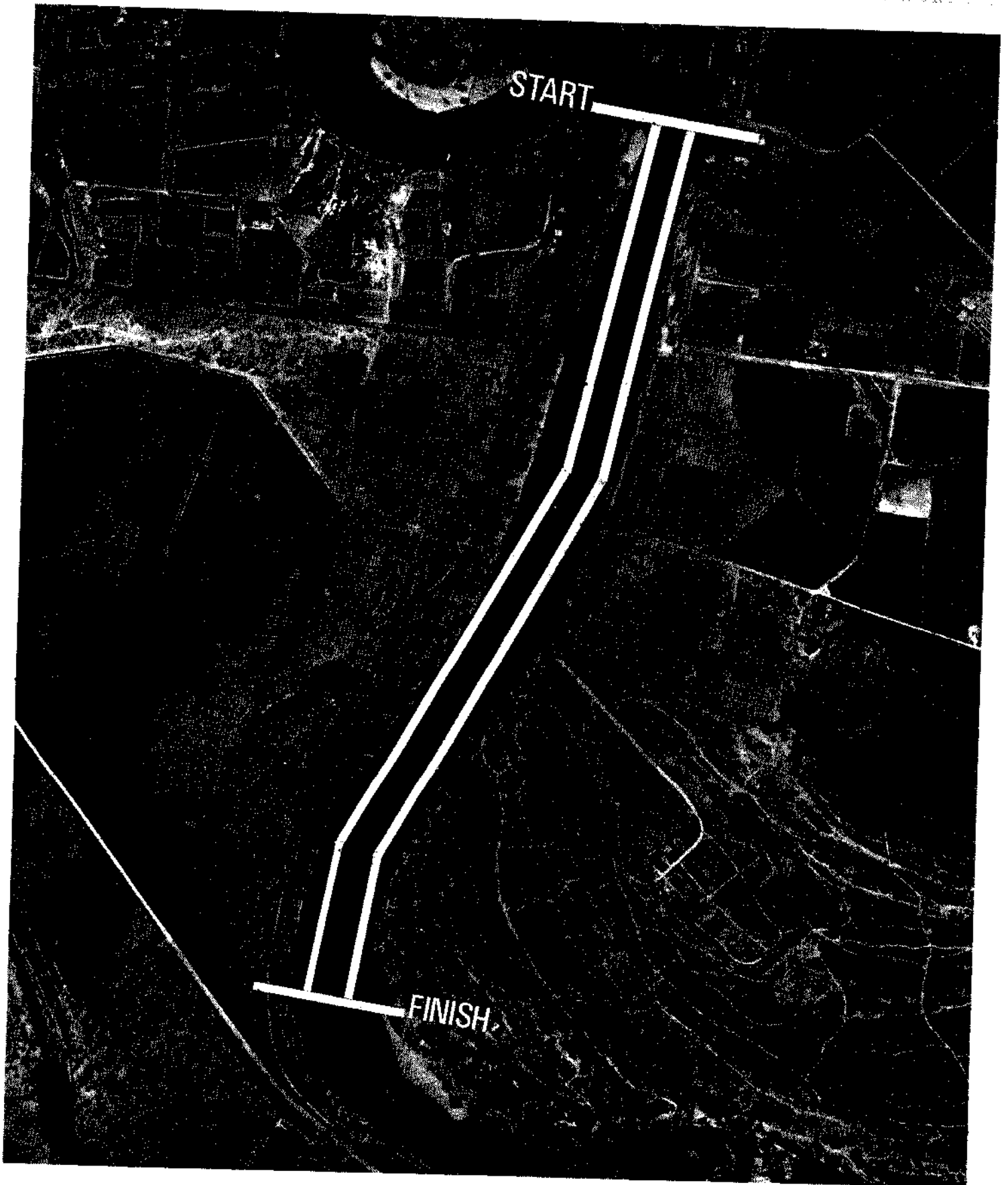
MELBOURNE UNIVERSITY
I. G. Farran 13.06

TASMANIA UNIVERSITY
E. Hale 13.10

LATROBE UNIVERSITY
N. Newton 11.07

MONASH UNIVERSITY
D. Worthley 13.02

UNIVERSITY OF N.S.W.
M. Richardson 12.07



ACKNOWLEDGEMENTS

The Melbourne University Boat Club expresses its appreciation to the following :

The Regatta Officials
Carey Baptist Grammar School
Scotch College
Xavier College
Mildura Rowing Club
Mercantile Rowing Club
Power House Rowing Club
Yarra Yarra Rowing Club
Ormond College
Ansett Transport Industries
Carlton & United Breweries Ltd.
Reef Marine
Renwick Pride Pty. Ltd. - Printers
Stokes Australasia Ltd.
Wilmac Distributors - Video Tape Equipment
Mildura City Council
Wentworth Shire Council

RESULTS 1870..1970

Early Races

Year	Course	Winner	Time	Margin
1870	Yarra, Vic.	Melbourne..	31.4	Four oar
1871	Parramatta, N.S.W.	Melbourne..	27.25	Four oar
1888	Yarra, Vic.	Melbourne..	13.5	4 lengths (2 miles)
1889	Port Adelaide, S.A.	Adelaide	16.8½	3 lengths (2½ miles against wind and tide)
1890	Yarra, Vic.	Sydney	14.48¼	5 lengths (2½ miles)
1891	Parramatta, N.S.W.	Sydney	17.21	4 lengths
1892	Port Adelaide, S.A.	Melbourne..	17.21	6 feet
1893	Yarra, Vic.	Melbourne..	16.5	2½ lengths
1894	Parramatta, N.S.W.	Sydney	17.0	10 lengths
1895	Port Adelaide	Sydney	15.45	6 lengths

The Oxford and Cambridge Cup for VIII's

1896	Yarra, Vic.	Adelaide	20.41	6 lengths (strong headwind)
1897	Parramatta, N.S.W.	Sydney	18.8	4 lengths
1898	Port Adelaide, S.A.	Sydney	18.6½	6 lengths
1899	Yarra, Vic.	Melbourne..	23.2½	5 lengths (strong headwind)
1900	Parramatta, N.S.W.	Sydney	17.1	
1901	Yarra, Vic.	Sydney	16.48	½ length
1902	Port Adelaide, S.A.	Melbourne..	16.44	3 lengths
1903	Parramatta, N.S.W.	Sydney	15.36	5 lengths
1904	Yarra, Vic.	Melbourne..	18.1-4/5	3 lengths
1905	Port Adelaide, S.A.	Sydney	17.37	5 lengths
1906	Parramatta, N.S.W.	Melbourne..	15.15	3 lengths (just under 3 miles)
1907	Yarra, Vic.	Sydney	15.53	2 lengths
1908	Port Adelaide, S.A.	Sydney	15.45	2 lengths
1909	Parramatta, N.S.W.	Sydney	15.50	5 lengths
1910	Yarra, Vic.	Adelaide	17.35	4 lengths (2½ miles against wind and tide)
1911	Port Adelaide, S.A.	Melbourne..	16.29	1½ lengths
1912	Parramatta, N.S.W.	Melbourne..	17.0	3 lengths
1913	Yarra, Vic.	Melbourne..	15.11-3/5	6 lengths (2½ miles)
1914	Port Adelaide, S.A.	Melbourne..	17.46-2/5	7 lengths
1915-18	No race on account of Great War.			
1919	Parramatta, N.S.W.	Melbourne..	19.34¼	3 lengths (3 miles and 167 yards)
1920	Yarra, Vic.	Adelaide	16.15	1½ lengths (2½ miles)
1921	Brisbane, Q.	Melbourne..	17.25	1 length
1922	Port Adelaide, S.A.	Queensland.	-----	1½ lengths
1923	Parramatta, N.S.W.	Queensland.	17.43-1/5	4 lengths
1924	Yarra, Vic.	Melbourne..	16.14	½ length (2½ miles)
1925	Brisbane, Q.	Tasmania	17.56	2½ lengths
1926	Huon, Tas.	Sydney	-----	½ length
1927	Nepean, N.S.W.	W.A.	17.30	1½ lengths
1928	Murray, S.A.	W.A.	16.43	2 lengths
1929	Yarra, Vic.	Melbourne..	14.27-1/5	2½ lengths (2½ miles)
1930	Swan, W.A.	W.A.	19.57-3/5	¾ length
1931	Brisbane (H.R.), Q.	Sydney	17.40	9½ lengths
1932	Huon, Tas.	W.A.	17.19½	5 lengths
1933	Nepean, N.S.W.	Sydney	16.29	2 lengths
1934	Mannum, S.A.	Adelaide	15.30	5 lengths
1935	Yarra, Vic.	Sydney	15.17	2 lengths (2½ miles)
1936	Swan, W.A.	Sydney	12.30-2/5	2 lengths (2 miles)
1937	Brisbane (H.R.), Q.	Sydney	17.30-2/5	2½ lengths (3 miles)
1938	Huon, Tas.	Sydney	15.44	1½ lengths
1939	Nepean, N.S.W.	Melbourne..	16.38	1½ lengths
1940	Nepean, N.S.W.	Melbourne..	16.57	3-4 lengths
1946	Murray, S.A.	Melbourne..	-----	1 length
1947	Nepean, N.S.W.	Sydney	16.51	1½ lengths
1948	Swan, W.A.	Sydney	12.11	(2 miles)
1949	Brisbane (H.R.), Q.	Sydney	11.45	2 lengths (2 miles)
1950	Yarra, Vic.	Melbourne..	10.50-1/5	3 lengths (2 miles)
1951	Huon, Tas.	Melbourne & Sydney	14.46	Fast conditions
1952	Murray, S.A.	Melbourne..	17.12	2 lengths
1953	Nepean, N.S.W.	Melbourne..	16.13	1/3 length
1954	Swan, W.A.	Melbourne..	11.38	1½ lengths (2 miles)
1955	Brisbane (H.R.), Q.	Melbourne..	17.54½	8 lengths
1956	Yarra, Vic.	Melbourne..	13.7	4 lengths (2½ miles)
1957	Derwent, Tas.	Melbourne..	15.31	2 lengths
1958	Port R. S.A.	Queensland.	17.48	4 lengths
1959	Nepean, N.S.W.	Queensland.	16.5½	½ length
1960	Swan, W.A.	Sydney	10.21-4/5	2 lengths (2 miles - less 126 yds.)
1961	Brisbane, Q.	Sydney	11.5	4 lengths (2 miles)

1962	Nepean, N.S.W.	Sydney	15.30	¾ length
1963	Yarra, Vic.	Melbourne	12.14-1/5	4 lengths (2½ miles)
1964	Franklin, Tas.	Sydney	15.39	1½ lengths
1965	No Contest			
1966	Mannum, S.A.	Tasmania	16.10	2 lengths
1967	Nepean, N.S.W.	Melbourne	15.59	¾ length
1968	Canning, W.A.	Melbourne	10.53	0.5 second (2 miles)
1969	Lake Wendouree	Melbourne	6.26.9	1 length (2000 metres)
1970	Lake Burley Griffin	Melbourne	6.28.9	1½ lengths
1971	Lake Kurwongbah, Qld.	Monash	6.35	0.1 sec.
1972	Manning N.S.W.	Monash	7.33	1.25 lengths

Summary of wins -

Melbourne	76 starts	32.5 wins
Sydney	76 starts	27.5 wins
Adelaide	62 starts	5 wins
Western Australia	31 starts	4 wins
Queensland	38 starts	4 wins
Monash	9 starts	2 wins
Tasmania	26 starts	2 wins
N.S.W.	16 starts	
A.N.U.	6 starts	
Newcastle	4 starts	
Latrobe	3 starts	

Sir Fred J. Schonell Cup for Lightweight IV's

Year	Course	Winner	Time	Margin
1963	Yarra, Vic.	Melbourne	7.20	4 lengths
1964	Franklin, Tas.	Melbourne	6.49	3 lengths
1965	No Contest			
1966	Mannum, S.A.	Adelaide	6.58	1 length
1967	Nepean, N.S.W.	Melbourne	7.16	½ length
1968	Canning, W.A.	Sydney	6.53	0.5 second
1969	Lake Wendouree	Melbourne	7.14	3 lengths
1970	Lake Burley Griffin	Melbourne	7.17.8	2½ lengths
1971	Lake Kurwongbah, Qld.	Melbourne	7.45	2.7 secs.
1972	Manning, N.S.W.	Melbourne	8.50.5	Easily

Australian Universities' Sculling Championship

Year	Course	Winner	Second	Margin
1927	Penrith, N.S.W.	K.A. Flavelle, Sydney	S.R. Bell, Melbourne	1½ lengths
1928	Mannum, S.A.	K.A. Flavelle, Sydney	Row over	
1929	Melbourne, Vic.	K.A. Flavelle, Sydney	A. Crothers, Melbourne	10 lengths
1930-	No race.			
1937	Brisbane, Q.	R. Reid, Queensland	Row over	
1938-	No race.			
1952	Murray, S.A.	B. Sundstrap, Sydney	P. Royce, S.A.	
1953	Nepean, N.S.W.	J. Hunt, Melbourne		
1954	Swan, W.A.	B. Adams, Sydney	E. Masien, W.A.	
1957	Derwent, Tas.	B. Ninham, W.A.	L.P. Roberts, Sydney	
1958	Port R., S.A.	W. Hatfield, N.S.W.	J. Mulcahy, Melbourne	
1959	Nepean, N.S.W.	W. Hatfield, N.S.W.	J. Hazard, Q.	16 lengths
1960	Swan, W.A.	M. Wignall, Sydney	D. Durston, W.A.	
1961	Brisbane, Q.	R. Trousselot, Tas.	W. Hatfield, N.S.W.	
1962	Nepean, N.S.W.	D. Walker, W.A.	W. Hatfield, N.S.W.	2 feet
1963	Yarra, Vic.	A. Skinner, Sydney	P.R. Messenger, Melbourne	4 lengths
1964	Franklin, Tas.	J. Bennett, Queensland	J. Yuille, W.A.	
1965	No contest.			
1966	Mannum, S.A.	P.H. Hoban, Monash	M.J. Reynolds, Queensland	20 lengths
1967	Nepean, N.S.W.	R.M. Reddel, Sydney	K.P. Jelbart, Aust. Nat.	4 lengths
1968	Canning, W.A.	M.J. Reynolds, Queensland	I.R. Lec, Sydney	15.5 seconds
1969	Lake Wendouree	M.J. Reynolds, Queensland	R.M. Reddel, Sydney	7 lengths
1970	Lake Burley Griffin	R.M. Reddel, Sydney	P. Hoban, N.S.W.	2½ lengths
1971	Lake Kurwongbah, Qld.	T. Hale, Tas.	I. Lec, Sydney	8.3 secs.
1972	Manning, N.S.W.	T. Hale, Tas.	P. Hoban, N.S.W.	Easily

Carlton & United Goblets for Cox'less Pairs

1969	Lake Wendouree	Melbourne	7.53.1	1½ lengths
1970	Lake Burley Griffin	Melbourne	7.57.5	3 lengths
1971	Lake Kurwongbah, Qld.	Melbourne	8.18	16.6 secs.
1972	Manning, N.S.W.	Sydney	9.57.5	Easily

Strokes

Early Fours Races

SYDNEY:
MELBOURNE:

1870 A. Yeomans
1870 *T.C. Hope

1871 C.H. Fitzhardinge
1871 *T. Coles

Eights

Sydney	Melbourne	Adelaide	Queensland
1888 E.H. Wilkinson	1888 *S. McCulloch	1888 A.P. Cox	1920 T.J. Bale
1889 Not represented	1889 C.H. Chomley	1889 *R. Cruickshank	1921 E.B. Cullen
1890 *W.A. Conlon	1890 J.G. McKay	1890 Not represented	1922 *E.B. Freeman
1891 *R.F.deB. Lopez	1891 T. Crosthwaite	1891 W.R. Bayly	1923 *E.B. Freeman
1892 R.W. Thomas	1892 *A.R. Morrison	1892 W.R. Bayly	1924 E.B. Freeman
1893 C.H. Helsham	1893 *A.R. Morrison	1893 W.R. Bayly	1925 T.E. Collins
1894 *C.H. Helsham	1894 D.C. Moddison	1894 Not represented	1926 Not represented
1895 *M.C. Chubb	1895 H.A.C. Irving	1895 W.H. Gosse	1927 T.E. Collins
1896 A.G. Purves	1896 H.E. Bullivant	1896 *W.H. Gosse	1928 T.R. Groom
1897 *G.A. Vivers	1897 H.E. Bullivant	1897 W.H. Gosse	1929 J.P. McGrath
1898 *R.P. Hickson	1898 P.C. Hunt	1898 J.D. Connor	1930 Not represented
1899 H.J. Gould	1899 *W.H. Gosse	1899 Not represented	1931 P.C. Lahey
1900 *H.J. Gould	1900 Not represented	1900 J.C. Connor	1932 J.R.A. Walker
1901 *H.O. Lethbridge	1901 H.J. Whiting	1901 Not represented	1933 R.W. McGhie
1902 H.O. Lethbridge	1902 *H.J. Whiting	1902 C.T. Hargrave	1934 Not represented
1903 *V. McDowell	1903 H.J. Whiting	1903 J.R. Muirhead	1935 K. Bradfield
1904 V.V. Nathan	1904 *H.J. Whiting	1904 C.L. Jessop	1936 Not represented
1905 *A. Morrison	1905 H.J. Whiting	1905 J.R. Fullarton	1937 D.C. O'Beirne
1906 A. Morrison	1906 *H.J. Whiting	1906 J.R. Fullarton	1938 S. Hawgood
1907 *A. Morrison	1907 A.G. Greenham	1907 C.A. Hamilton	1939 D.C. O'Beirne
1908 *T.S. Dixon	1908 S. Fraser	1908 C.A. Hamilton	1940 D.McL. Clouston
1909 *T.S. Dixon	1909 F.A.H. Boynton	1909 C.A. Hamilton	1941 Not represented
1910 C.N. Douglas	1910 F.A.H. Boynton	1910 *A.L. Kennedy	1942 P. Taylor
1911 A.J. Robson	1911 *C.S. Steele	1911 A.L. Kennedy	1943 P.A. Taylor
1912 A.T. Cunningham	1912 *F.H. Moran	1912 C.L. Abbott	1944 Not represented
1913 B.G. Wade	1913 *H.C. Disher	1913 D. Yates	1945 B. Jones
1914 E.A. Woodward	1914 *H.C. Disher	1914 D. Yates	1946 D.S. Kronfeld
1919 T.M. Barnett	1919 *A. Spowers	1919 Not represented	1947 D.S. Kronfeld
1920 T.M. Barnett	1920 F.H. Hadley	1920 *E. Coombes	1948 Not represented
1921 J.C. Wallace	1921 *J.M. Buchanan	1921 R.L. Naylor	1949 D.S. Kronfeld
1922 L.O. Rutherford	1922 J.M. Buchanan	1922 L.C. Maiden	1950 N. Thomas
1923 P.C. Golding	1923 K.H. Hadley	1923 L.C. Maiden	1951 L.G. Andrews
1924 S.G.O. Martin	1924 *R.H. Keon-Cohen	1924 L.C. Maiden	1952 *L.G. Andrews
1925 R.N. McCulloch	1925 R.H. Keon-Cohen	1925 Not represented	1953 *L.G. Andrews
1926 *R.N. McCulloch	1926 B.T. Keon-Cohen	1926 W.M. Morgan	1954 *L.G. Andrews
1927 R.B. Brown	1927 A.R.M. Johnson	1927 W.M. Morgan	1955 J. Job
1928 R.B. Brown	1928 A.R.M. Johnson	1928 W.M. Morgan	1956 J. Adam
1929 R.B. Brown	1929 *W. Sherlock	1929 W.M. Morgan	1957 L.J. Warren
1930 H.W. Sneddon	1930 J.R. Adam	1930 R.B. Knight	1958 L. Warren
1931 *J.C. Loxton	1931 A.W. Oakley	1931 Not represented	1959 J. Lyndon
1932 H.D. Raffan	1932 L.L.O. Bevan	1932 J.R. Goode	1960 I. Revie
1933 *H.D. Raffan	1933 E.D. Scott	1933 A.C. Douglas	1961 Not represented
1934 I.G. Espin	1934 K.F. Cole	1934 *A.C. Douglas	1962 Not represented
1935 *H.K. Dettman	1935 C.P. Sherwood	1935 T.R. Goode	1963 J.G. Ricketts
1936 *H.K. Dettman	1936 D.R. Cameron	1936 Not represented	1964 J.G. Ricketts
1937 *S.E. Finlay	1937 B.B. Sloan	1937 J.A. Smeaton	1965 R. Townsend
1938 *L.W. Middleton	1938 C.D. Smith	1938 Not represented	1966 A. McDonald
1939 W.A. Pringle	1939 *C.D. Smith	1939 L.S. Bonnin	
1940 R.C. Opie	1940 *C.D. Smith	1940 I.H. Hobbs	
1946 A.G. Robson	1946 *C.D. Smith	1941 K. Fuller	
1947 *A.G. Robson	1947 C.D. Smith	1942 Not represented	
1948 *A. Brown	1948 I.C. Everist	1943 Not represented	
1949 *D. Rourke	1949 I.C. Everist	1944 Not represented	
1950 D. Rourke	1950 *I.C. Everist	1945 H. Cook	
1951 *E.G.F. Cowderry	1951 *J.S. Edwards	1946 H. Cook	
1952 B. Northam	1952 *P.N. Everist	1947 J. Tassie	
1953 D.G. Lane	1953 *P.N. Everist	1948 W. Fotheringham	
1954 J. Kennaway	1954 *C.J. Smith	1949 J.S. Jose	
1955 M.A. Minns	1955 *C.J. Smith	1950 Not represented	
1956 H.M. Canvin	1956 *I.E. Douglas	1951 R.C. Gill	
1957 D.J. Goode	1957 *J.M. Jelbart	1952 P. Humble	
1958 E.J. Rowland	1958 J.R. Colville	1953 P. Bishop	
1959 E.J. Rowland	1959 J.M. Jelbart	1954 D. Sarah	
1960 *K. Hall-Johnston	1960 N.C. Courtney	1955 R.D. Cheesman	
1961 *D. Lynch	1961 D.R. Messenger	1956 P. Humble	
1962 *D.P. Lynch	1962 C.S. Keon-Cohen	1957 R. Benny	
1963 C.F. Moore	1963 *C.S. Keon-Cohen	1958 A.L. Southcott	
1964 *P. Harris	1964 C.S. Keon-Cohen	1959 D.A. Pritchard	
1966 P. Bookallil	1966 P.L. Renouf	1960 B.P. Southcott	
1967 P. Harris	1967 *B.A. Keon-Cohen	1961 B.P. Southcott	
1968 K.A. Wharton	1968 *A.K. Ferguson	1962 H.N. Jeffries	
1969 R.F.P. Pigott	1969 *A.K. Ferguson	1963 I. Munro	
1970 R.B. Hampshire	1970 *I.G. Farran	1964 M. Jeffries	
1971 A.M. Curtin	1971 I.G. Farran	1965 T.D.H. Marshall	
1972 C.D. Shinnars	1972 S. Swaney	1966 D. Hatcher	

TASMANIA
 1924 J.D.L. Hood
 1925 *R.A. Scott
 1926 D.McD. Urquhart
 1927 D.McD. Urquhart
 1928 R.A. Scott
 1929 S. Darling
 1930 Not represented
 1931 Not represented
 1932 E.R. Clive
 1933 J. Klug
 1934 Not represented
 1935 J.S. Davis
 1939 Not represented
 1937 J.S. Davis
 1938 J.S. Davis
 1939 Not represented
 1946 Not represented
 1947 Not represented
 1948 Not represented
 1949 D. Sutton
 1950 I. Virtue
 1951 R. Boniwell
 1952 Not represented
 1953 Not represented
 1954 Not represented
 1955 Not represented
 1956 M.M. Bryden
 1957 P. Sullican
 1958 Not represented
 1959 Not represented
 1950 Not represented
 1961 P. Anderson
 1962 I.R. Winter
 1963 I.R. Winter
 1964 R.M. Jessop
 1966 *C.J. King
 1967 A. Edwards
 1968 Not represented
 1969 A.H. Edwards
 1970 G. Hay

WEST. AUSTRALIA
 1927 *F.A. Williams
 1928 *O.F. Fry
 1929 O.F. Fry
 1930 *M. Lotz
 1931 Not represented
 1932 *J.R.S. Burnett
 1933 Not represented
 1934 C.S.C. Wickens
 1935 J. Wilkins
 1936 D. Fraser
 1937 Not represented
 1938 Not represented
 1939 B. Barratt Hill
 1946 Not represented
 1947 F. Slee
 1948 J.L. Paton
 1949 Not represented
 1950 G. Westlake
 1951 F. Slee
 1952 F. Stee
 1953 R.S. White
 1954 R.H. Kernot
 1955 Not represented
 1956 R. Thompson
 1957 A. Bird
 1958 A. Bird
 1959 H.D. Evans
 1960 A. Bird
 1961 Not represented
 1962 A. Drok
 1963 A.A. Burbridge
 1964 A.A. Burbridge
 1966 D. Gillespie
 1967 R.A. Nulsen
 1968 R. Fitzhardinge
 1969 R.M. Rowell
 1970 P.N. LeSoeuf
 1971 R.M. Rowell
 1972 C.H. Curry

UNI. OF N.S.W.
 1956
 1957 A.W. Grundy
 1958 D.B. Curchod
 1959 D.B. Curchod
 1960 W. Young
 1961 W. Hatfield
 1962 W. Young
 1963 R. Sutton
 1964 D. Marr
 1966 R. Hearn
 1967 R. Hearn
 1968 R. Hearn
 1969 J. Brennan
 1970 P. Wagner
 1971 B. Curtin
 1972 M.M. Giblin

MONASH
 1963 M.F. McKenna
 1964 W.B. Hutchins
 1966 S.R. Bennett
 1967 J. Nissen
 1968 J. Nissen
 1969 J.E. Bourke
 1970
 1971 *W.J. Baillieu
 1972 *W.J. Baillieu

NEWCASTLE
 1966 W.H. Sweetland
 1967 Not represented
 1968 Not represented
 1969 E. Lewis
 1970 Not represented
 1971 S. Silver
 1972 P. Muller

LATROBE
 1969 J. Swaney
 1970 J.A. Kettlewell
 1971 Not represented
 1972 R. Orchard

AUSTRALIAN NATIONAL UNIVERSITY
 1967 D.J.W. Troon
 1968 R.A. Chown
 1969 A. Griffiths
 1970 A. Griffiths
 1971 C.R. Lawrence
 1972 K.W. Currie

Lightweight Fours

MELBOURNE
 1963 *G.A. Park
 1964 *G.A. Park
 1966 P.H. Nicholson
 1967 *P.H. Nicholson
 1968 T.C. Johnston
 1969 *T.C. Johnston
 1970 *T.C. Johnston
 1971 *A.G. Michelmore
 1972 *G. Rees

SYDNEY
 1963 T. Nelson
 1964 R. Sillar
 1966 P. Titerton
 1967 P.A. Titerton
 1968 *A.A. Evers
 1969 A.G. Pettigrew
 1970 N.C. Croker
 1971 E.F. Carter
 1972 S. Bradbury

TASMANIA
 1963 J.D. Fricke
 1964 I.R. Winter
 1966 Not represented
 1967 Not represented
 1968 Not represented
 1969 C. Schvosbvee
 1970 K. Brown

ADELAIDE
 1963 A.B. Pannell
 1964 R.E. Bolte
 1966 *P.R. Gordon
 1967 P.R. Gordon
 1968 P.R. Gordon
 1969 H. Newland
 1970 W. Fawcett
 1971 H.S. Newland
 1972 Not represented

QUEENSLAND
 1963 W. Potter
 1964 J. Major
 1966 M. O'Shea
 1967 R. Warren
 1968 Not represented
 1969 R.W. Kaye
 1970 G.C. King
 1971 R. Warren
 1972 A. Philbrick

UNI OF N.S.W.
 1963 R. Clarke
 1964 T. Harricks
 1966 J. Kornmehl
 1967 R. Stevenson
 1968 J. Kornmehl
 1969 D. Bagnall
 1970 A. Horsley
 1971 Not represented
 1972 D.M. Townend

WEST. AUSTRALIA
 1964 D.A. Cameron
 1966 R.M. Rowell
 1967 D.A. Cannon
 1968 R.M. Rosell
 1969 M.E. Connor
 1970 M.E. Connor
 1971 Not represented
 1972 Not represented

MONASH
 1966 R.S. Searle
 1967 J.H. Donaldson
 1968 W. Henry
 1969 Not represented
 1970
 1971 W. John
 1972 C. Lowe

NEWCASTLE
 1966 W.H. Sweetland
 1967 F. Lynch
 1968 E. Lewis
 1969 Not represented
 1970 Not represented
 1971 E. Lewis
 1972 Not represented

AUSTRALIAN NATIONAL UNIVERSITY
 1966 R. Stark
 1967 Not represented
 1968 Not represented
 1969 R.W. Paltridge
 1970 A.R. Hill
 1971 M. Hassett
 1972 R.C.M. Goldsmith

Pairs

SYDNEY
 1969 L.D. Cornell
 1970 R.G. Butler
 1971 I.G. Plater
 1972 *E.F. Carter
 LATROBE
 1969 D. McIvor
 1971 R. Orchard

MELBOURNE
 1969 * W.G. Magennis
 1970 * D.J.M. Bainbridge
 1971 * D.J.M. Bainbridge
 1972 G.J. Digby
 QUEENSLAND
 1972 W. Sandford

ADELAIDE
 1970 R. Cottis
 1971 A.D. Crompton
 1972 M. Radnor
 MONASH
 1969 E.M. Thompson
 1971 J. Guest

UNI OF N.S.W.
 1971 D. Holt
 1972 B. Currie

AUSTRALIAN NATIONAL UNIVERSITY
 1971 M. B. Newsom