

Official  
Program  
and  
Souvenir

River Yarra,  
7<sup>TH</sup> May,  
1938



AUSTRALIAN  
EIGHT-OARED  
CHAMPIONSHIP

FOR THE KING'S CUP

and

AUSTRALIAN SCULLING CHAMPIONSHIP

FOR PRESIDENT'S CUP

VICTORIAN ROWING ASSOCIATION



PRICE

1/-

OFFICIAL PROGRAMME AND SOUVENIR

# Australian Eight-Oared Championship

*for*

THE KING'S CUP

*and the*

# Australian Sculling Championship

TO BE ROWED ON

**The River Yarra, Melbourne, Saturday, 7th May, 1938**

*Issued by*

THE VICTORIAN ROWING ASSOCIATION

H. E. BUTLER, Hon. Secretary.

J. P. RORKE, Hon. Treasurer.

# Victorian Rowing Association

## Season 1937-1938

### OFFICE-BEARERS

#### Patrons:

The Right Honourable SIR ISAAC ISAACS, P.C., K.C.M.G.

The Right Honourable SIR WILLIAM IRVINE, K.C.M.G.

#### President:

SIR STEPHEN MORELL

#### Vice-Presidents:

W. B. HOUSE Esq.

A. J. SHEPHERD, Esq.

J. M. MACFARLANE, Esq.

A. M. TREACY, Esq.

Sir GEORGE FAIRBAIRN

H. J. GREEN, Esq.

A. L. DOBBIE, Esq.

H. T. JAMES, Esq.

#### Honorary Treasurer:

J. P. RORKE

#### Honorary Secretary:

H. E. BUTLER

#### Assistant Honorary Secretary:

C. F. RAVEN

#### Honorary Auditors:

R. L. THWAITES, A.C.A. (Aust.)

A. R. DUNCAN, B. Comm

Despatch Steward: H. T. JAMES

Starter: H. L. La ROCHE

JUDGE: T. W. JENKIN

Clerk of Scales: J. P. RORKE

Umpire: T. L. MANNIX

Asst. Judge: R. L. THWAITES

Timekeepers: Messrs. E. T. BRADSHAW, E. KENNY and T. L. MANNIX.

#### Executive Committee:

E. KENNY, H. T. JAMES, A. L. DOBBIE, G. M. HUTTON, N. S. MUIR, M. BURKE,  
A. M. DOWNING.



L. A. PURVES (Victorian Sculler)

# Interstate Sculling Race

*For the President's Cup and the Championship of Australia*

To start at 3 p.m.

COURSE:—From 2-mile 50-chain mark, Coode Canal, to 10-chain mark, Lower Yarra.

Distance—2½ Miles.

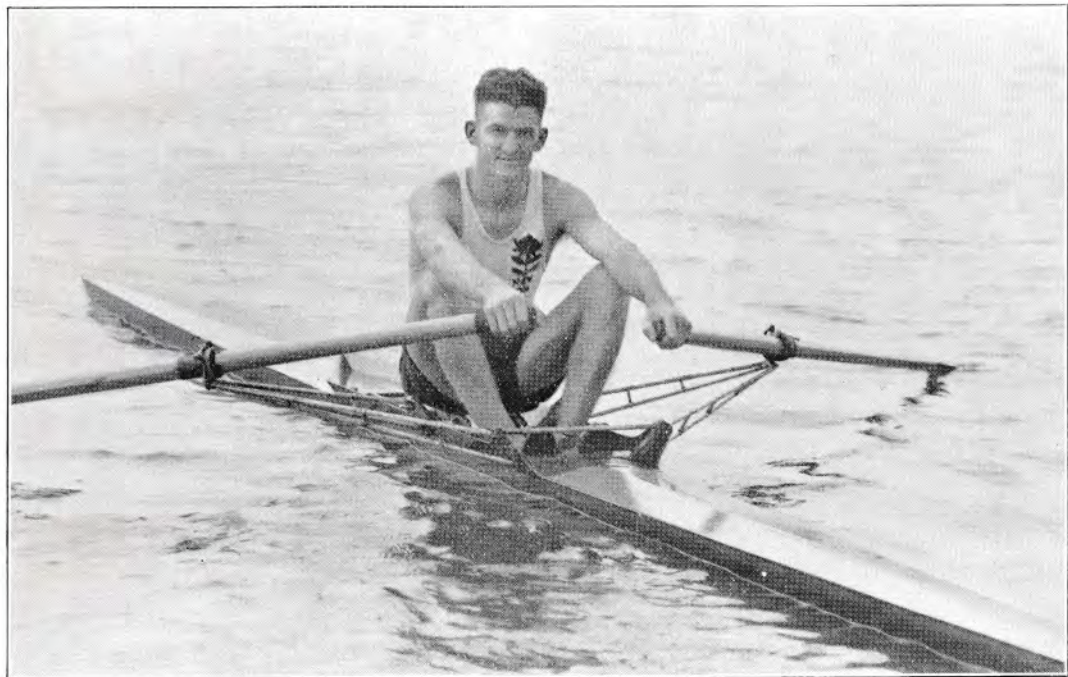
*Stations numbered from the South (Port Melbourne) Side of the Coode Canal.*

<i>State.</i>	<i>Colors.</i>	<i>Weight.</i> <i>st. lb.</i>
Station No. 1—VICTORIA . . . . . (L. A. PURVES)	Navy Blue Singlet, White V on Left Breast . .	13 7
Station No. 2—NEW SOUTH WALES . . . . . (C. A. PEARCE)	Light Blue Jersey, Waratah on Left Breast . .	12 10
Station No. 3—SOUTH AUSTRALIA . . . . . (R. M. L. NINHAM)	White, Blue and Brown Facings . . . . .	11 12

1..... 2..... 3.....

Time: ..... min. .... secs.





C. A. PEARCE (New South Wales Sculler)

# Interstate Eight-Oared Race

*For the King's Cup and the Championship of Australia*

To start at 3.45 p.m.

COURSE:—From 2-mile 50-chain mark, Coode Canal, to 10-chain mark, Lower Yarra.

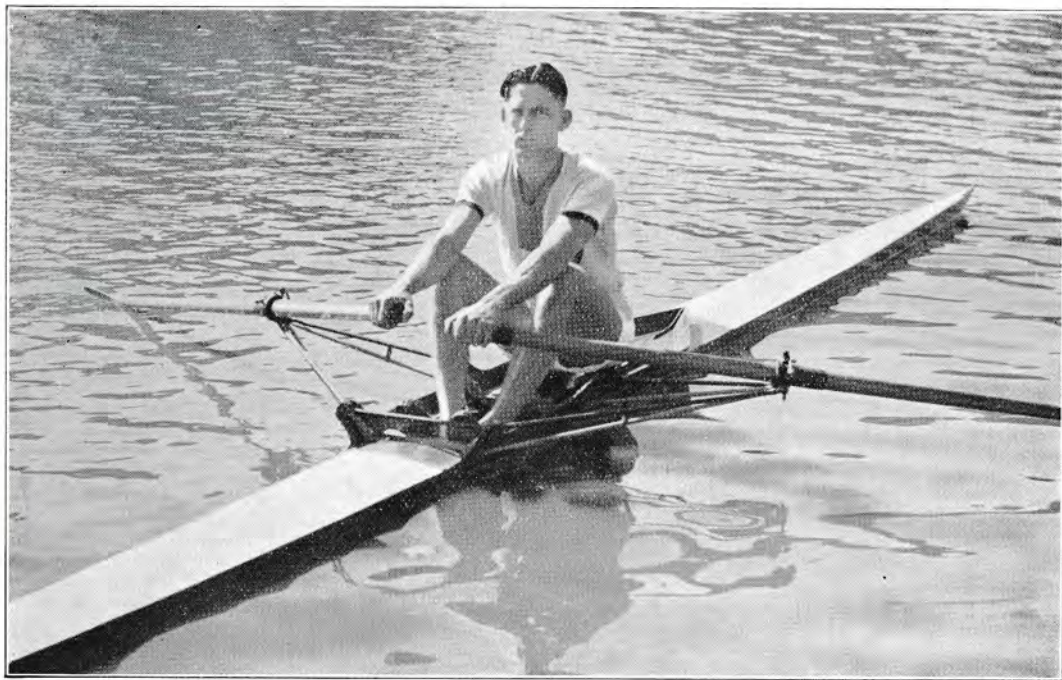
Distance—2½ Miles.

*Stations numbered from the South (Port Melbourne) Side of Coode Canal.*

<i>State.</i>	<i>Colors.</i>
Station No. 1—TASMANIA .. .. .	Myrtle Green Singlet, Map of Tasmania in Primrose, and Crossed Oars in Red.
Station No. 2—NEW SOUTH WALES .. ..	Light Blue Jersey, Waratah on Left Breast.
Station No. 3—WEST AUSTRALIA .. .. .	Gold Singlet with Black Swan on Chest.
Station No. 4—VICTORIA .. .. .	Navy Blue Jersey, White V on Left Breast.
Station No. 5—SOUTH AUSTRALIA .. .. .	White, Blue and Brown Facings.
Station No. 6—QUEENSLAND .. .. .	Maroon and White.

1 ..... 2 ..... 3 .....  
4 ..... 5 ..... 6 .....

Time: ..... min. .... secs.



R. NINHAM (South Australian Sculler)

(By courtesy  
H. Krischock, Adelaide.)



## NOTICE TO COMPETITORS

---

To ensure punctual starting, competitors must be IN THEIR BOATS at the starting line 15 minutes before the time fixed for starting.

Delay in starting will mean that the race is liable to be interfered with by shipping.

Signal to start and finish will be by pistol fire.

In the event of any breakage of an oar or boat fittings during the first half minute's rowing, the race shall be stopped and restarted from the original starting point.

Two shots from the Umpire's pistol shall be the signal to stop rowing should the Umpire wish to stop the race.

Any crew or sculler leaving its or his true course during the race, and thereby impeding by its or his wash or otherwise any other competing crew or sculler, shall be liable to disqualification. A boat's true course is the shortest way to the winning post, leaving room for all opposing boats to come up level in the position in which they started.

Cups will be presented at the Melbourne Rowing Club at 5 p.m. on the 7th May, 1938.

If the starter considers the start unsatisfactory, he may, within 10 seconds thereafter, recall the competitors to their stations, and any competitor refusing to start again shall be disqualified. The signal recalling competitors in the first 10 seconds shall be one shot from the starter's pistol.



TASMANIAN KING'S CUP EIGHT

---

---

STATION No. 1

## Tasmania

COLORS:—*Myrtle Green Singlet,  
Map of Tasmania in Primrose  
and Crossed Oars in Red.*



		<i>st. lb.</i>
Bow	K. J. TILLACK ... ..	10 10
2	R. G. RICHARDSON ... ..	12 5
3	F. E. ADLARD ... ..	13 0
4	A. J. SMITH ... ..	13 10
5	A. B. DOUGLAS ... ..	12 13
6	B. R. GIBSON ... ..	12 7
7	A. C. CRESSWELL ... ..	11 0
Str.	H. S. H. PORTE ... ..	11 0

(Average weight, 12 st. 2½ lbs.)

Coxswain ... .. J. W. SMITH (8 st. 1 lb.)

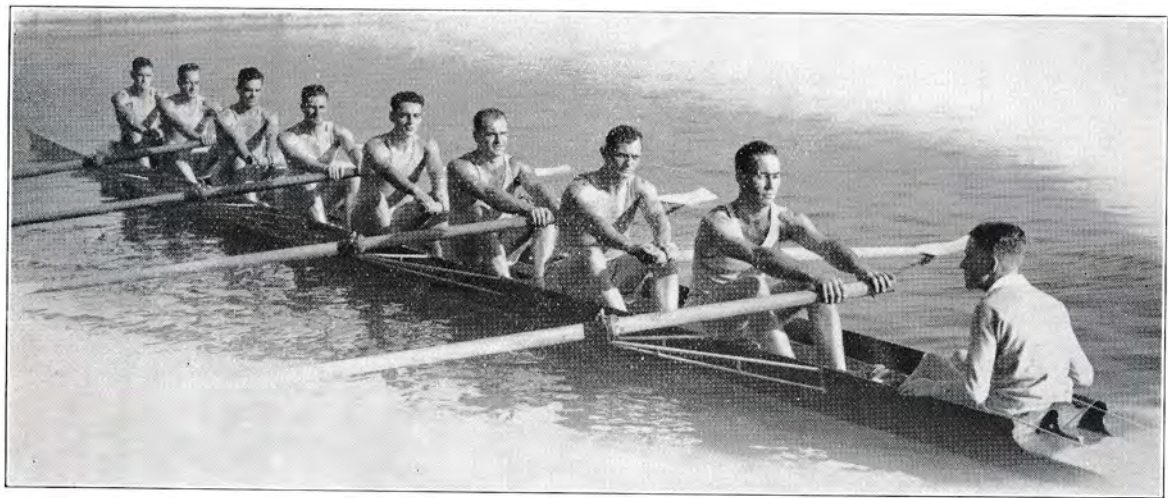
Coach ... .. E. L. GIBSON

Emergency J. A. STEPHENSON (12 st. 13 lbs.)

Manager ... .. E. T. BESSELL

---

---



NEW SOUTH WALES KING'S CUP EIGHT

---

---

STATION No. 2

New South Wales

COLORS:—*Light Blue, Red*  
*Waratah on Left Breast.*



		<i>st. lb.</i>
Bow	B. A. WILLIS ... ..	12 4
2	W. F. BRADLEY ... ..	12 5
3	D. E. W. BAIN ... ..	12 6
4	J. F. MYERS ... ..	12 4
5	M. T. WOOD ... ..	13 6
6	W. J. DIXON ... ..	12 12
7	A. B. GOULD ... ..	12 12
Str.	F. S. GRACE ... ..	12 6

(Average weight, 12 st. 9½ lbs.)

Coxswain ... .. H. F. KERR (8 st.)

Coach ... .. D. W. BOWDEN

Emergency ... .. D. A. ELIAS (11 st.)

Manager ... .. J. ROOK

---

---





WESTERN AUSTRALIAN KING'S CUP EIGHT

---

---

STATION No. 3

## Western Australia

COLORS:—*Gold Singlet with  
Black Swan on Chest.*



		<i>st. lb.</i>
Bow	W. H. TEEDE ... ..	10 12
2	J. E. JEFFREYS ... ..	11 10
3	L. MONCRIEFF ... ..	12 1
4	E. C. BISHOP ... ..	12 8
5	G. E. YEWERS ... ..	12 5
6	R. PARAMOR ... ..	12 9
7	V. SHAKESPEARE ... ..	12 4
Str.	D. FRASER ... ..	11 12

(Average weight, 12 st. 0½ lbs.)

Coxswain ... .. K. CARRICK (8st.)

Coach ... .. G. ORGILL

Emergency ... A. MARSHALL (10 st. 12 lbs.)

Manager ... .. H. L. BUTTON

---

---



VICTORIAN KING'S CUP EIGHT

(By courtesy  
"The Herald")

---

---

STATION No. 4

Victoria

COLORS:—*Navy Blue, White V.*



		<i>st. lb.</i>
Bow	M. W. HUTTON ... ..	11 1
2	M. GASKIN ... ..	12 6
3	S. J. PITCHER ... ..	11 11
4	A. JAMES ... ..	12 7
5	G. I. ANDERSON ... ..	13 5
6	R. MILLS ... ..	12 11
7	S. J. ELDER ... ..	12 9
Str.	A. JACOBSEN ... ..	13 0

(Average weight, 12 st. 6½ lbs.)

Coxswain ... .. D. CALNIN (8 st. 3 lbs.)

Coach ... .. B. S. THOMPSON

Emergencies—

G. HUTCHINS (12 st. 6 lbs.)

W. G. ROSS (12 st. 6 lbs.)

K. ANDERSON (11 st. 2 lbs.)

L. R. JELBART (13 st.)

Manager ... .. H. E. BUTLER

---

---





SOUTH AUSTRALIAN KING'S CUP EIGHT

(By courtesy  
H. Krischock, Adelaide.)



---

---

STATION No. 5

South Australia

COLORS:—*White, Blue and Brown*  
*Facings.*



		<i>st.</i>	<i>lb.</i>
Bow	J. R. GOODE . . . . .	10	12
2	J. H. BOLLEN . . . . .	12	0
3	G. M. SHEPPARD . . . . .	11	7
4	G. T. BURGESS . . . . .	13	0
5	K. B. ROENNFELDT . . . . .	13	2
6	E. F. YATES . . . . .	12	2
7	R. K. DUNN . . . . .	12	0
Str.	M. J. RICHARDSON . . . . .	11	0

(Average weight, 11 st. 13 $\frac{3}{8}$  lbs.)

Coxswain . . . . . D. W. EARL (8 st. 7 lbs.)

Coach . . . . . T. K. QURBAN

Emergencies—

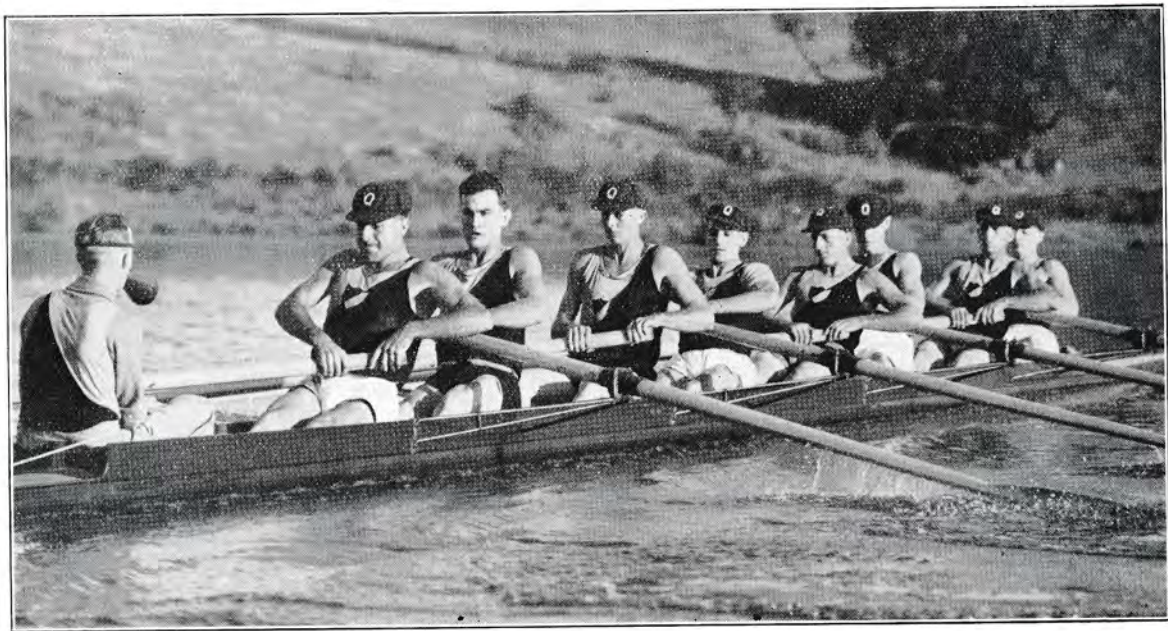
A. J. GREGORY (12 st. 5 lbs.)

F. M. BESLEY (11 st. 4 lbs.)

Manager . . . . . C. BAUMANN

---

---



QUEENSLAND KING'S CUP EIGHT

---

---

STATION No. 6

## Queensland

COLORS:—*Maroon and White.*



		<i>st. lb.</i>
Bow	N. H. POWELL ... ..	10 6
2	P. H. F. GREGORY ... ..	11 1
3	D. C. O'BEIRNE ... ..	10 7
4	G. H. WALTON ... ..	12 12
5	F. J. MORGAN ... ..	13 1
6	G. PERKINS ... ..	10 10
7	D. D. GLASGOW ... ..	11 2
Str.	W. B. MOLE ... ..	10 10

(Average weight, 11 st. 4 $\frac{3}{8}$  lbs.)

Coxswain ... .. R. MARKS (8 st.)

Coach ... .. E. P. EVERS

Emergency ... .. T. COOK (12 st. 3 lbs.)

Manager ... .. F. L. POULGRAIN

---

---

# Record of Australian Championship Sculls

Year	Rowed at	Won by	Other Competitors	Time M. S.
1892	Brisbane	M. J. Slack (Q.)	W. Lambert (N.S.W.)	19 36
1895	Brisbane	E. Powell (V.)	W. Lambert (N.S.W.), M. J. Slack (Q.)	20 22
1896	Sydney	M. J. Slack (Q.)	J. L. Bannister (N.S.W.), W. McCormack (N.Z.), E. Powell (V.), A. Dennis (Q.), H. Lindgren V., M. J. Slack (Q.)	23 44 22 2 18 41 1/2
1897	Melbourne	E. Powell (W.A.)	C. Donald (V.)	23 33
1898	Brisbane	A. Dennis (Q.)	M. J. Slack (Q.), J. Lumsden (Q.)	19 22
1899	Melbourne	J. J. Daley (N.S.W.)	P. C. Ivens (V.), J. J. Daley (N.S.W.), H. Brasch (V.)	21 12
1900	Brisbane	M. J. Slack (Q.)	M. J. Slack (Q.), P. C. Ivens (V.), R. Evans (Tas.), P. C. Ivens (V.), H. J. G. Edwards (W.A.)	18 40 3/5 20 33 3/4
1901	Sydney	J. J. Daley (N.S.W.)	W. Robinson (Tas.), P. J. Walsh (W.A.), H. J. Stephenson (W.), R. Green (N.S.W.), E. Jack (Tas.), J. Hill (W.A.)	21 35
1902	Adelaide	T. H. Bourke (Tas.)	J. R. Towns (N.S.W.), W. M. Callaghan (Q.), E. Jack (Tas.)	20 54 2/5
1903	Melbourne	T. H. Bourke (Tas.)	F. Coverdale (Tas.), A. Dennis (Q.), A. Richards (V.)	17 50 1/5
1904	Brisbane	T. H. Bourke (Tas.)	P. C. Ivens (V.), A. Priddle (N.S.W.), J. R. Towns (N.S.W.), H. E. Stevens (V.)	16 5 16 19
1905	Sydney	P. C. Ivens (V.)	G. E. Rogers (W.A.), F. Coverdale (Tas.)	18 50
1906	Perth	P. C. Ivens (V.)	J. Fyfe Marr (Q.), E. Thomas (S.A.), L. Davis (V.), E. Thomas (S.A.)	16 45 24 35 4/5 17 11
1907	Adelaide	H. Brasch (V.)*	G. A. Westbrook (Tas.), J. Barton (V.), M. Goodsell (N.S.W.)	16 56
1908	Melbourne	H. Brasch (V.)	J. Barton (V.), R. Neilson (N.S.W.), A. Pitt (T.), J. Barton (V.), M. Bradley (T.), S. McGorm (V.), A. L. Sadder (W.A.), G. Rogers (W.A.), W. C. Lorimer (N.S.W.), R. L. Naylor (S.A.), L. C. Nimmo (Tas.)	17 27 1/4 16 55
1909	Brisbane	J. R. Towns (N.S.W.)	A. W. Cuthbertson (T.), H. E. Ricketts (S.A.), C. Lorimer (N.S.W.), A. A. Baynes (Q.)	18 19 1/2
1910	Hobart	C. McVilly (Tas.)	J. A. Goulding (N.S.W.), A. Cambridge (V.), L. C. Nimmo (T.)	17 13 1/5
1911	Sydney	C. McVilly (Tas.)	J. A. Goulding (N.S.W.), A. Cambridge (V.), L. C. Nimmo (T.)	15 35
1912	Perth	H. Green (N.S.W.)	A. H. Cambridge (V.), L. Marsh (T.), W. Pfeifer (S.A.)	18 10
1913	Adelaide	F. Coverdale (Tas.)	L. Marsh (T.), A. H. Cambridge (V.), Buckley (Q.)	15 30 2/5 15 47
1914	Melbourne	C. McVilly (Tas.)	K. Langley (W.A.)	15 14
1920	Brisbane	A. A. Baynes (Q.)	A. Buckley (Q.), R. Beauchamp (T.), R. Jelbart (V.)	19 5 1/5 14 32
1921	Launceston	G. A. Westbrook (T.)	R. Beauchamp (T.), C. F. W. Pepler (V.), J. Richardson (O.)	17 46
1922	Sydney	A. G. Bull (N.S.W.)	R. Beauchamp (T.), C. F. W. Pepler (V.), C. E. Slaughter (Q.)	17 46
1923	Perth	A. G. Bull (N.S.W.)	C. F. W. Pepler (V.), C. E. Slaughter (Q.), H. A. Wilkinson (T.)	16 36 3/5 16 15
1924	Adelaide	J. Barton (V.)	K. Langley (W.A.)	15 10
1925	Melbourne	A. Cambridge (V.)	L. A. Purves (V.), A. V. Kunoth (S.A.)	15 10
1926	Brisbane	A. A. Baynes (Q.)		
1927	Hobart	R. Pearce (N.S.W.)		
1928	Sydney	R. Pearce (N.S.W.)		
1929	Perth	R. Pearce (N.S.W.)		
1930	Mannum (S.A.)	J. R. Scott (N.S.W.)		
1931	No race held			
1932	Melbourne	H. Turner (N.S.W.)		
1933	Brisbane	H. Turner (N.S.W.)		
1934	Hobart	H. Turner (N.S.W.)		
1935	Penrith (N.S.W.)	H. Turner (N.S.W.)		
1936	Perth	C. W. Pearce (N.S.W.)		
1937	Murray Br. (S.A.)	C. W. Pearce (N.S.W.)		

\*E. Jack passed the winning post first, but was disqualified as he failed to comply with the amateur definition.

†No time taken—collision during race.



# Record of Eight-Oared Championship of Australia

Year	Won by	Other Competitors	Rowed at	Time M. S.
1878	Victoria	N.S.W.	Melbourne	—
1879	N.S.W.	Victoria	Sydney	20 6
1880	Victoria	N.S.W.	Melbourne	26 45
1881	Victoria	N.S.W.	Sydney	18 12
1882	N.S.W.	Victoria	Melbourne	20 47
1883	Victoria	N.S.W.	Sydney	18 10
1884	Victoria	N.S.W.	Melbourne	24 5
1885	N.S.W.	Victoria, Tasmania, and Queensland	Sydney	19 28
1886	Victoria	N.S.W.	Melbourne	18 42 1/3
†1888	Victoria	N.S.W.	Sydney	17 12 3/4
1888	Victoria	N.S.W.	Melbourne	17 46
1889	Victoria	N.S.W.	Sydney	16 57
1890	Victoria	Queensland and N.S.W.	Melbourne	17 30
1891	Victoria	N.S.W. and Victoria	Sydney	18 45 1/2
1892	Victoria	N.S.W. and Queensland	Melbourne	18 45
1893	N.S.W.	Victoria and Queensland	Brisbane	15 5
1894	Victoria	N.S.W. and Queensland	Sydney	19 23
1895	Victoria	N.S.W. and Queensland	Melbourne	16 24
1896	Victoria	N.S.W. and Queensland	Brisbane	16 16 1/3
1897	Victoria	N.S.W. and Queensland	Sydney	17 17
1898	Victoria	W.A. and Queensland	Melbourne	17 10
1899	Victoria	Queensland	Brisbane	16 1
1900	Victoria	N.S.W., S.A., Queensland	Melbourne	15 50
1901	Victoria	N.S.W., Queensland, S.A.	Brisbane	17 14
1902	Victoria	S.A., Queensland, W.A., N.S.W.	Sydney	17 7
1903	Victoria	Queensland, S.A., N.S.W., W.A.	Adelaide	*14 27 4/5
1904	Victoria	S.A., N.S.W., W.A., S.A., Queensland	Brisbane	17 17 2/5
1905	Tasmania	Tas., N.S.W., W.A., S.A., Queensland	Sydney	16 25
1906	Tasmania	Queensland, N.S.W., W.A., S.A.	Perth	15 57
1907	Victoria	Tas., S.A., W.A., Queensland	Adelaide	17 4
1908	N.S.W.	Queensland, S.A.	Melbourne	*14 24 1/5
1909	Tasmania	Queensland, S.A.	Brisbane	16 2
1910	N.S.W.	Queensland, S.A.	Hobart	15 27
1911	N.S.W.	Queensland, S.A.	Sydney	17 24
1912	Victoria	Tas., S.A., W.A., Queensland	Sydney	15 33
*1913	S. Australia	Tasmania, W.A.	Perth	17 1
1914	Tasmania	S.A., W.A., Vic., N.S.W., Queensland	Adelaide	*13 33
1920	S. Australia	W.A., Tas., N.S.W., Vic., Queensland	Mebourne	15 5
1921	W. Australia	Tasmania, Vic., S.A., Q., N.S.W.	Brisbane	14 37
1922	S. Australia	Victoria, W.A., Tasmania, N.S.W., Q.	Lancaster	16 19
1923	S. Australia	W.A., Victoria, N.S.W., Tasmania, Vic.	Sydney	16 19
1924	Queensland	N.S.W., S.A., W.A., Tasmania, Vic.	Sydney	17 31
1925	W. Australia	Tasmania, N.S.W., S.A., Vic., O'land	Adelaide	18 11 3/5
1926	Tasmania	S.A., Victoria, Queensland, N.S.W.	Melbourne	17 0 1/5
§1927	W. Australia	N.S.W., Victoria, S.A.	Brisbane	15 43
1928	N.S.W.	Queensland, Tas., Vic.	Hobart	16 6
1929	W. Australia	W.A., Victoria, South Australia	Sydney	16 50 2/5
1930	Victoria	N.S.W., Queensland, Tas., S.A., W.A.	Perth	16 43
1931	Race not held		Mannum (S.A.)	16 47
†1932	Victoria	N.S.W., W.A., S.A., Q., Tasmania	Melbourne	15 9 1/5
1933	N.S.W.	Queensland, Victoria, Tas., S.A.	Brisbane	14 30
¶1934	N.S.W.	W.A., Queensland, Tas., Vic., S.A.	Hobart	19 38 1/2
1935	N.S.W.	W.A., S.A., Victoria, Q., Tasmania	Perth (N.S.W.)	16 20 1/5
1936	N.S.W.	South Australia, W.A., Victoria	Perth	16 22
1937	S. Aust.	N.S.W., W.A., Tasmania, Vic., Q.	Murray Bridge (S.A.)	15 22

## FOURS

Year	Rowed at	Won by	Other Competitors
1888	Sydney	Victoria	New Zealand, Tasmania, New South Wales
1896	Sydney	Victoria	New Zealand, New South Wales
			New Zealand, in April and November.
†Two races were rowed in 1888—in April and November.			
*Victoria, N.S.W. and Queensland did not finish owing to accidents.			
§Tas. and Qld. swamped. †Distance, 2½ miles. ¶S.A. and Vic. swamped.			



---

C. G. MEEHAN & CO. PTY. LTD.  
PRINTERS AND PUBLISHERS  
WYNYARD STREET, SOUTH MELBOURNE

---

