

Souvenir

Programme

INTER-STATE  
EIGHT-OAR ROWING  
& SCULLING  
CHAMPIONSHIPS  
OF  
AUSTRALIA



Hamilton Reach  
Brisbane River

8<sup>TH</sup> May 1926

J WHEILDON  
BRISBANE 4 JAN 83

AUSTRALIAN EIGHT OAR & SCULLING CHAMPIONSHIPS, 1926

# Official Programme and Souvenir



AUSTRALIAN EIGHT OAR  
ROWING AND SCULLING

# Amateur Championships

Hamilton Reach, Brisbane River  
Saturday, May 8th, 1926



Issued by  
QUEENSLAND ROWING ASSOCIATION

GEORGE N. SMOOTHEY  
*Hon. Secretary*

BRISBANE, QUEENSLAND - 8th MAY, 1926

## DELEGATES TO COMMITTEE

Brisbane Rowing Club . . .	Messrs. D. ROCHE, J. BRENNAN, A CLARK
Brisbane Grammar School . . .	
Brisbane Boys' College . . .	
Bundaberg Rowing Club . . .	Messrs. C. A. GRIMLEY, E. THURLOW
Commercial Rowing Club . . .	Messrs. L. EASTMAN, N. GRIMES
Leichhardt Rowing Club . . .	Mr. H. KYLE
Maryborough Rowing Club . . .	Mr. R. HUNTER
Rockhampton Rowing Club . . .	Messrs. F. W. De LITTLE, H. WELER
Southport High School Rowing Club . . .	
University Boat Club . . .	
Wide Bay Rowing Club . . .	Mr. G. N. SMOOTHY
Toowong Rowing Club . . .	Mr. J. ALLISON
Great Public Schools Rowing Club . . .	Mr. G. S. WARNER
Metropolitan District Rowing Association . . .	Mr. F. R. CONN
Maryborough District Rowing Association . . .	Mr. G. N. SMOOTHY
Subscribers' Delegates . . .	Messrs. R. G. H. GILL, C. RUDD, A. REID, N. BLAKELEY

# QUEENSLAND ROWING ASSOCIATION

## *Office Bearers:*

SEASON 1925-26

### *Patron :*

HIS EXCELLENCY THE LIEUTENANT GOVERNOR, Hon. W. LENNON

### *President :*

D. O'CONNOR, Esq.

### *Vice-Presidents :*

A. BAYNES, Esq.	J. N. DEVOY, Esq.	Lt.-Col. F. A. HUGHES
F. E. BAYNES, Esq.	F. W. De LITTLE, Esq.	J. CLARK, Esq.
F. S. N. BOUSFIELD, M.A.	A. BURTON, Esq.	J. F. DONOVAN, Esq.
Lt.-Col. CAMERON, M.P.	J. McLEER, Esq.	F. BAKER, Esq.

### *Chairman :*

R. G. H. GILL, Esq.

### *Life Members :*

J. CLARK, Esq.	D. O'CONNOR, Esq.	R. G. H. GILL, Esq.
----------------	-------------------	---------------------

# QUEENSLAND ROWING ASSOCIATION

## *Regatta Officials:*

**Umpire :**

F. W. De LITTLE, Esq.

**Starter :**

C. RUDD, Esq.

**Judge :**

Hon. J. F. DONOVAN

**Timekeepers :**

R. WILSON, Esq.; E. E. McCASKIE, Esq.

**Weight Steward :**

H. KYLE, Esq.

**Chairman :**

R. G. H. GILL, Esq.

**Treasurer :**

P. C. HOOPER

**Hon. Secretary :**

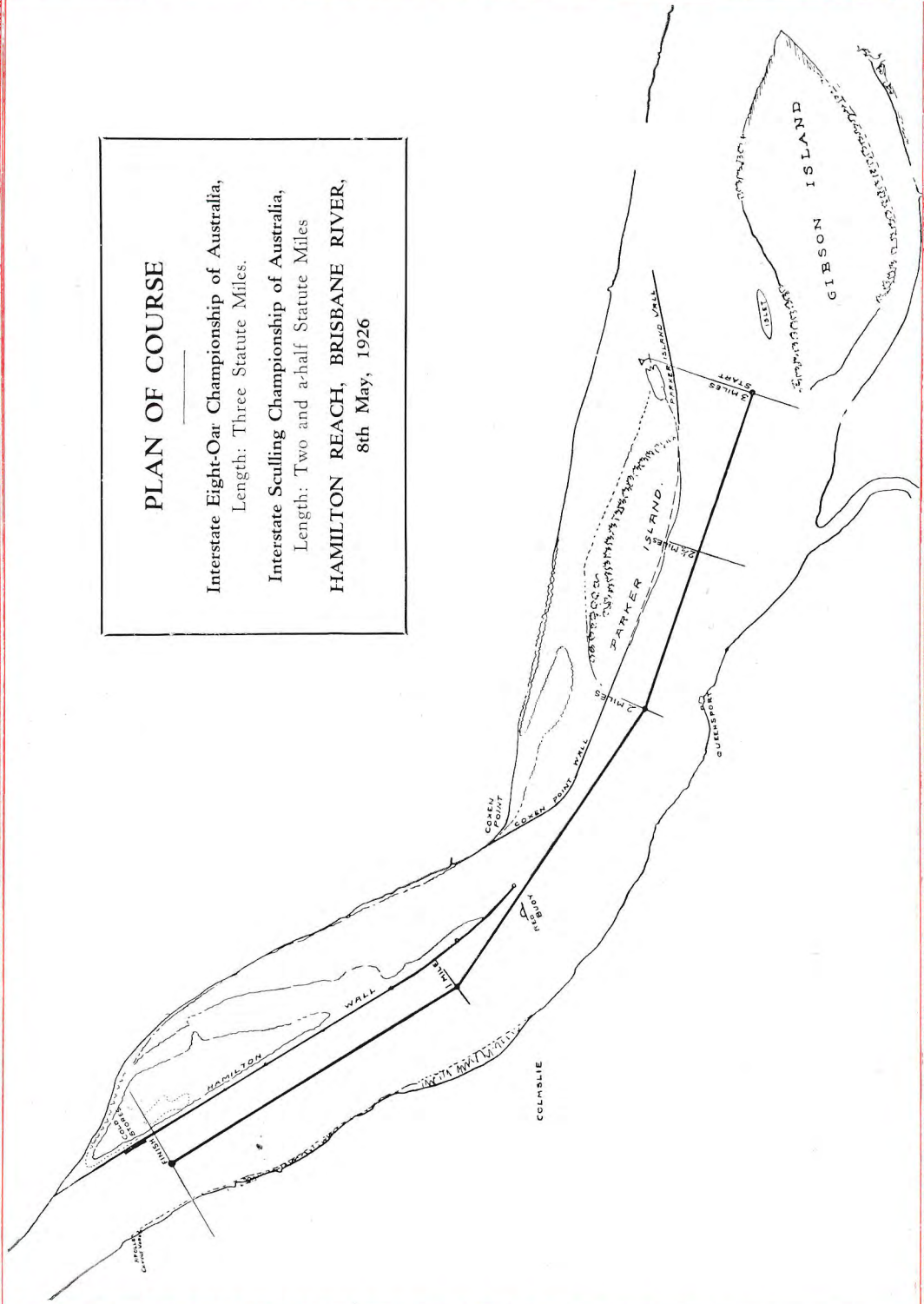
G. N. SMOOTHY

### PLAN OF COURSE

Interstate Eight-Oar Championship of Australia,  
Length: Three Statute Miles.

Interstate Sculling Championship of Australia,  
Length: Two and a-half Statute Miles

HAMILTON REACH, BRISBANE RIVER,  
8th May, 1926



# A Message—

*To Our Fellow Rowing Friends from the various  
States of the Commonwealth*

**Y**OU are heartily welcome to this glorious and sunny State of Queensland; and we are, after a period of six years, delighted to have you again with us.

It is our sincere wish that your short stay will be thoroughly enjoyable to you. We sincerely regret that our friends from the far-away Western State are not competing in this year's great historical struggle, and we send them our heartiest good wishes. May you still prosper and reap the highest reward for your love and hard work in the sport of Amateur Rowing is the sincere wish of the officers and members of the Queensland Rowing Association.

For the Queensland Rowing Association,

GEORGE N. SMOOTHY,  
Hon. Secretary.

# Interstate Sculling Race

FOR THE

## Amateur Championship of Australia

To start at 3 p.m.

**Course:** Starting on a line from post on Doughboy Wall, just below Borthwick's Wharf, and finishing 50 yards below Hamilton Cold Stores.

**Distance:** Two and a-half Statute Miles.

**Stations:** At the start No. 1 Station is nearest to the North Bank.

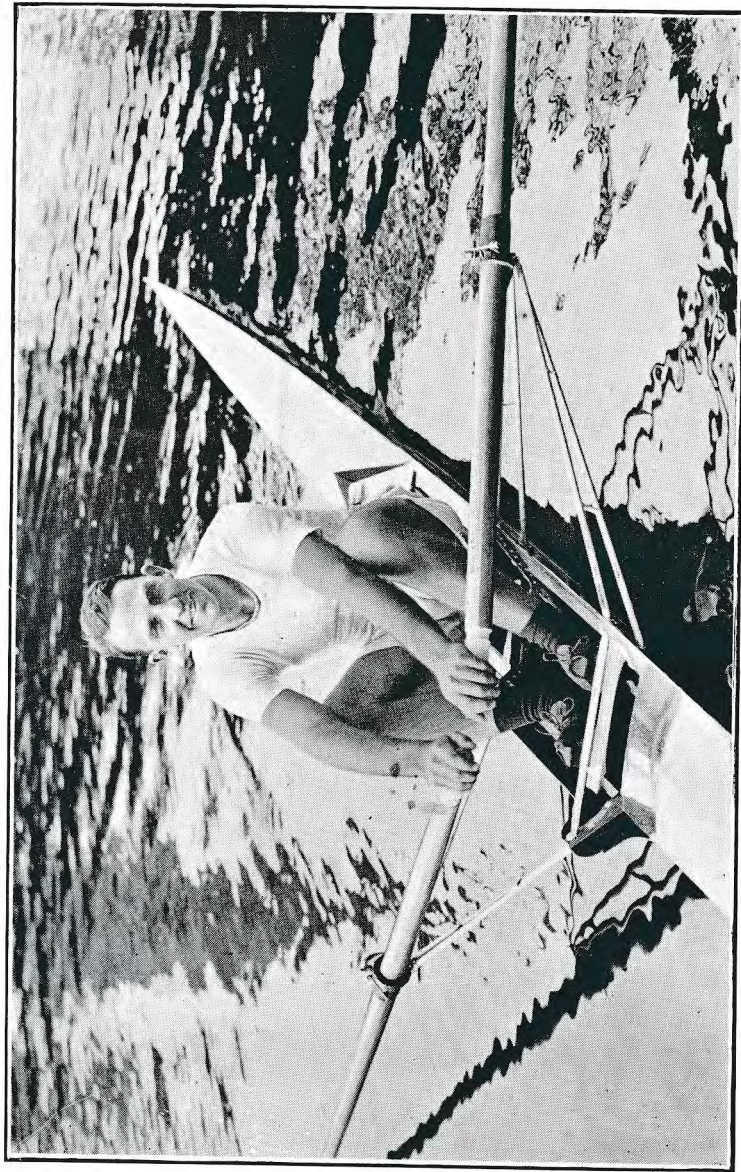
- Station No. 1—QUEENSLAND
- Station No. 2—NEW SOUTH WALES
- Station No. 3—VICTORIA
- Station No. 4—TASMANIA

First..... Second..... Third.....

Time.....



## QUEENSLAND



Weight, 11 st. 8 lb.

A. A. BAYNES, Amateur Champion Sculler of Queensland.

Colours: Maroon singlet, White Q on back.

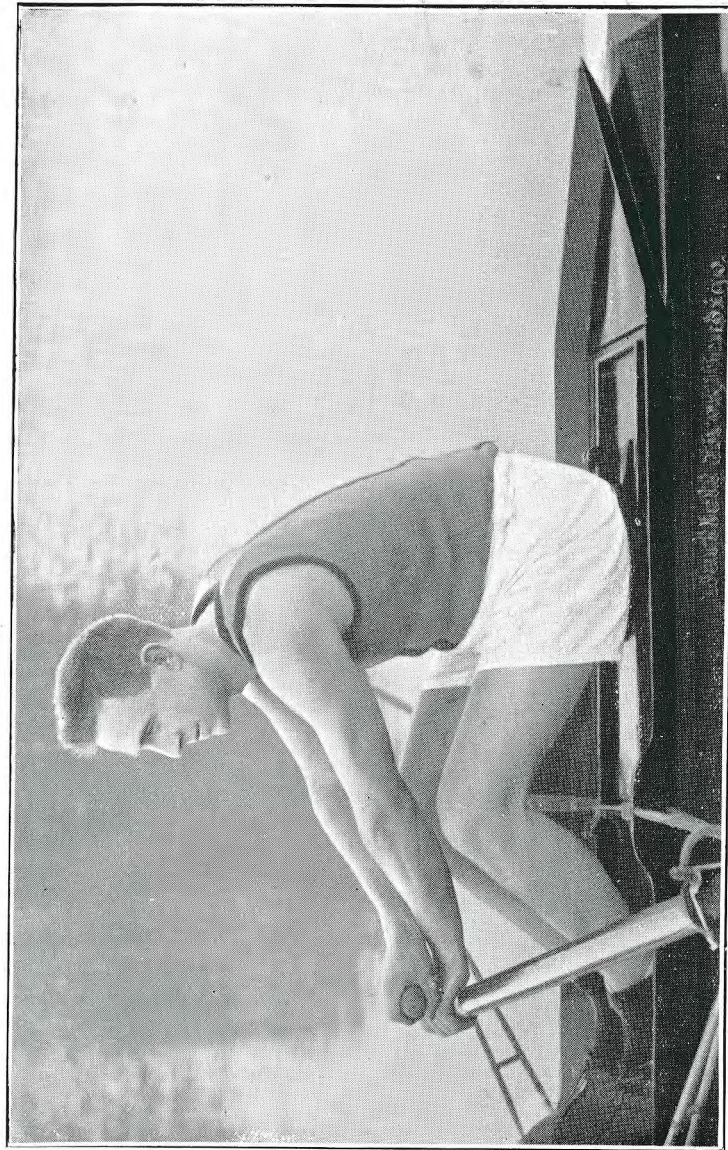
## NEW SOUTH WALES



Weight, 10 st. 6 lb.

J. A. GOULDING, Amateur Champion Sculler of New South Wales.  
Colours: Light Blue, Waratah on left breast.

# VICTORIA



A. H. CAMBRIDGE, Amateur Sculling Champion of Victoria.

Weight, 11 st. 8 lb.

Colours: Dark Blue, White V on cap.

# TASMANIA



L. C. NIMMO, Amateur Sculling Champion of Tasmania.  
Weight, 12 st.      Colours: Myrtle Green Jersey, Badge of Tasmania in Primrose, with Cross Oars in Rose.

AUSTRALIAN EIGHT OAR & SCULLING CHAMPIONSHIPS, 1926

Record of  
Australian Championship Sculls

Year.	Rowed at	Won by	Other Competitors.	Time. m. s.
1892	Brisbane	M. J. Slack (Q.)	W. Lambert (N.S.W.), M. J. Slack (Q.)	19 36
1895	Brisbane	E. Powell (V.)	J. L. Bannister (N.S.W.), W. McCormack (N.Z.), E. Powell (V.)	20 22
1896	Sydney	M. J. Slack (Q.)	A. Dennis (Q.), H. Lindgren (V.)	22 2
1897	Melbourne	E. Powell (W.A.)	M. J. Slack (Q.)	22 44
1898	Brisbane	A. Dennis (Q.)	M. J. Slack (Q.)	18 41½
1899	Melbourne	J. J. Daley (N.S.W.)	M. J. Slack (Q.)	23 23
1901	Sydney	J. J. Daley (N.S.W.)	M. J. Slack (Q.), J. Lumsden (Q.)	19 22
1902	Adelaide	J. J. Daley (N.S.W.)	F. J. Fahy (S.A.)	21 12
1903	Melbourne	T. H. Bourke (Tas.)	P. C. Ivens (V.), J. J. Daley (N.S.W.), H. Brasch (V.)	18 40½
1904	Brisbane	T. H. Bourke (Tas.)	M. J. Slack (Q.), P. C. Ivens (V.)	20 33½
1905	Sydney	T. H. Bourke (Tas.)	R. Evans (Tas.), P. C. Ivens (V.), H. J. G. Edwards (W.A.)	20 33½
1906	Perth	P. C. Ivens (V.)	W. Robinson (Tas.), P. J. Walsh (W.A.), H. J. Stephenson (W.A.)	21 35
1907	Adelaide	P. C. Ivens (V.)	R. Green (N.S.W.), E. Jack (Tas.), J. Hill (W.A.)	20 54½
1908	Melbourne	H. Brasch (V.)*	J. R. Towns (N.S.W.), W. M. Callaghan (Q.), E. Jack (Tas.)	17 50½
1909	Brisbane	J. R. Towns (N.S.W.)	F. Coverdale (Tas.), A. Dennis (Q.), A. Richards (V.)	16 5
1910	Hobart	C. McVilly (Tas.)	P. C. Ivens (V.), A. Priddle (N.S.W.)	16 19
1911	Sydney	C. McVilly (Tas.)	J. R. Towns (N.S.W.), H. E. Stevens (Vic.)	18 50
1912	Perth	H. Green (N.S.W.)	G. E. Rogers (W.A.), F. Coverdale (Tas.)	16 45
1913	Adelaide	F. Coverdale (Tas.)	J. Fyfe Marr (Q.)	24 35½
1914	Melbourne	C. McVilly (Tas.)	L. Davis (V.), E. Thomas (S.A.)	17 11
1920	Brisbane	A. A. Baynes (Q.)	G. A. Westbrooke (Tas.), J. Barton (V.), M. Goodsell (N.S.W.)	16 56
1921	Launceston	G. A. Westbrooke (Tas.)	J. Barton (V.), R. Neilson (N.S.W.)	17 27½
1922	Sydney	A. G. Bull (N.S.W.)	A. Pitt (T.), J. Barton (V.)	16 55
1923	Perth	A. G. Bull (N.S.W.)	M. Bridley (T.), S. McGorm (V.), A. L. Saddler (W.A.)	18 19½
1924	Adelaide	J. Barton (V.)	G. Rogers (W.A.), W. C. Lormier (N.S.W.), R. L. Naylor (S.A.), L. C. Nimmo (Tas.)	17 13½
1925	Melbourne	A. Cambridge	A. Baynes (Q.), H. E. Rickerts (S.A.), A. W. Cuthbertson (Tas.), C. Lormier (N.S.W.)	

\*E. Jack passed the winning post first, but was disqualified, as he failed to comply with the amateur definition.

# Interstate Eight-Oar Race

FOR THE

## Championship of Australia

To start at 4 p.m.

**Course:** Starting on a line from post on Doughboy Wall, opposite beacon on Parker Island Wall, and finishing on a line 50 yards below Hamilton Cold Stores.

**Distance:** Three Statute Miles.

**Stations:** At the start No. 1 will be nearest to the North Bank.

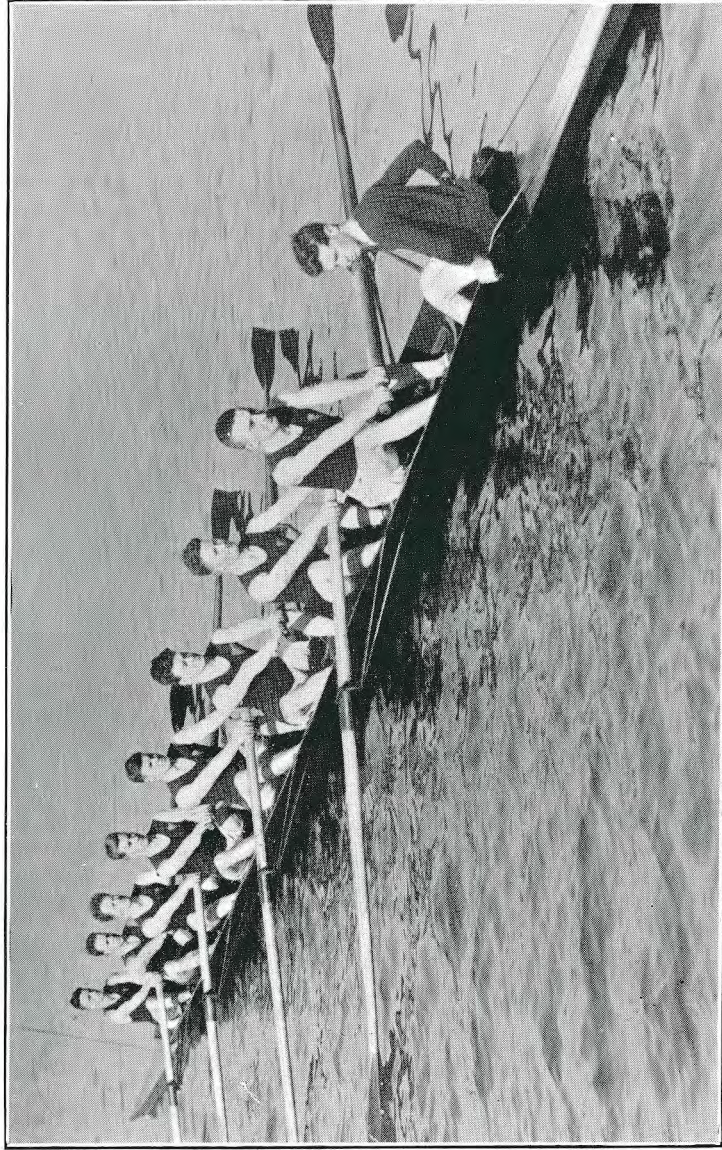
- Station No. 1—TASMANIA
- Station No. 2—QUEENSLAND
- Station No. 3—VICTORIA
- Station No. 4—SOUTH AUSTRALIA
- Station No. 5—NEW SOUTH WALES

First..... Second..... Third.....

Time.....

# TASMANIA

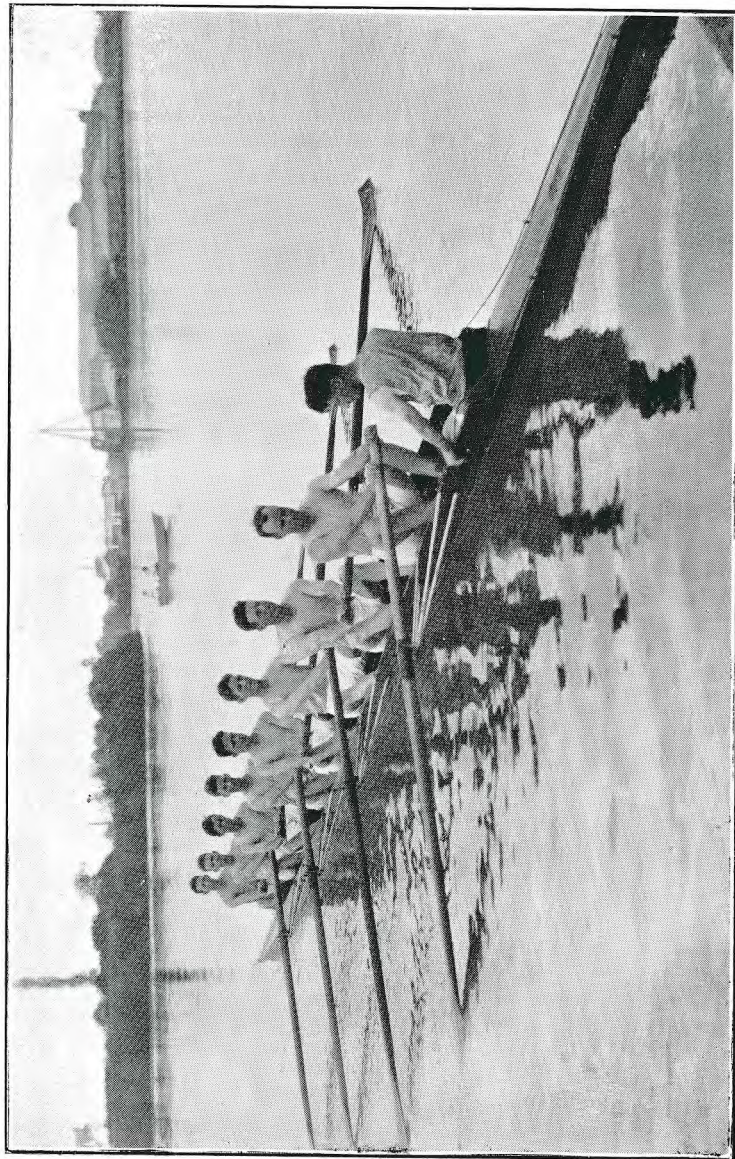
Colours: Myrtle Green Jerseys, Badge on Caps, Map of Tasmania in Primrose with Cross Oars in Rose.



E. Elrick ..	bow	11	6	G. Richardson ..	4	12	8	L. R. Smith ..	7	11	2
D. Haywood ..	2	12	6	J. A. Inglis ..	5	13	6	J. L. Hallam ..	stroke	12	1
W. Hull ..	3	11	12	A. Filbee ..	6	12	6	A. Griggs ..	cox	8	0
Emergency, H. Wilkinson,		11	10	Average Weight,	12 st. 2 lb.			Cox and Manager, C. L. McVilly.			

# QUEENSLAND

Colours: Maroon Jerseys, Maroon Caps with White Q on Cap.



H. G. Poole	..	bow	10	4	R. Couzens	..	4	10	13	S. McFarlane	..	7	11	3
E. G. Cook	..	2	11	5	H. Blackman	..	5	12	7	M. Raffin	..	stroke	11	9
R. Shaw	..	3	10	6	J. J. Poole	..	6	11	2	J. Hughes	..	cox	8	0
Emergency, D. Castles.					Average Weight,		11 st. 3 lb.			Coach, J. Copp.				



# VICTORIA

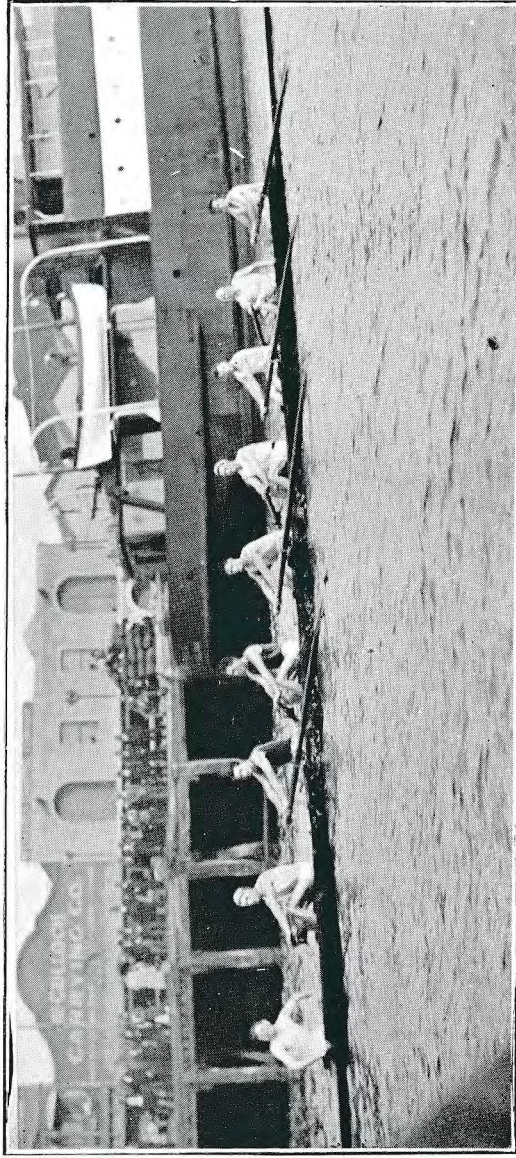
Colours: Dark Blue, White V on Cap.



W. A. Holtham ..	10	11	F. C. Bowman ..	4	12	3	R. V. Gregg ..	7	13	3
G. J. Adam ..	12	2	W. L. Pincott ..	5	12	7	H. A. Schlecthing	stroke	10	12
L. A. J. Scully ..	13	3	E. J. Farrell ..	6	12	3	B. E. Coombes ..	cox	7	0
Emergency, J. L. Mounsey,	11	8	Average Weight, 12 st. 2 lb.			Manager, J. P. Rortke.		Coach, C. Donald, E. Kenny.		

## SOUTH AUSTRALIA

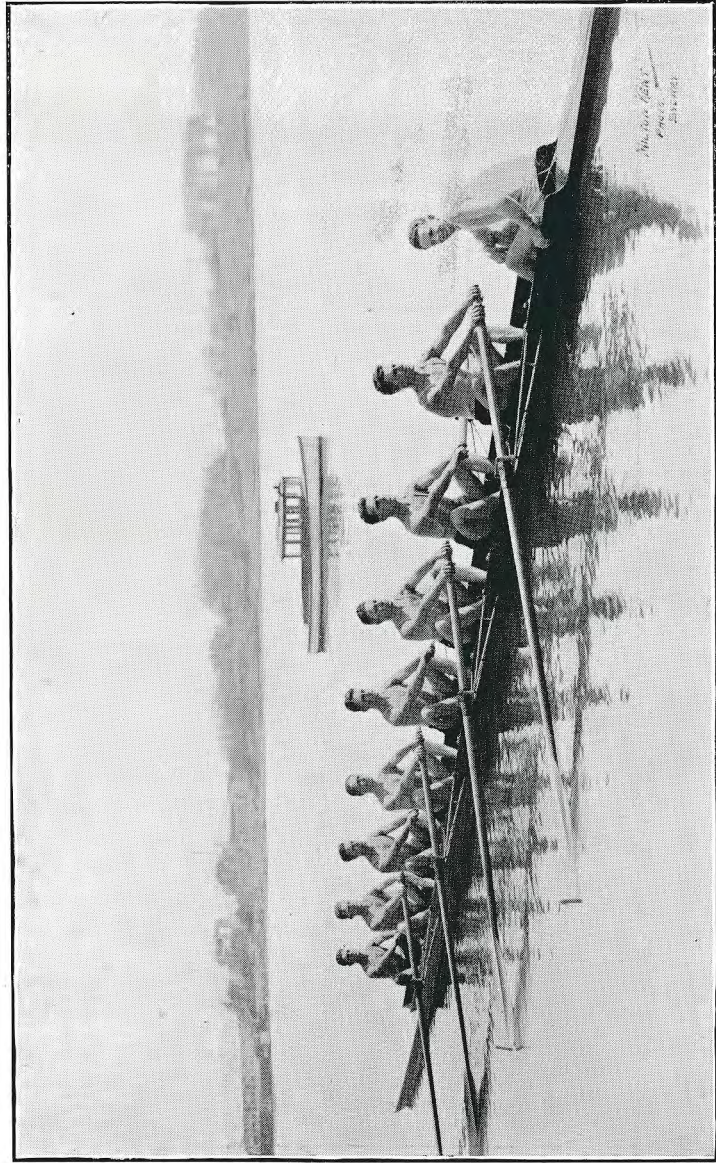
Colours: White Jerseys, Brown and Turquoise bands round neck and arms, Maltese Cross on breast,  
Brown Caps with Blue Monogram.



A. Pilmore ..	bow	10	8	A. V. Scott ..	4	13	0	A. Loxton ..	7	11	6
J. Guerin ..	2	10	3	D. Marshall ..	5	11	7	W. H. Pfeiffer ..	stroke	11	3
H. W. Doecke ..	3	12	0	L. Stone ..	6	12	2	R. A. Cummings ..	cox	9	0
Emergency, C. F. Kretschmer. Average Weight, 11 st. 7 lb. Manager, J. P. Marcus. Coach, E. Higgs.											

# NEW SOUTH WALES

Colours: Light Blue and Waratah on left breast.



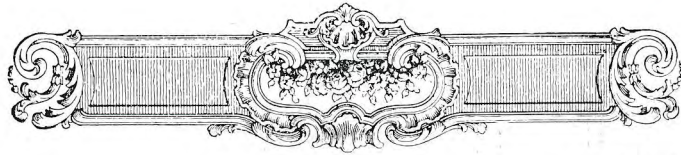
G. S. Wallis	..	bow	11	0	G. E. Phillips	..	4	13	0	C. W. Hurley	..	7	12	0
J. T. Vindin	..	2	12	3	J. Lowry	..	5	13	2	W. E. Livingston	..	stroke	11	7
P. G. Dowling	..	3	12	0	W. H. Ridley	..	6	13	0	R. J. Daly	..	cox	8	0
Emergency, O. R. Dowling, 11 12 Average Weight, 12 st. 3 lb. Coach, S. S. Amess. Manager, E. J. Buckley.														

AUSTRALIAN EIGHT OAR & SCULLING CHAMPIONSHIPS, 1926

Record of Interstate Races  
Fights

Year.	Won by	Other Competitors.	Rowed at	Time. m. s.
1878	Victoria	New South Wales	Melbourne	20 6
1879	N.S.W.	Victoria	Sydney	26 45
1880	Victoria	New South Wales	Melbourne	18 12
1881	Victoria	New South Wales	Melbourne	20 47
1882	N.S.W.	Victoria	Sydney	18 12
1883	Victoria	New South Wales	Melbourne	18 10
1884	Victoria	New South Wales	Melbourne	19 28
1885	N.S.W.	Victoria and Q.	Sydney	18 42 <sup>3</sup> / <sub>4</sub>
1887	Victoria	New South Wales	Sydney	17 46
1887	Victoria	New South Wales	Melbourne	17 46
1888	Victoria	New South Wales	Sydney	16 16
1888	Victoria	New South Wales	Melbourne	17 30
1889	Victoria	New South Wales	Sydney	18 45
1890	Victoria	Queensland and N.S.W.	Sydney	18 45 <sup>3</sup> / <sub>4</sub>
1891	Qland	N.S.W. and Victoria	Melbourne	17 10
1892	Victoria	N.S.W. and Queensland	Brisbane	16 16
1893	N.S.W.	Victoria and Queensland	Sydney	19 23
1894	Victoria	N.S.W. and Queensland	Melbourne	16 24
1895	Victoria	N.S.W. and Queensland	Brisbane	16 24
1896	Victoria	N.S.W. and Queensland	Sydney	17 17
1897	Victoria	W.A. and Queensland	Melbourne	17 10
1898	Victoria	Queensland	Brisbane	16 1
1899	Victoria	N.S.W., S.A., Q.	Melbourne	14 52
1900	Victoria	N.S.W., Q., S.A.	Brisbane	15 50
1901	Victoria	S.A., Q., W.A., N.S.W.	Sydney	17 14
1902	Victoria	S.A., Q., W.A., N.S.W.	Adelaide	17 7
1903	Victoria	Q., S.A., N.S.W., W.A.	Melbourne	14 27 <sup>3</sup> / <sub>4</sub>
1904	Victoria	S.A., Q., N.S.W., W.A.	Melbourne	17 17 <sup>3</sup> / <sub>4</sub>
1905	Victoria	T., N.S.W., W.A., S.A., Q.	Sydney	16 25
1906	Tasmania	Vic., N.S.W., W.A., S.A.	Perth	15 57
1907	Victoria	T., Q., N.S.W., W.A., S.A.	Adelaide	17 4
1908	N.S.W.	Vic., Tas., S.A., W.A., Q.	Melbourne	14 24 <sup>3</sup> / <sub>4</sub>
1909	Tasmania	Vic., N.S.W., Q., S.A.	Brisbane	16 2
1910	N.S.W.	Vic., Tas., W.A., Q., S.A.	Brisbane	15 27
1911	N.S.W.	Vic., Tas., S.A., W.A., Q.	Sydney	17 24
1912	Victoria	Tas., S.A., N.S.W., W.A.	Perth	15 33
1913	Victoria	Tas., S.A., N.S.W., W.A.	Perth	17 1
1914	Tasmania	S.A., W.A., V., N.S.W., Q.	Melbourne	13 33
1920	S. Aust.	W.A., T., N.S.W., V., Q.	Brisbane	15 5
1921	S. Aust.	T., V., S.A., Q., N.S.W.	Launceston	14 37
1922	S. Aust.	V., W.A., T., N.S.W., Q.	Sydney	16 19
1923	S. Aust.	W.A., Vic., N.S.W., Tas.	Perth	17 31
1924	Qland	N.S.W., S.A., W.A., T., V.	Adelaide	18 11 <sup>3</sup> / <sub>8</sub>
1925	W. Aust.	N.S.W., S.A., Q., T., V.	Melbourne	17 0 <sup>3</sup> / <sub>8</sub>

†Two races were rowed in 1888—in April and November.  
\*Victoria, New South Wales and Queensland did not finish owing to accidents.  
‡Distance, 2½ miles.



# NOTICE TO COMPETITORS

**COMPETITORS must be at their  
Starting Points at the  
time fixed**



**S**IGNALS to start and Finish shall be by GUNFIRE. The Starter shall tell the Crews this method of Starting. If an oar shall break during the first half-minute's rowing, the race shall be re-started from the original start. **TWO GUNSHOTS** from the Umpire's Launch shall be the signal for the Crews to **STOP ROWING** and return to Starting Line. Crews must start and finish between **NORTHERN BANK OF RIVER** and **MOORED BUOYS**.

The following Distinguishing Flags will be hoisted on the "Otter" to denote the winners:—

QUEENSLAND—RED  
NEW SOUTH WALES—WHITE  
VICTORIA—BLACK  
SOUTH AUSTRALIA—YELLOW  
TASMANIA—GREEN AND GOLD